

STATE OF MISSISSIPPI
ANNUAL REPORT
OF THE STATE TREASURER



FOR THE YEAR ENDED
JUNE 30, 2011

OFFICE OF THE STATE TREASURER



TATE REEVES
STATE TREASURER

◆ STATE TREASURY MANAGEMENT STAFF ◆

LIZ WELCH – DEPUTY STATE TREASURER
MARJORIE FANNING – DIRECTOR – ACCOUNTING DIVISION
RICHARD MANNING – DIRECTOR – BOND & COLLATERAL DIVISION
KATHRYN STEWART – DIRECTOR – COLLEGE SAVINGS PLANS DIVISION
THOMAS BOUNDS – DIRECTOR – INFORMATION TECHNOLOGY DIVISION
BETSY McLEAN, CFA – DIRECTOR – INVESTMENT & CASH MANAGEMENT DIVISION
JOHN YOUNGER – DIRECTOR – UNCLAIMED PROPERTY DIVISION
RICHARD ROGERS – INTERNAL AUDITOR
SPECIAL THANKS TO JOE SULLIVAN

TABLE OF CONTENTS

Letter of Transmittal _____	1
Past Treasurers _____	3
Executive Summary _____	4
Treasurer’s Statutory Duties _____	6
Representation of the Executive Branch _____	7
Management of the State Treasurer’s Office _____	10
Financial Reports _____	20
Historical Information _____	21
Summary of General, Special, Education Enhancement & Clearing Funds _____	22
Schedule of Monthly Receipts & Disbursements _____	24
Schedule of General Fund Receipts _____	26
Schedule of General Fund Disbursements _____	30
Schedule of Special Fund Receipts _____	33
Schedule of Special Fund Disbursements _____	41
Schedule of Education Enhancement Funds Receipts _____	53
Schedule of Education Enhancement Funds Disbursements _____	54
Schedule of Clearing Funds Receipts and Disbursements _____	55
Funds Invested by the State Treasury & Interest Revenue _____	56
Bonded Indebtedness _____	69
Schedules of Debt Service _____	70
Treasury Department Organizational Chart _____	74
Notes to the Annual Report of the Treasurer _____	75



STATE OF MISSISSIPPI
TREASURY DEPARTMENT

TATE REEVES
STATE TREASURER

POST OFFICE BOX 138
JACKSON, MISSISSIPPI 39205
TELEPHONE (601) 359-3600

December 31, 2011

To the Honorable Haley Barbour, Governor of the State of Mississippi, Members of the Mississippi Legislature, and Citizens of Mississippi:

In compliance with Article 4, Section 115 of the Mississippi Constitution, I am honored to submit the Annual Report of the Treasurer for the fiscal year ended June 30, 2011. The report is a record of the commitment we share to fiscal integrity and responsible, progressive leadership.

I am privileged to serve the citizens of Mississippi as the 53rd State Treasurer. Mississippi has a reputation for conservative financial management that has been further enhanced by the State's commitment to fiscal prudence.

Accomplishments I would note as especially significant during fiscal year 2011 include:

- The Mississippi Treasury Department earned \$97 million on all state funds in FY 2011. Over the last ten years, the State Treasurer has earned approximately \$860 million in interest on state funds.
- The Mississippi Prepaid Affordable College Tuition (MPACT) program entered its fourteenth year. By the end of the fiscal year, MPACT had 29,768 Mississippi children enrolled in the program.
- The Mississippi Affordable College Savings program (MACS), which is a companion program to MPACT completed the fiscal year with 12,207 accounts.
- Our Unclaimed Property Division paid approximately \$7.4 million in claims to citizens of Mississippi during fiscal year 2011.
- During fiscal year 2011, Mississippi issued General Obligation Bonds of \$650,670,000 and General Obligation Notes of \$95,245,705.

- Mississippi maintained its healthy credit ratings from Moody's, Standard and Poor's, and Fitch this fiscal year with ratings (Aa2/AA/AA+).

We must continue to be judicious in regard to borrowing, yet willing to seize economic development opportunities when presented. With prudent fiscal policies coupled with active stewardship of our resources, I am confident that Mississippi will be prepared to seize the great economic opportunities that lie ahead.

Sincerely,

A handwritten signature in black ink that reads "Tate Reeves". The signature is written in a cursive style with a long horizontal flourish at the end.

Tate Reeves
State Treasurer

TREASURERS OF THE STATE OF MISSISSIPPI

(FROM THE ADMISSION OF THE STATE INTO THE UNION)

Samuel Brooks, Lawrence County	1817		W.J. Miller, Panola County	1904-1908
Peter Schuyler, Unknown County	1818-1821		George R. Edwards, Attala County	1908-1912
Samuel Wooldridge, Adams County	1821-1828		P.S. Stovall, Hinds County	1912-1916
James Phillips, Jr., Copiah County	1828-1836		J.P. Taylor, Montgomery County	1916-1920
Charles C. Mayson, Marion County	1836-1838		L.S. Rogers, Holmes County	1920
James Phillips, Copiah County	1838		W.M. Murry, Tippah County	1920-1924
J.A. Van Hoesen, Copiah County	1838-1839		Ben S. Lowry, Covington County	1924-1928
Silas Brown, Hinds County	1839		Webb Walley, Greene County	1928-1930
H. Craig, Hinds County	1839		Henry Clay Yawn, Lamar County	1930-1932
James G. Williams, Hinds County	1839		Lewis S. May, Rankin County	1932-1936
Joshua S. Curtis, Hinds County	1840-1841		Newton James, Hinds County	1936-1940
Richard S. Graves, Choctaw County	1841-1843		Lewis S. May, Rankin County	1940-1944
William Clark, Hinds County	1843-1847		Newton James, Hinds County	1944-1948
Richard Griffith, Hinds County	1847-1851		R.W. May, Hinds County	1948-1952
William Clark, Hinds County	1851-1854		Newton James, Hinds County	1952-1956
Shields L. Hussey, Adams & Claiborne Counties	1854-1860		Robert D. Morrow, Rankin County	1956-1960
M.D. Haynes, Yazoo County	1860-1865		Evelyn Gandy, Forrest County	1960-1964
W.B. Weaver, Yazoo County	1865		William F. Winter, Grenada County	1964-1968
John H. Echols, Hinds County	1865-1869		Evelyn Gandy, Forrest County	1968-1972
William H. Vassar, Monroe County	1869-1874		Brad Dye, Grenada County	1972-1976
G.H. Holland, Choctaw County	1875		Edwin Lloyd Pittman, Forrest County	1976-1980
William L. Hemingway, Carroll County	1875-1890		John L. Dale, George County	1980
J.J. Evans, Monroe County	1890-1896		Bill Cole, Hinds County	1980-1988
A.Q. May, Simpson County	1896-1900		Marshall Bennett, Hinds and Holmes Counties	1988-2003
J.R. Stowers, Lafayette County	1900-1901		Peyton D. Prospere, Hinds County	2003
G.W. Carlisle, Hinds County	1901-1902		Tate Reeves, Rankin County	2004-present
Thad B. Lampton, Pike County	1902-1904			

EXECUTIVE SUMMARY

Recovery from the Great Recession was an ongoing factor throughout Fiscal Year 2011. The state received its last installment of the ARRA stimulus funds as \$383 million was allocated to provide additional funding for essential state services throughout Mississippi State Government. Devastating tornadoes and historic flooding threatened Mississippi's economy throughout the fiscal year, but thanks to careful budgeting practices and sound fiscal policy, the general funds collected through June 30, 2011 was \$61.4 million above the sine die estimate. Lowering unemployment with job creation and providing adequate levels of funding for public education remain top priorities as Mississippi continues to weather a stagnate national economy.

The general fund ending cash balance was \$68,767,058. We ended the year with a balance in the Working Cash Stabilization Reserve Fund of \$191.5 million, after transfers authorized by the Governor and appropriations authorized by the Legislature to meet the budgetary needs of the state. Interest earnings for fiscal year 2011 totaled \$97 million, and at June 30, 2011, the Treasury had an invested balance of \$3.85 billion.

During fiscal year 2011, Mississippi issued General Obligation Bonds of \$650,670,000 and General Obligation Notes of \$95,245,705. These issuances represent Mississippi's commitment to improving the quality of life through transportation, education, the environment, economic development and tourism.

\$650,670,000 General Obligation Bonds – The Taxable Series 2010D were issued to provide funding for MDA Workforce Training; to provide funding for the Sustainable Energy Research Fund; to provide funding for the Mississippi Heritage History Fund; to provide funding for the ACE Fund; to provide funding for Railroad Lines and Bridges; to provide funding for Existing Industry Fund; to provide funding for Rural Impact; to provide funding for Small Municipalities; to provide funding for Small Business/Forestry Loan; to provide funding for the Mississippi Industry Incentive Financing Program; to provide funding for Toyota through the Mississippi Major Economic Impact Program; to provide funding for Farish Street Historic District; to provide funding for the Railroad Revitalization Program; and to provide funds to refinance the previously issued short term financing of the 2009B Note, the 2010A Note, the 2010B Note, and the 2010C Note. The Federally Taxable Recovery Zone Economic Development Bonds, Series 2010E were issued to provide funding for the Highway Bridge Program; to provide funding for Vision 21; and to provide funding for the Camp Shelby Access Road. The Federally Taxable Build America Bonds, Series 2010F were issued to provide funding for the Mississippi Children's Museum; to provide funding the Museum of Art; to provide funding for the Museum of Natural Science; to provide funding for Long Leaf Trace; to provide funding for the Ohr O'Keefe Museum; to provide funding for the Jackson Zoo; to provide funding for Institutes of Higher Learning and Community/Junior Colleges; to provide funding for the Bureau of Building Discretionary Fund; to provide funding for the State Crime Lab; to provide funding for various projects with the Bureau of Buildings; to provide funding for the State Aid Road Fund; to provide funding for Local System Bridge; to provide funding for Rural Fire Truck; to provide funding for State Tax Commission ITS Upgrade; to provide funding for Statewide Tourism Projects; to provide funding for Community Heritage Preservation; to provide funding for Local Government/Rural Water; to provide funding for Water Pollution Control; to provide funding for MBI – Lake Mary Project; to provide funding for Economic Development Highway (Hwy 9); to provide funding for Infinity Space Center; and to provide funds to refinance the previously issued short term financing of the 2009C Note and the Promissory Note.

\$95,245,705 General Obligation Notes – The Series 2010C Taxable Note was issued to provide interim financing for the Mississippi Heritage History Fund; to provide interim financing for the MBI – Development Infrastructure Program; to provide interim financing for the Mississippi Industry Incentive

Financing Program; to provide interim financing for Twin Creeks Technologies and Toyota under the Mississippi Major Economic Impact Program. The Series 2010C Taxable Note was subsequently rolled into long term debt with the issuance of the Taxable Series 2010D Bonds. A promissory note was issued to provide interim financing to ITS through the Bureau of Buildings and was subsequently rolled into long term debt with the issuance of the Series 2010F Bonds. The Series 2011A Note was issued to provide interim financing for State Aid Road and Local System Bridge.

Fiscal year 2011 marked the MPACT program's fourteenth full year of operation. By the end of the fiscal year, there were 29,768 Mississippi children registered in the MPACT program, assuring a college education for these participants. The MPACT fund had an invested balance of \$246 million at the end of the year. The MACS program was approved by the 2000 session of the Mississippi Legislature and launched during FY 2001. MACS is a companion program to MPACT under which families can save for books, room and board, graduate school and other costs of higher education not covered under MPACT. After ten years of operation by the end of the 2011 fiscal year, 12,207 MACS accounts had been opened with an invested balance of \$131.7 million. Both MPACT and MACS are overseen by a nine member board of directors from throughout the state and a panel of four legislative advisors.

The Mississippi Health Care Trust Fund (HCTF), established to provide a perpetual source of revenue for health care in our state, continues to grow. The HCTF ended FY 2011 with a balance of \$147,553,770 including a balance in its companion fund the Health Care Expendable Fund. This amount reflects direct payments and interest accumulated as a result of the State's Tobacco Litigation Settlement and monies appropriated by the Legislature for disbursement to various health care agencies.

I will continue to champion the causes of fiscal discipline, including prudent revenue projections and budget appropriations, lowering the debt burden on taxpayers, improving the overall wealth of the state and its citizens, and the importance of education to the future of this state through the MPACT and MACS programs. I urge all participants in state government to continue to work to position Mississippi to seize the opportunities afforded to the state and to work tirelessly for a better and brighter future for all our citizens.

TREASURER'S STATUTORY DUTIES

The elected office of the State Treasurer is created under Article 5, Section 134, of the Mississippi Constitution. The Mississippi Code details the fiduciary responsibilities of the Treasurer. These responsibilities include the issuance of state debt, responsibility for the timely payment of principal and interest on the State's bond and note obligations, and receiving, disbursing and investing state funds. Specifically, the State Treasurer's statutory duties are:

- to invest and account for general, special, clearing and special purpose investment funds as well as bond proceeds, according to specific legislated authorization and direction;
- to account for and invest trust funds in the custody of the Treasurer;
- to account for and disburse funds for scheduled payments on bonded indebtedness;
- to prepare all reports and maintain all records required by the Federal Tax Reform Act for calculating any required arbitrage rebate;
- to distribute proportionate tax revenues to counties, cities, and other taxing districts of the state;
- to monitor the cash position of all Treasury funds to insure that cash balances are invested immediately and sufficient cash balances are on hand to pay obligations as they become due;
- to provide a cash flow projection for the timing of receipts and disbursements;
- to identify and recommend to other state agencies the use of cash management techniques which speed collection and increase earnings on investment balances;
- to prepare semi-annual GAAP report packages on all funds managed by the Treasurer for inclusion in the Comprehensive Annual Financial Report prepared by the Department of Finance and Administration;
- to act as custodian of unclaimed property reported to the Treasurer and attempt to locate the rightful owners so that they may claim their property;
- to serve as Treasurer to the Mississippi Employment Security Commission;
- to insure that all state deposits in approved depository institutions are collateralized at 105% of the deposit balance according to statute;
- to serve as custodian for securities pledged to the state and its agencies;
- to annually approve and issue a commission to all financial institutions serving as depositories for state funds;
- to process and pay all warrants issued by the state in payment of its obligations;
- to administer the Mississippi Prepaid Affordable College Tuition (MPACT) Program and invest the corpus of the MPACT Trust Fund on behalf of the purchasers of state-guaranteed college tuition contracts; and
- to oversee the Mississippi Affordable College Savings (MACS) Program and monitor performance of the MACS Program Manager.

REPRESENTATION OF THE EXECUTIVE BRANCH

The State Treasurer also represents the Executive Branch on various boards and commissions. These entities work for the realization of many fundamental aspects of a quality life—from the development of essential infrastructure such as clean water and affordable housing, to the development of young minds for future economic contributions to the workplace. These authorities are:

THE STATE BOND COMMISSION

The State Bond Commission shares with the Legislature responsibility for the direction of Mississippi's capital investment and debt financing. The Commission is composed of the Governor, The Attorney General and the Treasurer. Under Bond Commission direction, issuances were made in fiscal year 2011 to foster economic development, strengthen the economy and create jobs through funding to finance education and preserve history—both now and for the future. These financings included the funding of improvements to transportation infrastructure; preservation of historic sites and ethnic heritage; assistance to communities in planning and development; and to advance technology and education.

THE COLLEGE SAVINGS PLANS OF MISSISSIPPI BOARD

The Treasurer serves as an *ex-officio* member of the College Savings Plans Board. This board is responsible for Mississippi's two college savings programs: MPACT and MACS. The Mississippi Prepaid Affordable College Tuition (MPACT) program began its fourteenth full year of operation at the beginning of fiscal year 2011, administered in the Treasury Department under the rules established by the board. During FY 2011 enrollment, approximately 1,185 Mississippi children were enrolled in this very important program. Total enrollment for the program had reached 29,768 by the end of FY 2011, with an invested balance of \$246 million. During fiscal year 2000 the Legislature approved the MACS (Mississippi Affordable College Savings) program as a complementary program to MPACT. During FY 2001 the board hired TIAA-CREF Tuition Financing, Inc., an affiliate of the Teachers Insurance and Annuity Association College Retirement Equity Fund (TIAA-CREF), to manage the MACS Program. The board also wrote program rules and approved investment plans for MACS. The MACS program opened for enrollment in March 2001. During FY 2011, the MACS program accounts reached a total enrollment of 12,207 children and had \$131.7 million in assets under management.

THE MISSISSIPPI HEALTH CARE TRUST FUND

The Treasurer serves as Chairman of the 13-member board of the Mississippi Health Care Trust Fund, established by the 1999 Mississippi Legislature. The board oversees the investments of the care funds of over \$147.6 million. The Mississippi Health Care Trust Fund submits a separate annual report as of June 30 each year.

THE STATE PRISON EMERGENCY CONSTRUCTION AND MANAGEMENT BOARD

The Treasurer serves with the Lieutenant Governor and the Attorney General on the State Prison Emergency Construction and Management Board (SPECM). Established by the Legislature in 1994, SPECM's directive was to double the capacity of the state's penal system over two years via construction of 2,116 new public prison beds and 2,000 beds in privately managed facilities. The efforts of SPECM, the Department of Corrections and local law enforcement officers are sending a clear message to the criminal elements in the state that Mississippi is serious about fighting crime and is determined to do whatever it takes in order to insure public safety for our citizens.

THE ECONOMIC DEVELOPMENT STRATEGIC PLANNING TASK FORCE

The Treasurer is a board member of this group comprised of leaders from the public and private sectors in the fields of business, health, education, labor, agriculture and government. Created by the Legislature in 1989, the purpose of the task force was to develop and implement a long-term strategic plan to revitalize the state economy and prepare Mississippi for competition in the global market. In its first year the Task Force completed an analysis of Mississippi's economic development potential entitled Seizing the Future: a Commitment to Competitiveness. The result of the first year of work by the new Task Force was: "Seizing the Future: On the Right Track," presented to the 1999 Mississippi Legislature with recommendations in the areas of Human Resources, Strategic Resources, Business Resources, Technology Resources, Social Resources, and Physical Resources.

THE PUBLIC EMPLOYEES' RETIREMENT SYSTEM

The Treasurer is a member of the Board of Trustees of the Public Employees' Retirement System (PERS), which oversees the administration and operation of the System, including the investment of all System funds according to legislated authority. There are over 163 thousand contributing members of the Retirement System, including employees of State agencies, public schools, State universities and Community or Junior Colleges, local governments, as well as other political subdivisions and juristic entities.

In absolute terms, the investment results for fiscal year 2011 produced a total fund return of 25.4%. The System has shown an annualized rate of return of 4.73% for the past 5 years. System net assets increased from \$17.1 billion to \$20.8 billion based on market value, through cash flow and investment performance. For the 2011 fiscal year, domestic and non-U.S. equities had returns of 34.4% and 30.7%, respectively, compared to the System benchmark returns of 32.4% for domestic equities and 30.3% for non-U.S. equities. PERS' debt securities returned 6.5% compared with a 3.9% return of the Barclays Capital Aggregate Bond Index. Real estate investments experienced returns of 21.1% for the year end as compared with the System's benchmarks which returned 34.9%, 20.5% and 16.7%. The total return of 25.4% compares with PERS' Total Fund Benchmark of 22.1%.

The Board of Trustees and staff continually evaluate the asset allocation of the investments of the System with preservation of principal being the primary goal. Maximizing investment results to meet the funding needs of the System in the coming decade is the challenge that PERS faces as we prepare for the future.

THE MISSISSIPPI BUSINESS FINANCE CORPORATION

The Treasurer is an ex-officio member of the Mississippi Business Finance Corporation (MBFC), a non-profit corporation with the mission of coordinating a variety of state resources in order to assist businesses in obtaining financing for establishing new facilities, in expanding existing businesses, and to position the state as an aggressive competitor in the global market. MBFC represents a cooperative effort between the public and private sectors to stimulate both commercial and industrial development and expansion by administering financing programs that provide competitive or below-market interest rates and tax incentives for qualified projects.

MBFC serves as a comprehensive financing source, allowing companies locating or expanding in Mississippi to review certain financing and incentive alternatives through the corporation. The board of directors of MBFC also serves as directors of the Mississippi Development Bank (MDB). MDB was created to issue bonds to make funds available to local governmental units at reduced rates and at more favorable terms to finance infrastructure improvements and for other public purposes. During fiscal year 2011, MBFC/MDB approved 77 projects while funding 53 projects totaling \$2,334,178,131 that created 2,934 jobs. Additionally, the Mississippi Business Finance Corporation retained 6,927 jobs during the fiscal year.

THE LICENSE TAG COMMISSION

The Commission is composed of the Governor, the Attorney General and the State Treasurer and is authorized to negotiate and contract for the purpose of license or number tags for the passenger and commercial vehicles in Mississippi. Every four years a new license tag design is selected.

THE HISTORIC PROPERTIES TRUST FUND ADVISORY COMMITTEE

The Treasurer is a member of the Historic Properties Trust Fund Advisory Committee. The Historic Properties Trust Fund was established by the Legislature in 1987 to promote private fundraising that will encourage the preservation, restoration and development of significant historic sites around the state. During fiscal year 1999 the Legislature approved the Mississippi Landmark Grant Program, establishing the Mississippi Historic Properties Trust Fund within the State Treasury. Initial funding for the trust was \$10 million set aside from the Unclaimed Property Fund. The interest and income generated by investing this money is transferred quarterly to the Mississippi Landmark Grant Program to be used by the Department of Archives and History for the purpose of acquiring, preserving, restoring, supporting, operating and administering Mississippi Landmark properties or for specific historical projects. Additional funds come from donations, bequests, gifts and grants. Boards of Supervisors of counties and governing authorities of municipalities may make contributions to the program for use on specific properties.

THE MISSISSIPPI TORT CLAIMS BOARD

The Treasurer serves as a member of the Tort Claims Board, which administers the State Tort Claims Fund. The Legislature created this fund to pay claims arising from the abolishment of sovereign immunity of governmental agencies effective July 1, 1993. The sovereign immunity from torts previously enjoyed by State Government has been waived to the extent of \$50,000 for torts occurring before July 1, 1997; \$250,000 from July 1, 1997 to July 1, 2001; and \$500,000 after July 1, 2001. The board also approves all state and local government pools and coverage plans.

MANAGEMENT OF THE STATE TREASURER'S OFFICE

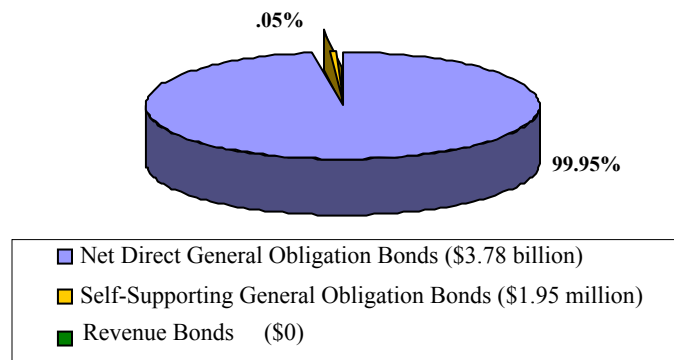
BOND AND COLLATERAL DIVISION

The Bond and Collateral Division is responsible for the management of general obligation and revenue bonds issued by the State Bond Commission. General obligation bonds consist of (1) net direct general obligation bonds and (2) self-supporting bonds with specific revenue pledges. Managing the state's debt requires timely disbursement of funds to paying agent banks for scheduled principal and interest payments. The bond division also handles the registrar/paying agent duties for several outstanding bond issues. This division oversees the registration of the outstanding bearer bonds as to principal only. Historical information regarding each issue is maintained by the Bond and Collateral Division. As of June 30, 2011, the Bond and Collateral Division serviced \$3,780,490,000 of outstanding principal on state bond issues. **Table I** provides the outstanding principal on all state bond issues as of fiscal year-end 2011. **Graph I** illustrates the issue type distribution of outstanding state bond issues.

Table I
Outstanding Principal on State Bond Issues

Issue Type	Amount
Net Direct General Obligation Bonds	\$3,778,535,000
Self-Supporting General Obligation Bonds	\$1,955,000
Total General Obligation Bonds	\$3,780,490,000
Revenue Bonds	\$0
TOTAL BONDED INDEBTEDNESS	\$3,780,490,000
<i>As of June 30, 2011</i>	

Graph I
Issue Type Distribution of Outstanding State Bond Issues



Net Direct General Obligation Bonds [\$3,778,535,000 (99.95%)] - Bonded debt payable only by appropriation from the General Fund or by specific sources of revenue which would otherwise accrue to the General Fund except for servicing of such debt. These obligations are secured by the full faith and credit of the state.

Self-Supporting General Obligation Bonds with Specific Revenue Pledges [\$1,955,000 (.05%)] - Bonded debt payable from user-fee revenues, specific project revenues and certain other special fund receipts. These obligations are backed by the full faith and credit of the state.

Total General Obligation Bonds [\$3,780,490,000 (100%)] - Bonded debt of the state to which the full faith and credit of the state is pledged. (Total of net direct general obligation bonds and self-supporting general obligation bonds with specific revenue pledges)

Revenue Bonds [\$0 (0%)] - Bonded debt payable solely from a specific revenue pledge derived from operating the facilities acquired. The full faith and credit of the state is not pledged.

Total Bonded Indebtedness [\$3,780,490,000 (100%)] - All bonded debt of the state, both general obligation and revenue bonds.

The Bond and Collateral Division also monitor the investment earnings on the gross proceeds of all federally tax-exempt state bond issues. U.S. Treasury regulations limit the yield at which proceeds on bond issues can be invested. These excess earnings are realized when bonds are sold at tax-exempt interest rates and the proceeds are then invested in securities that earn higher taxable yields.

The Bond Division is also required to maintain an inventory of collateral pledged by state depositories to secure public funds for all governmental entities. The collateral is segregated by depository and the par and market values of these securities are recorded and monitored according to changing market conditions. As of June 30, 2011, the market value of these securities exceeded \$7 billion. In addition, the Bond Division is a safekeeping facility for state agencies, which hold securities for retention, bonding and other performance guaranty purposes.

- NEW BOND ISSUES -

During fiscal year 2011, Mississippi issued General Obligation Bonds of \$650,670,000 and General Obligation Notes of \$95,245,705. These issuances represent Mississippi's commitment to improving the quality of life through transportation, education, the environment, economic development and tourism.

\$650,670,000 General Obligation Bonds – The Taxable Series 2010D were issued to provide funding for MDA Workforce Training; to provide funding for the Sustainable Energy Research Fund; to provide funding for the Mississippi Heritage History Fund; to provide funding for the ACE Fund; to provide funding for Railroad Lines and Bridges; to provide funding for Existing Industry Fund; to provide funding for Rural Impact; to provide funding for Small Municipalities; to provide funding for Small Business/Forestry Loan; to provide funding for the Mississippi Industry Incentive Financing Program; to provide funding for Toyota through the Mississippi Major Economic Impact Program; to provide funding for Farish Street Historic District; to provide funding for the Railroad Revitalization Program; and to provide funds to refinance the previously issued short term financing of the 2009B Note, the 2010A Note, the 2010B Note, and the 2010C Note. The Federally Taxable Recovery Zone Economic Development Bonds, Series 2010E were issued to provide funding for the Highway Bridge Program; to provide funding for Vision 21; and to provide funding for the Camp Shelby Access Road. The Federally Taxable Build America Bonds, Series 2010F were issued to provide funding for the Mississippi Children's Museum; to provide funding the Museum of Art; to provide funding for the Museum of Natural Science; to provide funding for Long Leaf Trace; to provide funding for the Ohr O'Keefe Museum; to provide funding for the Jackson Zoo; to provide funding for Institutes of Higher Learning and Community/Junior Colleges; to provide funding for the Bureau of Building Discretionary Fund; to provide funding for the State Crime Lab; to provide funding for various projects with the Bureau of Buildings; to provide funding for the State Aid Road Fund; to provide funding for Local System Bridge; to provide funding for Rural Fire Truck; to provide funding for State Tax Commission ITS Upgrade; to provide funding for Statewide Tourism Projects; to provide funding for Community Heritage Preservation; to provide funding for Local

Government/Rural Water; to provide funding for Water Pollution Control; to provide funding for MBI – Lake Mary Project; to provide funding for Economic Development Highway (Hwy 9); to provide funding for Infinity Space Center; and to provide funds to refinance the previously issued short term financing of the 2009C Note and the Promissory Note.

\$95,245,705 General Obligation Notes – The Series 2010C Taxable Note was issued to provide interim financing for the Mississippi Heritage History Fund; to provide interim financing for the MBI – Development Infrastructure Program; to provide interim financing for the Mississippi Industry Incentive Financing Program; to provide interim financing for Twin Creeks Technologies and Toyota under the Mississippi Major Economic Impact Program. The Series 2010C Taxable Note was subsequently rolled into long term debt with the issuance of the Taxable Series 2010D Bonds. A promissory note was issued to provide interim financing to ITS through the Bureau of Buildings and was subsequently rolled into long term debt with the issuance of the Series 2010F Bonds. The Series 2011A Note was issued to provide interim financing for State Aid Road and Local System Bridge.

Table II illustrates the historical bonded indebtedness of the state in dollars, and **Table III** provides a percent distribution.

**Table II
Historical Bonded Indebtedness**

Type of Debt	Amount (in millions)				
	2007	2008	2009	2010	2011
Net Direct General Obligation Bonds	3,158.20	3,409.86	3,422.84	3,485.98	3,778.54
Self- Supporting General Obligation Bonds	34.07	31.44	3.79	2.89	1.95
Total General Obligation Bonds	3,192.27	3,441.30	3,426.63	3,488.87	3,780.49
Revenue Bonds	47.88	24.46	0	0	0
TOTAL BONDED INDEBTEDNESS	3,240.15	3,465.76	3,426.63	3,488.87	3,780.49

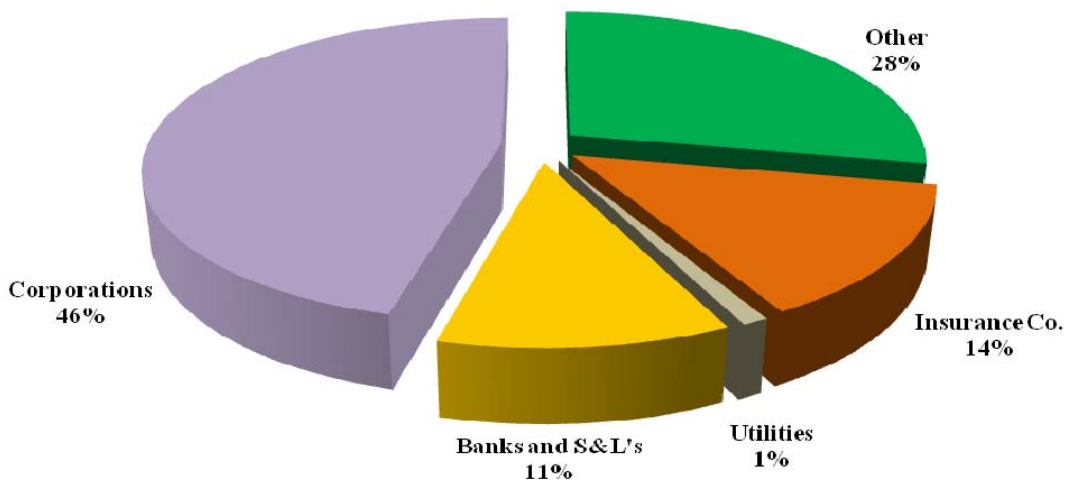
**Table III
Historical Bonded Indebtedness (Percent Distribution)**

Type of Debt	Percent of Total				
	2007	2008	2009	2010	2011
Net Direct General Obligation Bonds	97.47	98.39	99.89	99.92	99.95
Self- Supporting General Obligation Bonds	1.05	.91	.11	.08	.05
Total General Obligation Bonds	98.52	99.30	100.00	100.00	100.00
Revenue Bonds	1.48	.70	0	0	0
TOTAL BONDED INDEBTEDNESS	100.0	100.00	100.00	100.00	100.00

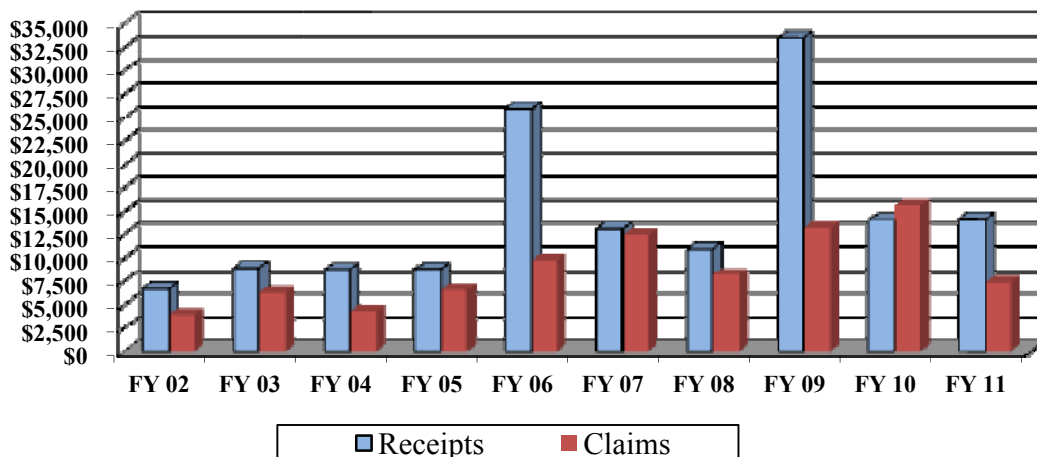
UNCLAIMED PROPERTY DIVISION

The State Treasurer is responsible for the administration of the Unclaimed Property Act. With the enactment of the law, funds that have been abandoned for a period of five years are reported and remitted to the Treasurer until the rightful owners are located. Every bank, savings and loan, insurance company, travelers' check company, utility, and business association having such funds is required to report them to the State Treasurer. Since 1982, approximately \$118.5 has been returned to the rightful owners. **Graph II** illustrates the sources of cash collections of Unclaimed Property funds for fiscal year 2011. **Graph III** provides historical receipts and claims for the system for the past eleven years.

Graph II
FY 2011 - Sources of Unclaimed Property



Graph III
Unclaimed Property Receipts & Claims
(in thousands)



FINANCE AND ACCOUNTING DIVISION

The Finance and Accounting Division is responsible for maintaining accounting records for approximately 80 Treasury Department treasury funds as set forth in the Mississippi Agency Accounting Policies and Procedures (MAAPP) manual. Reconciliations are prepared monthly to the Statewide Automated Accounting System (SAAS) for each of these treasury funds. GAAP (Generally Accepted Accounting Principles) financial statements are prepared at June 30 of each fiscal year for these treasury funds maintained by the Treasury Department. These GAAP financial statements are included in the Mississippi Comprehensive Annual Financial Report (CAFR) prepared by the Department of Finance and Administration at the end of each fiscal year June 30.

Other major responsibilities include the verification of the receipt of funds transmitted daily to the Treasury Department from the Department of Finance and Administration and the daily reconciliation of the cash balance in the State Treasury. The Finance and Accounting Division is also responsible for (1) the preparation of the Treasurer's Statement of Condition; (2) the development of the Treasurer's budget requests; (3) purchasing of office supplies and equipment; and, (4) the preparation of the monthly payroll. In cooperation with the Mississippi Tax Commission, the Finance and Accounting Division is responsible for disbursing certain tax diversions such as sales, gas severance, oil severance, timber severance and petroleum to the various counties and municipalities throughout the State. Schedules are maintained by this division detailing all tax diversions by treasury fund.

INFORMATION TECHNOLOGY (IT) DIVISION

The Information Technology Division supports all divisions of the agency and interfaces with other agencies and banks as required. The department supports the computer resources necessary to accomplish the mission of the Treasurer's Office. These resources include a Local Area Network (LAN), seventeen Windows 2008 servers, two dedicated UNIX servers running in a virtual environment, PCs in each division, and access to the state computer center. The mission critical information systems include the Portfolio Management System, the Unclaimed Property System, the Collateral/Securities System, the Mississippi Prepaid Affordable College Tuition System, and the Warrant Reconciliation and Daily Cash Balancing System. The effective use of office automation technology such as word processing, spreadsheets, E-mail and shared printers allows Treasury personnel to quickly and professionally respond to internal requests as well as communicate with the public.

COLLEGE SAVINGS DIVISION

The College Savings Division administers the Mississippi Prepaid Affordable College Tuition (MPACT) program and the Mississippi Affordable College Savings (MACS) program in an effort to assist Mississippi families with the growing burden of education expenses. Fiscal year 2011 marked the MPACT program's fourteenth full year of operation. By the end of the fiscal year, there were 29,768 Mississippi children registered in the MPACT program, assuring a college education for these participants. The MPACT fund had an invested balance of \$246 million at the end of the year.

The MACS program was approved by the 2000 session of the Mississippi Legislature and launched during FY 2001. MACS is a companion program to MPACT under which families can save for books, room and board, graduate school and other costs of higher education not covered under MPACT. After ten years of operation by the end of the 2011 fiscal year, 12,207 MACS accounts had been opened with an invested balance of \$131.7 million. Both MPACT and MACS are overseen by a nine-member board of directors from throughout the state and a panel of four legislative advisors.

INVESTMENT AND CASH MANAGEMENT DIVISION

The investment objectives of the Investments and Cash Management Division are safety, liquidity and return. On a monthly basis, the State Treasurer and the Executive Director of the Department of Finance and Administration (DFA) analyze the amount of cash in the General Fund and Special Funds of the state to determine the excess funds that are not needed for meeting the immediate requirements of the state. The excess cash is determined by a cash flow model provided by the State Treasurer. The cash flow model provides forecasts of revenues and expenditures for the fiscal year, and is used to analyze the amount of cash flow expected to be available for ongoing expenditures of the State.

The excess cash is invested by the Treasurer in securities prescribed in MISS. CODE ANN. §27-105-33. The securities in which state funds may be invested include certificates of deposit with qualified state depositories, repurchase agreements (fully secured by direct United States Treasury obligations, United States Government agency obligations, United States Government instrumentalities or United States Government sponsored enterprise obligations), direct United States Treasury obligations, United States Government agency obligations, United States Government instrumentalities or United States Government sponsored enterprise obligations and any open-end or closed-end management type investment company or investment trust registered under the provisions of 15 U.S.C. Section 80(a)-1 et. seq., provided that the portfolio is limited to direct obligations issued by the United States of America, United States government sponsored enterprise obligations and to repurchase agreements fully collateralized by the above-listed securities.

A qualified state depository is required to collateralize at least 105 percent of the amount of funds held on deposit that are in excess of the \$250,000 FDIC insurance limit (The traditional FDIC limit of \$100,000 was increased to \$250,000 on October 3, 2008 and has since been extended until December 31, 2013). State funds invested with qualified state depositories must earn an interest rate no less than that numerically equal to the bond equivalent yield on direct obligations of the United States Treasury of a comparable maturity, as determined by the State Treasurer.

The State Treasurer also invests the monies of the Mississippi Educational Improvement Trust Fund (EITF), the Working Cash Stabilization Reserve Fund (WCSRF), the Mississippi Health Care Trust Fund/Expendable Fund (HCTF/HCEF), the Mississippi Prepaid Affordable College Tuition Fund (MPACT), the Mississippi Worker's Compensation Fund, and the Tort Claims Fund. These funds are invested with outside money managers in an effort to increase the state's interest earnings on the funds through a diversified portfolio of either equity or fixed income instruments, depending on the fund in question. The EITF's income may be appropriated by the Mississippi Legislature for the exclusive purpose of the education of elementary and secondary school students and/or vocational training in the state. The WCSRF is the "rainy day" fund for the state and may be used to supplement the general fund when budget shortfalls are experienced. The HCTF's income may be appropriated by the Mississippi Legislature for health care purposes and is paid via the HCEF. The MPACT Fund is invested on behalf of participants in the MPACT program in an effort to generate growth and income to fund both current and future tuition payments for beneficiaries. In addition to the MPACT program, the Treasury oversees the administration of the Mississippi Affordable College Savings Program (MACS). **Tables IV through XI** detail the holdings of the various funds overseen by the Treasury¹.

¹Note that the General Fund investment portfolio holdings reflect the General Fund Investment Pool holdings of the General fund and special (Agency) funds of the state. The special fund investment holdings reflect balances of previously issued bond fund investments and money-market holdings of certain special-purpose funds. General Fund Investment Pool holdings of all special-purpose funds, including the EITF, the WCSRF, the HCTF and HCEF, the MPACT Fund, the WCT Fund, and the Tort Claims Fund, are reflected in the Cash/Cash Equivalent sector of their tables to more accurately report the balances of those funds.

SUMMARY OF STATE INVESTMENT HOLDINGS
Market Value as of June 30, 2011

Table IV	
General Fund Portfolio	
Demand Deposits	\$134,235,065
Interest-Bearing Deposits	\$577,900,000
Certificates of Deposit	\$163,328,000
Money Market Funds	\$62,800,000
U.S. Government Agencies	\$1,216,404,749
Fixed-Rate Mortgage-Backed Securities	\$417,144,149
Floating-Rate Mortgage-Backed Securities	\$733,924,897
Total Investment Portfolio	\$3,305,736,860
Special Fund Portfolio	
Interest-Bearing Demand Deposit Accounts	\$17,273,673
Total Investment Portfolio	\$17,273,673
Total General Fund/Special Fund Investments	\$3,323,010,533

Table V	
Mississippi Education Improvement Trust Fund	
Accrued Interest	\$292,431
Cash/Cash Equivalents	\$490,989
Fixed Income	\$46,289,317
Total Education Improvement Trust Fund	\$47,072,737

Table VI	
Mississippi Working Cash Stabilization Reserve Fund	
(Rainy Day Fund)	
Accrued Interest	\$110,194
Cash/Cash Equivalents	\$172,356,703
Fixed Income	\$19,921,447
Total Working Cash Stabilization Reserve Fund	\$192,388,344

Table VII	
Mississippi Health Care Trust Fund (HCTF)	
Accrued Interest	\$284,879
Cash & Cash Equivalents	\$13,792,698
Domestic Equities	\$95,138,937
International Equities	\$25,228,582
Real Estate (Timberland)	\$21,722,899
Total Health Care Trust Fund (HCTF)	\$156,167,995
Mississippi Health Care Expendable Fund (HCEF)	
Cash/Cash Equivalents	\$19,503,759
Total Health Care Expendable Fund (HCEF)	\$19,503,759
Total HCTF & HCEF	\$175,671,754

Table VIII	
Mississippi Prepaid Affordable College Tuition (MPACT) Fund	
Accrued Interest	\$846,070
Cash/Cash Equivalents	\$24,572,889
Fixed Income	\$57,774,732
Domestic Equities	\$141,236,259
International Equities	\$32,180,908
Real Estate (Timberland)	\$5,430,725
Total MPACT Fund	\$262,041,583

Table IX	
Mississippi Affordable College Savings Program (MACS)	
Assorted Mutual Funds	\$131,673,075
Total MACS Program	\$131,673,075

Table X	
Mississippi Workers' Compensation Fund	
Accrued Interest	\$151,167
Cash/Cash Equivalents	\$1,566,750
Fixed Income	\$23,261,891
Total Workers' Compensation Fund	\$24,979,808

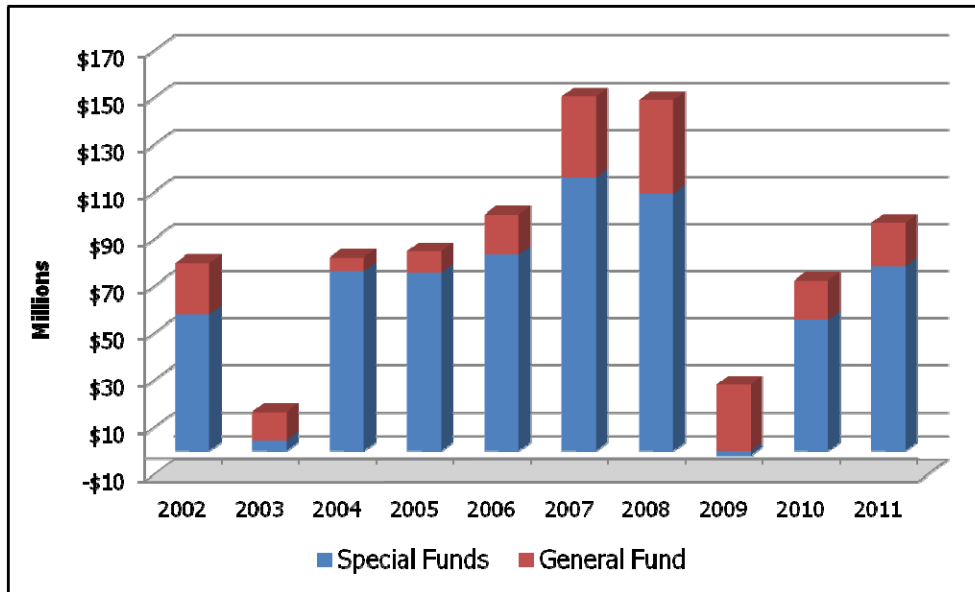
Table XI
Mississippi Tort Claims Fund

Accrued Interest	\$29,797
Cash/Cash Equivalents	\$5,042,583
Fixed Income	\$7,384,897
Total Tort Claims Fund	\$12,457,277

- INTEREST EARNINGS -

The Mississippi Treasury Department earned \$97 million on all state funds in FY 2011. Over the last ten years, the State Treasurer has earned approximately \$860 million in interest on state funds. **Graph I** illustrates the historical interest earnings on state funds as well as the distribution of those earnings between special funds and general funds. **Table XII** provides the underlying data on interest earnings.

**Graph I
State of Mississippi Interest Earnings**



**Table XII
Historical Interest Earnings**

FY	Special Funds	General Fund	Total Earnings
2002	\$58,110,764	\$21,775,800	\$79,886,564
2003	\$4,624,944	\$12,075,431	\$16,700,375
2004	\$76,460,471	\$5,847,512	\$82,307,983
2005	\$75,767,254	\$9,143,390	\$84,910,644
2006	\$83,397,123	\$17,113,213	\$100,510,336
2007	\$116,265,412	\$34,361,343	\$150,626,755
2008	\$109,509,010	\$39,535,010	\$149,044,020
2009	(\$1,940,622)	\$28,251,137	\$26,310,515
2010	\$55,726,634	\$16,702,716	\$72,429,350
2011	\$78,574,927	\$18,462,087	\$97,037,014
Total	\$656,495,917	\$203,267,639	\$859,763,556

◆ FINANCIAL REPORTS ◆

**STATE TREASURY
HISTORICAL INFORMATION
FOR THE YEARS ENDED JUNE 30**

FINANCIAL INFORMATION	2011	2010	2009	2008	2007
General Fund Net Cash Balance	\$ 152,721,301	\$ 101,041,160	\$ 19,125,065	\$ 90,393,335	\$ 477,560,856
Special Funds Net Cash Balance	\$ 2,913,426,195	\$ 2,450,787,624	\$ 2,547,678,824	\$ 2,544,813,411	\$ 1,835,538,063
Education Enhancement Funds Net Cash Balance	\$ 28,620,246	\$ 35,358,344	\$ 27,401,638	\$ 33,306,063	\$ 32,481,455
Clearing Funds Net Cash Balance	\$ 134,116,903	\$ 128,997,759	\$ 121,513,795	\$ 132,092,484	\$ 134,492,309
Total General, Special, Education Enhancement and Clearing Funds	\$ 3,228,884,645	\$ 2,716,184,887	\$ 2,715,719,322	\$ 2,800,605,293	\$ 2,480,072,683
Special Funds Investment Balances	\$ 568,149,845	\$ 616,834,256	\$ 605,405,969	\$ 722,470,676	\$ 1,023,422,968
BALANCE IN THE STATE TREASURY NET OF OUTSTANDING WARRANTS	\$ 3,797,034,490	\$ 3,333,019,143	\$ 3,321,125,291	\$ 3,523,075,969	\$ 3,503,495,651
Interest Revenue on General, Special, Education Enhancement & Clearing Funds	\$ 18,462,087	\$ 16,702,716	\$ 28,251,167	\$ 39,535,009	\$ 34,361,343
Interest Revenue on Special Funds Investment Balances	\$ 78,574,927	\$ 55,726,634	\$ (1,940,622)	\$ 109,509,010	\$ 116,265,412
TOTAL INTEREST REVENUE	\$ 97,037,014	\$ 72,429,350	\$ 26,310,545	\$ 149,044,019	\$ 150,626,755
BONDED INDEBTEDNESS					
General Obligation Bonds:					
Net Direct General Obligation Bonds	\$ 3,778,535,000	\$ 3,485,982,000	\$ 3,422,840,000	\$ 3,409,855,000	\$ 3,158,200,000
Self-Supporting General Obligation Bonds with Specific Revenue Pledges	\$ 1,955,000	\$ 2,885,000	\$ 3,790,000	\$ 31,435,000	\$ 34,070,000
Total General Obligation Bonds	\$ 3,780,490,000	\$ 3,488,876,000	\$ 3,426,630,000	\$ 3,441,290,000	\$ 3,192,270,000
Revenue Bonds	\$ -	\$ -	\$ -	\$ 24,460,000	\$ 47,880,000
TOTAL BONDED INDEBTEDNESS	\$ 3,780,490,000	\$ 3,488,876,000	\$ 3,426,630,000	\$ 3,465,750,000	\$ 3,240,150,000

**STATE TREASURY
SUMMARY OF GENERAL, SPECIAL, EDUCATION
ENHANCEMENT AND CLEARING FUNDS
FOR THE YEAR ENDED JUNE 30, 2011**

GENERAL FUND

Net Cash Balance at June 30, 2010	101,041,159
Add: Outstanding Warrants at June 30, 2010	12,945,382
Add: Prior Year Adjustments	(54,837,195)
Adjusted Cash Balance at July 1, 2010	59,149,346
Add: Receipts	4,850,822,634
Less: Disbursements	4,749,101,067
Cash Balance at June 30, 2011	160,870,913
Less: Outstanding Warrants at June 30, 2011	8,149,612
General Fund Net Cash Balance at June 30, 2011	152,721,301

SPECIAL FUNDS

Net Cash Balance at June 30, 2010	2,450,787,624
Add: Outstanding Warrants at June 30, 2010	107,039,785
Less: Prior Year Adjustments	(54,459,523)
Adjusted Cash Balance at July 1, 2010	2,612,286,932
Add: Receipts	13,646,827,080
Less: Disbursements	13,302,826,169
Cash Balance at June 30, 2011	2,956,287,843
Less: Outstanding Warrants at June 30, 2011	42,861,648
Special Funds Net Cash Balance at June 30, 2011	2,913,426,195

EDUCATION ENHANCEMENT FUNDS

Net Cash Balance at June 30, 2010	35,358,344
Add: Outstanding Warrants at June 30, 2010	50,912
Less: Prior Year Adjustments	(815)
Adjusted Cash Balance at July 1, 2010	35,410,071
Add: Receipts	269,835,997
Less: Disbursements	276,595,101
Cash Balance at June 30, 2011	28,650,967
Less: Outstanding Warrants at June 30, 2011	30,721
Education Enhancement Funds Net Cash Balance at June 30, 2011	28,620,246

CLEARING FUNDS

Net Cash Balance at June 30, 2010	128,997,759
Add: Outstanding Warrants at June 30, 2010	1,588
Adjusted Cash Balance at July 1, 2010	<u>128,999,347</u>
Add: Receipts	5,157,547
Less: Disbursements	34,011
Cash Balance at June 30, 2011	<u>134,122,883</u>
Less: Outstanding Warrants at June 30, 2011	<u>5,980</u>
Clearing Funds Net Cash Balance at June 30, 2011	<u><u>134,116,903</u></u>

RECAP OF ALL FUNDS

Net Cash Balance at June 30, 2010	2,716,184,886
Add: Outstanding Warrants at June 30, 2010	120,037,667
Add: Prior Year Adjustments	(376,857)
Adjusted Cash Balance at July 1, 2010	<u>2,835,845,696</u>
Add: Receipts	18,772,643,258
Less: Disbursements	18,328,556,348
Cash Balance at June 30, 2011	<u>3,279,932,606</u>
Less: Outstanding Warrants at June 30, 2011	<u>51,047,961</u>
General, Special, Education Enhancement & Clearing Funds Net Cash Balance at June 30, 2011	<u><u>3,228,884,645</u></u>

**STATE TREASURY
SCHEDULE OF MONTHLY RECEIPTS AND DISBURSEMENTS
FOR THE YEAR ENDED JUNE 30, 2011**

	MONTH ENDED	RECEIPTS	DISBURSEMENTS	BALANCE
GENERAL FUND	06/10			\$59,149,346
	07/10	244,076,564	204,840,481	98,385,430
	08/10	321,526,595	303,179,179	116,732,846
	09/10	399,331,253	417,009,622	99,054,477
	10/10	395,823,512	434,127,572	60,750,417
	11/10	600,852,104	459,233,143	202,369,378
	12/10	383,388,012	186,425,771	399,331,618
	01/11	323,139,343	547,830,430	174,640,531
	02/11	224,863,057	227,414,689	172,088,900
	03/11	459,308,464	388,245,240	243,152,124
	04/11	531,084,319	368,659,492	405,576,951
	05/11	369,832,335	559,464,988	215,944,298
	06/11	597,597,077	652,670,462	160,870,913
	TOTALS		4,850,822,634	4,749,101,067
SPECIAL FUNDS	06/10			\$2,612,286,932
	07/10	972,088,719	1,152,598,972	2,431,776,679
	08/10	993,888,047	1,094,314,055	2,331,350,671
	09/10	1,063,652,375	1,024,920,104	2,370,082,942
	10/10	962,114,466	978,131,820	2,354,065,588
	11/10	1,465,448,761	1,238,767,341	2,580,747,008
	12/10	1,345,941,122	1,511,910,535	2,414,777,595
	01/11	1,113,792,719	727,974,067	2,800,596,247
	02/11	1,076,148,073	1,207,468,643	2,669,275,677
	03/11	1,278,438,944	1,347,469,583	2,600,245,038
	04/11	882,748,285	1,014,813,391	2,468,179,931
	05/11	899,485,627	760,946,407	2,606,719,151
	06/11	1,593,079,944	1,243,511,253	2,956,287,843
TOTALS		13,646,827,080	13,302,826,169	

**STATE TREASURY
SCHEDULE OF MONTHLY RECEIPTS AND DISBURSEMENTS
FOR THE YEAR ENDED JUNE 30, 2011**

	MONTH ENDED	RECEIPTS	DISBURSEMENTS	BALANCE
EDUCATION	06/10			\$35,410,071
ENHANCEMENT	07/10	22,479,673	21,517,580	36,372,165
FUNDS	08/10	19,877,051	23,870,828	32,378,387
	09/10	20,533,062	23,915,046	28,996,402
	10/10	20,906,353	23,769,330	26,133,425
	11/10	20,266,004	23,783,645	22,615,784
	12/10	20,608,460	20,863,740	22,360,505
	01/11	24,562,103	20,303,710	26,618,898
	02/11	18,384,090	22,850,049	22,152,938
	03/11	21,762,625	18,609,404	25,306,158
	04/11	26,132,341	21,702,124	29,736,375
	05/11	26,651,172	28,149,176	28,238,371
	06/11	27,673,064	27,260,467	28,650,967
	TOTALS	\$269,835,997	\$276,595,101	
CLEARING	06/10			\$128,999,347
FUNDS	07/10	(17,345,271)	0	111,654,076
	08/10	7,710,368	484	119,363,960
	09/10	(1,639,086)	399	117,724,476
	10/10	1,089,439	500	118,813,415
	11/10	9,897,795	36	128,711,174
	12/10	6,988,832	20,490	135,679,516
	01/11	6,711,457	26	142,390,947
	02/11	(5,315,681)	1,188	137,074,078
	03/11	16,435,930	3,614	153,506,394
	04/11	(17,648,236)	544	135,857,614
	05/11	(1,566,954)	5,759	134,284,902
	06/11	(161,046)	973	134,122,883
	TOTALS	\$5,157,547	\$34,011	

**STATE TREASURY
SCHEDULE OF GENERAL FUND RECEIPTS
FOR THE YEAR ENDED JUNE 30, 2011**

TAXES

Tax Commission Taxes

40020	Beer & Wine Tax	30,749,767
40040	Corporation Income & Franchise Tax	447,978,594
40050	Gas Severance Tax - General Fund	13,336,941
40070	Income Tax-Regular	352,390,954
40080	Income Tax-Withheld - General Fund	1,030,345,269
40110	Installment Loan Tax	7,588,746
40120	Oil Severance Tax-General Fund	67,418,743
40150	Sales Tax	1,790,783,988
40230	Statewide Privilege Tax	701,648
40240	Timber Severance Tax	1,391
40270	Tobacco Tax	157,616,708
40280	Use (compensating) Tax	209,672,354
40300	Liquor Excise Tax	11,377,895
40310	Liquor Privilege Tax	2,833,375
40350	Railroad Track Mileage Tax	0
40380	Payment in Lieu of Taxes-Nuclear Plant	1,200,000

Insurance Department Taxes

40500	Insurance Premium Tax-General Fund	156,041,101
40530	Insurance Privilege Tax	5,621,322
40540	Insurance Premium Tax	13,880,887

Motor Vehicle Division of Tax Commission Taxes

40730	Penalty - Dyed Diesel Fuel Tax	4,750
40830	Auto Tag Fees	10,835,087
40840	Auto Title Revenue	0

Other Taxes

40920	Other Motor Fuels	1,036,261
-------	-------------------	-----------

TOTAL TAXES

4,311,415,781

GENERAL FUND FEES

Department of Agriculture & Commerce Fees

41010	Feed & Fertilizer Fees	803,991
41020	Seed & Grain Fees & Permits	149,716
41090	Other Licenses, Fees & Permits	79,529

Highway Public Safety Fees

41100	Drivers' Licenses	10,596,299
41101	Drivers' License Report Fees	6,134,782
41102	Drivers' License Reinstatement Fees	71,959
41120	Vehicle Inspection Fees	3,533,426
41140	Other Highway Safety Patrol Fees	0

Miscellaneous General Fund Fees

41350	Tax Commission Fees	7,777
41380	Gaming Fees	146,975,811

Other Special Funds Fees		
41780	City Owned Gas Utilities	0
41790	Utilities Fees	2,333
TOTAL GENERAL FUND FEES		168,355,623
REGULATORY & OTHER SPECIAL FUND FEES		
Other Special Fund Fees		
41990	Other Licenses, Fees & Permits	36,453
TOTAL REGULATORY & OTHER SPECIAL FUND FEES		36,453
FINES, FORFEITS & PENALTIES		
Forfeitures		
42210	Seized & Forfeited Property	14,209
Other Fines & Penalties		
42330	Penalites on Audit Recoveries	1,650
42350	Other Fines & Penalties	81,960
42440	General Fund - Implied Consent Fee	617,683
42450	General Fund - Game & Fish Fee	139,448
42460	General Fund - Other Misdemeanors Fee	2,441,126
42470	General Fund - Other Felonies Fee	344,576
42472	General Fund - Motor Vehicle Liability Insurance Fines	5,627,504
42480	Appearance Bond Fee	2,301,605
42600	ABC Liquor Permit Fines	2,000
TOTAL FINES, FORFEITS & PENALTIES		11,571,761
RENT & USE OF STATE PROPERTY		
Rent & Use of State Property		
43100	Rent of State Property	50,235
TOTAL RENT & USE OF STATE PROPERTY		50,235
INTEREST, DIVIDENDS & GAINS FROM SALE OF INVESTMENTS		
Interest, Dividends & Gains From Sale of Investments		
43300	Interest on Investments-General Fund	18,462,869
43370	Interest on Checking/Savings Accts	8,562
43390	Other Interest	329
TOTAL INTEREST, DIVIDENDS & GAINS FROM SALE OF INVESTMENTS		18,471,760
GRANTS		
Federal Grants-in-Aid		
44190	T.V.A. Payments in Lieu of Taxes	2,570,868
TOTAL GRANTS		2,570,868

DONATIONS

44500	Donations and Overpayments	905
-------	----------------------------	-----

TOTAL DONATIONS**905****REVENUE FROM CURRENT SERVICES**

Revenue from Current Services

45010	Sale of Supplies and Services - Outside of Agencies	37,235
45020	Sale of Supplies and Services - Between State Agencies	0
45030	Net Income - Sale of Alcoholic Beverages	49,020,527

TOTAL REVENUE FROM CURRENT SERVICES**49,057,762****COMPENSATION FROM SALE, LOSS OR DAMAGE TO PROPERTY**

Sales

46000	Sale of Real Estate	494,470
46010	Sale of Personal Property	14,251

Escheats & Awards

46110	Awards for Damages	29,700,000
-------	--------------------	------------

Insurance Adjustments and Settlements

46200	Insurance Adjustments and Settlements	9,938
-------	---------------------------------------	-------

TOTAL COMPENSATION FROM SALE, LOSS OR DAMAGE TO PROPERTY**30,218,659****TRANSFERS, REFUNDS & OTHER RECEIPTS**

Intra-Budget Transactions

49090	ABC Clearing - Miscellaneous Income	0
-------	-------------------------------------	---

Inter-Budget Transactions

49100	Unexpended Balances	7,688,220
49150	Transfers from Other Funds	2,423,396

Refunds

49300	Refunds of Prior Year Disbursements	205,746
49305	Five Year Cancelled Warrants	20,696
49310	Prior Year Cancelled Warrants	10,118
49340	Refunds from Cafeteria Plans	1,894
49370	Refunds from Utility Companies	16,068
49390	Other Refunds	135,413
49395	Prior Year Sub grant Refunds	22

Other Nongovernmental Receipts

49903	Garnishments	156
49925	Recovery Work Comp Related	21,463
49910	Other Nongovernmental Receipts	22
49970	Fulfillment Fee Receipts	6,045

Other Receipts (Balance Sheet Account)

10200	Petty Cash	5,282
11100	Accounts Receivable - Current	67
11950	Temporary Advance to Cafeteria Plan	15,105
21850	Funds Held for Others	0

21900 Cancelled Warrants Payable

(49,661)

Other Transfers & Refunds

248,572,775

TOTAL TRANSFERS, REFUNDS & OTHER RECEIPTS

259,072,827

TOTAL GENERAL FUND RECEIPTS

\$4,850,822,634

**STATE TREASURY
SCHEDULE OF GENERAL FUND DISBURSEMENTS
FOR THE YEAR ENDED JUNE 30, 2011**

2000	JOINT LEGISLATIVE OPERATIO	1,258,719
2001	SENATE CONTINGENT FU	4,031,074
2002	HOUSE CONTINGENT FU	4,987,696
2003	SENATE SAL MILEAGE & EXPEN	1,405,674
2004	HOUSE SAL MILEAGE & EXPEN	3,196,218
2005	SENATE INTERIM EXPEN	1,092,984
2006	INTERIM EXPENSE FU	2,533,370
2008	JOINT LEG COMM-COMP REV PUB	118,933
2021	LEGISLATIVE PEER COMMITT	1,927,870
2025	JOINT LEGISLATIVE BUDGET CO	2,531,619
2028	JOINT LEG REAPPORTIONMENT CO	513,725
2032	INTERSTATE COOPERATION CO	100,874
2051	SUPREME COU	6,772,389
2052	ADMINISTRATIVE OFFICE COUR	1,132,516
2053	SUPREME COURT TRIAL JUDG	15,437,810
2054	COURT OF APPEA	5,023,012
2055	SUPREME COURT-YTH COURT	1,954,062
2071	ATTORNEY GENERAL	9,213,863
2087	DIST ATTN Y SALARIES & TRAV	16,464,136
2089	DISTRICT ATTY OFFICE EXPEN	1,192,357
2095	ETHICS COMMISSION	576,976
2096	COMM JUDICIAL PERFORMANCE	307,650
2101	GOVERNOR'S OFFI	3,763,706
2102	GOVERNOR'S MANSI	595,578
2103	PUBLIC SAFETY PLANNI	226,364
2104	ENERGY COUNC	13,600
2106	GOV'S SOUTHERN STATES ERGY	12,357
2107	GOV'S SOUTHERN GRWTH POLICI	11,975
2130	DFA-FINANCIAL MANAGEME	10,320,315
2155	DEPT OF AUDIT	5,971,628
2171	TREASURER SUPPO	31,056
2181	TAX COMMISSI	48,193,886
2194	BOARD OF TAX APPEALS	430,352
2201	EDUCATION ADMINISTRATI	79,464,811
2204	EDUC CHICKASAW SCH INTERE	14,515,760
2206	EDUCATION VOC & TECHNIC	73,735,452
2217	SCHOOL FOR BLIND AND DE	10,818,555
2230	DEPT EDUC-ADEQUATE ED-GEN FUND	1,671,253,408
2231	DEPT EDUC-ADEQUATE ED-PER CAP	5,000,000
2245	LIBRARY COMMISSI	11,332,204
2247	EDUCATIONAL T.	5,607,665
2251	IHL-SYSTEM ADMINISTRATI	7,124,437
2252	IHL-SUB PROGRAM-GEN FUND	17,882,647
2255	IHL-GENERAL SUPPO	255,241,773
2257	IHL AYERS ENDOWMENT	5,000,000
225E	IHL-STUDENT FINANCIAL A	26,552,672
2268	IHL-AYERS SUMMER DEV PROGRAM	466,805
226B	IHL-COLLEGE VETERINARY MEDIC	14,379,200
2277	MS COMM VOLUNTEER SERVICE	407,940
2281	IHL-UMC MEDICAL CENT	180,567,223

2284	IHL-ASU AYERS RELATE PROG	4,391,109
2285	IHL-JSU AYERS RELATE PROG	8,853,157
2286	IHL-MSU AYERS RELATE PROG	4,197,777
2291	JUNIOR COLLEGES ADM OFFI	6,391,090
2298	COMMUNITY COLLEGE SUPPO	168,422,707
2301	DEPT OF HEALTH SUPPO	25,321,963
2328	MEDICAID DIVISI	255,037,217
2329	MEDICAID DIV-TRANS DIAL 08	2,393,458
2370	DEPT OF MENTAL HEALTH SERV P	24,087,747
2371	DEPT OF MENTAL HEALTH A	3,430,522
2372	EAST MS STATE HOSP MERIDI	38,881,616
2373	ELLISVILLE STATE SCHO	6,572,832
2374	MISSISSIPPI STATE HOSPIT	82,153,506
2382	BOSWELL REGIONAL CENTER	10,635,112
2384	NORTH MS STATE HOSPIT	6,830,147
2385	NORTH MS REGIONAL CENT	6,854,869
2386	HUDSPETH REGIONAL CENT	7,726,174
2387	SOUTH MS REGIONAL CENT	4,793,587
2389	CENTRAL MS RESIDENTIAL CENT	6,342,002
238D	NORTH MS ST HOSP-B-CC-08	136,547
238F	NORTH MS ST HOSP-C-CC 08	131,487
2391	SOUTH MS STATE HOSPIT	6,275,359
2392	JUVENILE REHAB FACIL-GENER	4,101,456
2393	JUVINILE TRI FAC-GENERAL	2,968,775
2398	MS STATE HOSP BROOKHAVEN	222,160
239E	SOUTH MS ST HOSP-SMSHCC-08	70,033
2401	AGRICULTURE & COMMERCE A	8,455,463
2411	MDA-GEN FUND SUPP	20,949,104
2421	AGRI EXTENSION & MARK	26,294,669
2422	AGR & FORESTRY EXPERIMENT ST	20,200,255
2423	ASU EXPERIMENT STATI	5,194,352
2428	BOARD OF ANIMAL HEAL	1,222,129
2431	FAIR COMM-ROUND	51,960
2432	FAIR COMM-LIVESTOCK PREMIU	23,509
2433	FAIR COMM-DIST LIVESTO	62,458
2434	FAIR COMM-CO LIVESTO	6,704
2437	FAIR COMM-DAIRY SHO	11,956
2438	FAIR COMM-HIGH SCHOOL ROD	17,509
2448	FOREST PRODUCT UTILIZATION L	5,139,849
2450	DEPARTMENT OF MARINE RESOURC	1,367,566
2451	FORESTY COMMISSI	17,408,730
2461	WFP PARKS & RECREATI	3,554,144
2464	WFP NATURAL SCIENCE MUSE	2,365,473
2471	NATURAL RESOURCES PAR	19,175,328
2472	GRAND GULF MILITARY MONUME	218,499
2475	DEPT OF ARCHIVES & HISTO	8,515,085
2483	TENN TOM WATERWAY DEV AU	128,796
2486	SOIL & WATER CONSERVATION CO	790,834
2487	MS RIVER PARKWAY CO	21,717
2551	CORRECTIONS INSTITUTI	153,429,471
2553	PAROLE BOA	741,379
2554	CORRECTIONS MEDICAL SERVIC	50,692,426
2555	DEPT CORRECT-PRIV PRISON	73,409,570
2556	DEPT CORRECT-REG FAC	31,020,172
2557	CORRECTIONS HOUSING COS	9,603,447

2651	DHS-SUPPORT	5,393,459
2653	HUMAN SERVICES SOCIAL SERVI	7,256,274
2659	AGING & ADULT SERVIC	33,118
2662	YOUTH SERVIC	19,172,245
2701	NATIONAL GUARD SUPPO	2,784,418
2705	MILITARY DEPT-ARMED FORCES MUS	602,670
2706	MS MILITARY DEPT-YCP 09	470,379
2708	NATL GUARD EDUC ASSISTAN	495,719
2711	DEPT OF PUB SAFETY HWY PATR	43,459,156
2713	PUBLIC SAFETY CRIME L	6,768,210
2714	PUBLIC SAFETY TRAINING ACADE	442,768
2715	PUBLIC SAFETY SUPPORT SERVIC	3,444,238
2716	DEPT OF PUB SAFETY SS TROOPER	188,685
2718	DEPT OF PUBL SAFETY NARCOTI	10,709,703
2721	EMERGENCY MANAGEMENT A	4,872,028
2725	EMERG MGT-DISASTER RELI	1,309,510
2731	VETERANS AFFAIRS BOA	4,984,786
2740	MEDICAL EXAMINE	377,433
2749	DPS JUV FACILITY MONITOR	73,921
2751	TAX COMM-HOMESTEAD EXEMPTI	75,109,371
2757	DPS-HOMELAND SECURITY	47,969
2806	TAX COMM-LICENSE TAG DI	428,155
2847	MS COMM ON STAT OF WOMEN	56,482
2865	ARTS COMMISSION	1,359,191
2951	GEN FD OBLIGATION BONDS & IN	714,167,608
2953	BANK SERV CHARGES ON BON	1,102,945
2989	ST TREAS-HEALTH CARE TRUST FUND	549
2999	PERMANENTLY OPEN ST GEN FUND	166,000,218
TOTAL GENERAL FUND DISBURSEMENTS		\$4,749,101,067

**STATE TREASURY
SCHEDULE OF SPECIAL FUNDS RECEIPTS
FOR THE YEAR ENDED JUNE 30, 2011**

TAXES

Tax Commission Taxes

40020	Beer and Wine Tax	0
40060	Gas Severance Tax (to counties) - Special Fund	6,781,540
40065	Petroleum International Fuel Tax	8,391,166
40090	Income Tax Withheld (refund account) - Special Fund	447,079,188
40130	Oil Severance Tax (to counties) - Special Fund	15,168,450
40140	Sales Tax, Casual Auto	9,435,581
40145	Sales Tax, Rental Vehicles	5,969,397
40150	Sales Tax	179,047,777
40170	Sales Tax (Boll Weevil Management)	215,134
40180	Sales Tax, Public School Bldg	19,999,992
40190	Sales Tax, Municipalities	350,272,582
40200	Sales Tax, MDOT	12,122,711
40205	Sales Tax Airport Parking	768,767
40215	Sales Tax (interstate telecommunications)	10,902,911
40250	Timber Severance Tax (to counties)	658,391
40260	Timber Severance Tax (to Forestry Commission)	2,627,676
40280	Use (compensating) Tax	30,062,797
40290	Special County and/or Municipal Tax	57,038,321
40330	Dept Mental Health - Alcohol/Drug Abuse	6,027,115
40340	Rail Car in Lieu of Tax	4,465,982
40350	Railroad Track Mileage Tax	199,299
40375	Occupancy Tax	850,821
40380	Payment in Lieu of Taxes Nuclear Plant	18,800,000
40395	Withholding Tax	14,841,540

Bureau of Financial Control Taxes

40440	Forest Acreage Tax	1,387,045
-------	--------------------	-----------

Insurance Department Taxes

40510	Insurance Premium Tax - Municipalities	7,899,494
40520	Insurance Premium Tax - County Fire Protect	7,670,718
40530	Insurance Premium Tax	50,050
40540	Insurance Premium Tax	0

Motor Vehicle Division of Tax Commission Taxes

40610	Gasoline Tax - MDOT 9/14 Road Protection	72,312,956
40630	Gasoline Tax - Municipalities	1,547,295
40640	Gasoline Tax - Counties	49,019,724
40650	Gasoline Tax - Aeronautics Comm	1,774,606
40660	Gasoline Tax - Boat/Water Safety	8,800,000
40670	Gasoline Tax - One - Cent Tax (MDOT)	16,031,344
40680	Gasoline Top 20% Tax (MDOT)	34,507,911
40690	Gasoline Tax - Additional One - Cent Tax	16,031,344
40710	Liquefied Compressed Gas	402,710
40720	Motor Fuels Tax 2% - 10%	8,889,785
40750	Lubricating Oil Tax (MDOT)	952,061
40770	Truck & Bus Privilege Apportionment	1,052,210
40780	Truck & Bus Privilege Tax (counties)	24,638,785
40800	Truck & Bus Privilege Tax (MDOT)	48,026,803

40820	Distinctive License Tag Fee	5,124,653
40825	Trauma Care System License Tag Fee	10,205,172
40830	Auto Tag Fees	16,624,990
40840	Auto Title Revenue	8,979,122

Other Taxes

40870	911 Minimum Stnd Telephone Svc Chrg	5,115,184
40900	Gasoline Tax (six, two, one cent)	52,378,515
40920	Other Motor Fuels	140,105,777
40930	Motor Fuels Tax 5%	8,626,978
40950	Hazardous Waste Mgmt Tax	310,367
40960	Nonhazardous Waste Mgmt Fee	4,140,267
40970	Waste Tire Fee	2,144,686

TOTAL TAXES

1,756,477,690

GENERAL FUND FEES

Department of Agriculture & Commerce Fees

41010	Feed and Fertilizer Fees	0
41020	Seed and Grain Fees & Permits	0
41030	Meat Licenses, Fees & Permits	320
41090	Other Licenses, Fees & Permits	128,244

Highway Public Safety Fees

41100	Drivers' Licenses	7,468,516
41101	Drivers' License Report Fees	7,424,678
41120	Vehicle Inspection Fees	268,377
41125	CDL Tester Registration	3,700
41130	Safety Responsibility Fees	0
41135	Law Enforcement Accreditation	1,200
41140	Other Hwy Safety Patrol Fees	581,026
41145	Fingerprint Processing Fees	1,643,212
41146	CIC Processing Fees	1,518,143

Insurance Department & Insurance Commission Fees

41150	Insurance Comm Assessments	1,499,249
41170	Fire Marshall Fees - Fire Fighter's School Fund	4,101,250
41180	Mobile Home Inspection Fees	117,325
41190	Other Insurance Dept Fees	13,574,654

Secretary of State Fees

41210	Scrap Metal Dealers Fees	731,146
41220	Charities Fees	393,889
41225	Securities Fees	14,684,650
41230	Corporation Fees	4,174,087
41235	Uniform Commercial Code Fees	3,030,087
41240	Sec of State - Miscellaneous Fees	343,317
41245	Pre - Need Funeral Registration Fees	76,882
41250	Sec of State - Land Division Fees	13,834
41260	Sec of State - Sale of Tax Forfeited Land Fees	664,909
41265	Voter Roll Fees	16,150

Miscellaneous General Fund Fees

41280	Div of Plant Industry Fees	2,132,980
41340	Clerk of Supreme Court Fees	175,481
41341	State Law Library Fees	1,093

41380	Gaming Fees	142,298,446
41390	Other General Fund Fees	6,545

TOTAL GENERAL FUND FEES **207,073,390**

REGULATORY & OTHER SPECIAL FUND FEES

Professional & Vocational Fees

41400	Banking Dept - Admin Fees	4,043,958
41401	Banking Dept - Consumer Finance Fees	2,791,837
41410	Bd of Public Accountancy Fees	577,942
41412	Bd of Public Contractors Fees	1,979,889
41414	Oil & Gas Board Fees	4,409,547
41415	Bd of Architecture Fees	79,155
41416	Bd of Nursing Fees	5,145,601
41417	Bd of Pharmacy Fees	1,389,950
41418	Bd of Medical Licensure Fees	2,459,461
41419	Bd of Medical Licensure Acupuncture	2,250
41440	Real Estate Commission Fees	1,115,211
41450	Dental Examination Fees	729,279
41460	Forestry Comm - Miscellaneous Fees	61,916
41470	Motor Vehicle Comm Fees	395,617
41480	Bd of Bar Admission Fees	361,266
41481	Continuing Legal Education Fees	119,573
41482	Certified Court Reporter Fees	21,690

Recreational Fees

41500	DWFP - Fees & Permits	896,237
41510	DWFP - License Sales	15,479,878
41511	Marine Resources License Sales	414,892
41520	DWFP-Lake Sales	431,715
41530	DWFP-Boat Registration	914,393
41540	DWFP-Park User Fees	7,965,572
41541	DWFP - Gross Golf Revenue	736,870
41545	DWFP - Museum Fees	432,384
41546	DWFP - Shooting Range Fees	2,558
41550	DWFP - Timber Sales (escrow fund)	0
41552	DWFP - "MS Outdoors"	68,056

Assessment Fees

41620	Bureau of Marine Resources - Seafood Fees	79,563
41630	Soybean Promotion Fees	3,716,728
41640	Rice Promotion Fees	1,265,697
41650	Peanut Promotion Fees	62,664
41660	Surface Mining Permit Fees	300,475
41670	Air Operating Permit Fees	4,459,244
41680	Corn Production Fees	778,906

Other Special Fund Fees

41705	Utility System Restoration Fees	22,995,103
41710	State Port Licenses, Fees & Permits	88,688
41720	Motor Carrier Regulatory Fees	4,248,767
41730	OSA - Audit Fees - Counties	1,240,419
41731	OSA - Audit Fees - School Districts	335,426
41732	OSA - Audit Fees - Community Colleges	5,756
41733	OSA - Audit Fees - Universities	9,217
41734	OSA - Audit Fees - Other	3,321

41735	OSA - Audit Fees - Property	167,378
41736	OSA - Audit Fees - Performance	190,620
41740	Bd of Health - Vital Statistics Registrars	3,317,792
41750	Patient Support Cont.	26,674,454
41760	Medicaid Providers Assessment	93,527,422
41765	Medicaid Hospital Assessment	205,492,359
41767	Hospital Gross Revenue Assessment	34,943
41770	Conference Registration Fees	37,319
41780	City Owned Gas Utilities	24,356
41790	Utilities Fees (Tax Comm for Pub. Service)	8,549,353
41800	Tax Collection Fees	1,997,867
41820	Bingo License Fees	1,607,897
41830	Workers Compensation Commission - Administrative Fees	4,938,064
41840	Workers Compensation Commission - Secondary Injury	17,800
41880	Trailer Registration Fees - Tax Commission	0
41885	ATV/Motorcycle Sales Fees - Tax Commission	942,723
41900	City Utility Tax (private owned telephone company)	692,300
41920	Attorney General Fees	8,665,234
41940	Underground Storage Tank - Reg Fee	838,350
41950	Asbestos Abatement Cert Fee - Asbestos Fee	319,054
41960	Loan Administration Fee	1,703,985
41970	Truck & Bus Permit Fees	12,625,491
41980	Other Regulatory Fees	4,964,561
41990	Other Licenses, Fees & Permits	38,601,182
41995	Credit Card Convenience Fees	696,077
41996	Consumer Fees for Third-Party Processing	6

TOTAL REGULATORY & OTHER SPECIAL FUND FEES

509,243,258

FINES, FORFEITS & PENALTIES

Forfeitures

42200	Bond Forfeitures	743,678
42210	Seized & Forfeited Property	785,176

Other Fines & Penalties

42300	Drivers Penalties	5,786,190
42310	Criminal Law Assessment Fines	21,620,767
42320	DWFP - Fines & Penalties	62,251
42330	Penalties on Audit Recoveries	0
42340	Veterans Home Purch Bd - Late Penalties	58,450
42350	Other Fines & Penalties	11,423,685
42360	State Court Education Fees	2,184,679
42370	Court Constituent Fees	377,084
42390	Emergency Medical Fine	2,028,370
42391	Trauma Care	7,938,018
42420	Criminal Bonds Fee	268,714
42475	DWFP - Licenses Violation	45,518
42500	Hwy Weight Penalties	1,464,198
42510	Harvest Permit Fees	288,096
42600	ABC Liquor Permit Fines	2,500
42700	Victim Compensation Fees - Implied Consent	176,482
42710	Victim Compensation Fees - Other Misdemeanor	813,709
42720	Victim Compensation Fees - Other Felony	57,430
42730	Victim Compensation Fees - Restitution	27,964
42740	Victim Compensation Fees - Pre - trial Intervention	25,795
42750	Victim Compensation Fees - MS Prison Industries	1,900

TOTAL FINES, FORFEITS & PENALTIES	56,180,654
RENT & USE OF STATE PROPERTY	
Sales of Products - Outside	
43000 Sale of Penitentiary Products	1,323,347
43010 Sale of Products (other than penitentiary)	146,650
43011 Seedling Sales	0
Rent & Use of State Property	
43100 Rent of State Property	27,108,451
43110 Memorial Stadium Receipts	913,748
43120 Coliseum Receipts	690,583
43140 Oil & Gas Royalties - Mineral Lease Comm	325,260
43160 State Fair Receipts	2,701,696
43170 Rental of Office Space	16,647,692
TOTAL RENT & USE OF STATE PROPERTY	49,857,427
INTEREST, DIVIDENDS & GAINS	
Interest, Dividends & Gains From Sale of Investment	
43300 Interest on Investments - General Fund	(339,113)
43310 Interest on Vet Home Purch Bd Loans	8,435,029
43350 Interest on Investments - Special Fund	32,304,939
43370 Interest on Checking/Savings Accts	25,155
43380 Interest Earned on Loans	5,917,862
43390 Other Interest	4,524,479
TOTAL INTEREST, DIVIDENDS & GAINS	50,868,351
GRANTS	
Federal Grants - in - Aid	
44000 Dept of Education Programs	798,592,712
44005 Rehabilitation Services	81,688,043
44020 Library Comm Programs	2,277,764
44030 Bd of Health Programs	181,469,223
44040 Agriculture & Commerce Programs	9,065,082
44041 EPA Programs	421,563
44042 USDA Programs	900,901
44080 Forestry Programs	4,131,145
44100 Public Welfare Programs	336,953,643
44110 Employment Sec Comm Programs	96,757,654
44120 National Guard	75,709,192
44130 Emergency Mgmt Programs	323,350
44190 T.V.A. Payments in Lieu of Taxes	24,135,035
44210 Grants to Mental Institutions	0
44220 DWFP - Wildlife & Fisheries Grants	14,536,599
44240 Institutions of Higher Learning Grants	302
44250 Bureau of Pollution Control Grants	52,842,840
44260 Mental Illness & Retardation Programs	24,933,259
44270 Governor's Fed - State Programs	634,159,863
44280 Medicaid Programs	3,834,249,647
44300 Highway Safety Patrol	44,477,277
44320 DWFP - Bureau of Parks Grants	1,090,769
44330 DWFP - Marine Resources Grants	12,977,121

44390	Miscellaneous Federal Grants	573,810,710
44395	Federal Capital Grants	586,109,804
Revenue from Political Subdivisions		
44400	Revenue from Counties in MS	105,340,660
44450	Revenue from Cities in MS	7,475
44460	Participating Funds - Political Subdivisions	10,205,782
44470	Revenue from State Colleges/Universities	5,281,402
TOTAL GRANTS		7,512,448,817
DONATIONS & OVERPAYMENTS		
Donations & Overpayments		
44500	Donations	31,080,152
44510	Tax Comm - Overpayment of Taxes	14,321,250
TOTAL DONATIONS & OVERPAYMENTS		45,401,402
REVENUE OF SUBGRANTEES		
Revenue of Subgrantees		
44630	Federal Sub - Grants from Other Funds	350,695,721
44635	ARRA Federal Sub - Grants Received From Other Funds	230,916,894
44700	ARRA Federal Sub-Grants Received From Other Governments	7,948
TOTAL REVENUE OF SUBGRANTEES		581,620,563
REVENUE FROM CURRENT SERVICES		
Revenue from Current Services		
45000	Reimbursements from Outside Agencies	136,102,297
45010	Sales of Supplies and Services Outside of State Agencies	83,007,675
45020	Sales of Supplies and Services between Agencies	90,947,470
45040	SAAS Production Charges	2,434,923
45042	Repayment to MMRS Revolving Fund	6,128,007
45050	Sale of Supplies/Svcs - GAAP Gen. Funds	1,772,014
45051	MMRS Training Room Rental	1,125
45060	Sales of Supplies and Services between GAAP Special Revenue Funds	98
45065	State Administrative Charges	25,350
45070	Payments from Medicaid	359,503,302
TOTAL REVENUE FROM CURRENT SERVICES		679,922,261
COMPENSATION FROM SALE, LOSS OR DAMAGE TO PROPERTY		
Sales		
46000	Sale of Real Estate	347,343
46010	Sale of Personal Property	4,375,313
46020	Sale of Scrap	729,999
46030	Other Sales	8,346,869
46040	Gain on Disposal of Capital Assests	83,115
Escheats & Awards		
46110	Awards for Damages	113,157,964
Insurance Adjustments & Settlements		
46200	Insurance Adjustments & Settlements	187,960
TOTAL COMPENSATION FROM SALE, LOSS OR DAMAGE TO PROPERTY		127,228,563

BOND ISSUES & NOTES**Proceeds of Borrowed Funds**

47000	Proceeds of Notes and GO Bond Issues	745,670,000
47060	Proceeds from Notes Payable	245,705
47090	Premium on Notes and Bonds Sold	0

TOTAL BOND ISSUES & NOTES**745,915,705****TRANSFERS, REFUNDS & OTHER RECEIPTS****Intra-Budget Transactions**

49030	Gross Sales of Alcoholic Beverages	212,102,215
49050	ABC Clearing - Liquor Excise Tax	(95)
49060	ABC Clearing - Liquor Privilege Tax	2,666,625
49090	ABC Clearing - Miscellaneous Income	29,469

Inter-Budget Transactions

49120	Lease - Purchase Program Funds	17,024,421
49150	Transfer from Other Funds	1,776,612,880
49155	Cost Pool Transfer In	3,599,678
49160	Cost Allocation Reimbursement	5,100,335

Refunds

49300	Refunds of Prior Year Disbursements	8,817,360
49305	Five Year Cancelled Warrants Returned	912,322
49320	Refunds of Erroneous Payments	54,157
49330	Medicaid Refunds	169,744,567
49340	Refunds from Cafeteria Plans	2,138
49370	Refunds from Utility Companies	31,475
49380	Refund of Bond and Interest Payments	286,935
49390	Other Refunds	47,602,555
49395	Prior Year Subgrant Refunds	39,893

Loans Repaid to State

49500	Loans Repaid to State	76,717,394
49510	Loans Repaid to Vet Home Purchase Bd	15,333,315
49520	Loans Repaid by the VA	1,278,529

Loans Between Funds

49600	Loans Received from Other Funds	500,000
-------	---------------------------------	---------

Other Non-Governmental Receipts

49900	Veterans' Home Purchase Board-Escrow Receipts	4,711,710
49903	Garnishments	2,322
49910	Other Nongovernmental Receipts	28,440,869
49920	Participating Funds-Nongovernment Agencies	409,132
49925	Recovery Work Comp Related	425,422
49930	Unemployment Insurance Receipts from State Agencies	2,463,680
49935	Worker's Compensation Program Premium Receipts	15,052,056
49940	Tort Claims Premium	5,402,899
49950	VHPB-Loan Fees	105,093
49960	MPACT Contract Receipts	21,817,519
49968	MACS Program Manager Transfers	141,250
49970	Clearing Fund Receipts	8,901

49980 Fulfillment Fee Receipts 761,750

Other Receipts (Balance Sheet Account)

10110	Cash in Checking Accounts	779
10125	Daily Demand Deposit Account - Interest Bearing	14,550,000
10180	Cash with Fiscal Agent	194,853
10200	Petty Cash	1,841
10801	Repurchase Agreements (invested by the State Treasurer)	0
11050	Fixed and Variable Investments	112,593,523
11125	Accounts Receivable Suspense	4,733
11950	Temporary Advance to Cafeteria Plans	40,345
12404	Due from Federal Government - CMIA	(37,770,318)
12405	Due from Federal Government - CMIA Prior Year	69,315,812
12410	Due from Other Governments - Current	0
12510	Deferred compensation Contributions Receivable - Current	7,730,400
14200	Inventory of Stores for Resale	103,950
21020	Accrued Taxes Payable	19,536,246
21410	Due to Local Governments or Other States	344,362
21600	Due to Other Funds	26,448
21800	Customer Deposits	10,887,910
21850	Funds Held for Others	637,826
21900	Cancelled Warrants Payable	(885,747)
22200	Deferred Revenue - Unearned (other than Federal)	(5,124,069)
22500	Deferred CMIA Federal Revenue	(31,603,558)
28670	Loans Payable - Current	45,000,000
36100	Unreserved - Undesignated - Adjustments to Fund Balance	(379,865,255)
37200	Restricted for Health and Social Services	(98,284)

Other Transfers & Refunds (919,231,569)

TOTAL TRANSFERS, REFUNDS & OTHER RECEIPTS 1,324,588,999

TOTAL SPECIAL FUND RECEIPTS \$13,646,827,080

**STATE TREASURY
SCHEDULE OF SPECIAL FUND DISBURSEMENTS
FOR THE YEAR ENDED JUNE 30, 2011**

3008	JT LEG OP-JOINTOPS 11	230,000
3051	SUPREME CT-SPECIAL	5,460
3052	SUPREME CT-CONT LEGAL ED	120,014
3053	SUPREME CT-ADM OFFICE	15,366,054
3055	SUPREME CT-COURT REPORTER	25,980
3056	SUPREME CT-BAR ADMISSIONS	344,725
3058	SUPREME CT-ADMIN-SPEC	772,599
3059	SUPREME CT-CIVIL LEGAL ASST	822,000
3060	SUPREME CT-DRUG COURT FUND	6,019,533
3061	SUPREME CT ELECTRONIC SYS	1,100,681
3071	ATTY GEN	13,146,168
3072	ATTY GEN-INSUR ENFORCE	122,731
3073	ATTY GEN-PROSECUTOR EDUC	755,202
3074	ATTY GEN-CRIME VICTIM ADMIN	703,371
3075	ATTY GEN-CRIME VICTIM COMP	5,295,517
3076	ATTY GEN-VULNERABLE ADULTS TRUST	232,135
3077	ATTY GEN-CHILD SUPPORT TRUST	169,993
3078	ATTY GEN-JUDGMENTS	1,149,677
3079	ATTY GEN-LAW/FIREFIGHTER DISABLE	235,615
3080	DFA-TORT CLAIMS	4,400,057
3081	DFA-PROPERTY INSURANCE	6,879,228
3084	DFA-PROSECUTOR COMP	26,506
3089	DFA-DA BUDGET CONT	6,769
3095	COMM JUDICIAL PERF-SPEC FEES	203,401
3097	CAPITAL DEFENSE COUNSEL	1,272,639
3098	CAPITAL POST-CONVICT COUN	867,747
3099	INDIGENT APPEALS ADMIN FUND	1,172,455
3100	OFF OF INDIGENT APPEALS-PUB DEF	315,980
3102	DPS-FED ST PROGRAMS	27,301,621
3103	GOV OFF-VET MILIT TRANS	27,141
3106	GOV OFF HEAD START	74,276
3109	DPS-FED ST ALCOHOL PROG	130,270
3111	SEC OF ST-SPECIAL	9,507,167
3112	SEC OF ST-LAND RECORDS	712,212
3113	SEC OF ST-PUB TR TIDELANDS	7,948,858
3114	SEC OF ST-SECURITY ENF	1,223,322
3115	SEC OF ST-HELP VOTE	1,672,417
3118	SEC OF ST-POINT CADET	3,973,275
3119	SEC OF ST CNTY VOTE ASSIST	74,293
3120	DFA-WIND 10	436,229
3121	DFA-421 W PASCAGOULA	111,898
3122	DFA-N ST PROP 09	1,332,359
3125	DFA-MS MGT & REPORT SYS	7,294,353
3126	DFA-MS GOV PORTAL FEES	245,121
3127	DFA AARA SFSF/ED JOBS	3,055,635
3128	DFA-CAPITOL POLICE CONTRACTS	404,187
3129	DFA-GLOBAL MATCH	1,227,490
3130	DFA-STATEWIDE ACCT SYSTEM	2,751,871
3131	DFA-CAPITOL FAC RENT	15,194,510
3132	DFA-MASTER LEASE PURCHASE	16,923,658
3133	DFA-MEM STAD 09	1,591,098
3134	DFA-MVMS REVOLVING	377,230
3135	DFA-AIR TRANSPORT SERVICE	75,268
3136	DFA-SURPLUS PROPERTY STATE	245,622
3138	DFA-SURPLUS PROPERTY FED	586,422
3140	DFA 3RD PARTY MATCH PYMT	103,118
3141	DFA-INSURANCE RECOVERY	2,201,278

3142	DFA-INTERNAL COST ALLOC	666,593
3143	DFA-STATEWIDE COST ALLOC	1,451,759
3144	DFA-MAGIC BD 11	2,351,429
3147	DFA-BUDGET CONT FUND	2,327,894
3148	DFA-LOCKHEED MARTIN MAINT	40,335
3149	DFA-STATE FISCAL RELIEF	24,548
3155	DEPT AUDIT	5,197,417
3170	ST TREAS-MPACT TRUST	37,734,462
3171	ST TREAS-MPACT ADM	1,378,854
3176	ST TREAS-ESCHEATMENT	46,237
3178	ST TREAS-ABAND PROP FUNDS	3,107,909
3179	ST TREAS-ABAND PROP CLAIM	4,602,832
3181	TAX COMM-SALES TAX FEES	123
3183	ST TREAS-MACS ADM	141,597
3186	TAX COMM-SEIZED PROP/CASH	654,991
3187	GAMING COMM-INVESTIGAT	8,589,108
3188	GAMING COMM-CHAR BINGO	1,755,766
3201	DEPT EDUC-SPECIAL FUNDS	777,973,672
3202	DEPT EDUC-ADMINISTRATION	21,558,705
3203	DEPT EDUC-PUB SCH ED TECH	1,117,352
3206	DEPT EDUC-VOC & TECH	15,409,086
3212	DEPT EDUC-SC DISTRICT MLP	1,311,993
3213	DEPT EDUC-CRIT TEACH SHORT	3,933,472
3214	DEPT EDUC-SCH BLIND INV	40,000
3215	DEPT EDUC-TOBACCO FUNDS (3215)	126,472
3217	DEPT EDUC-SCH BLIND/DEAF	791,313
3218	DEPT EDUC-SD AD VAL TX RED	10,600,371
3219	ST TREAS-EDUC IMPR TRUST	75,722
3220	DFA-STATE SCHOOL EMP INSUR	265,620,723
3222	DFA-STATE SCHOOL EMP INS RES	200,000,000
3230	DEPT EDUC-ADEQUATE ED-SPEC FD	220,038,676
3231	DEPT EDUC-ADEQUATE ED-CAP IMP	40,211,357
3235	DEPT RHB SERV-VRB-SPECIAL	10,842,858
3240	DEPT RHB SERV-OSDP-SPECIAL	55,199,823
3244	AUTH FOR ETV-MAETV BND 11	21,670
3245	LIBRARY COMM-FEDERAL	2,197,389
3246	LIBRARY COMM-MISCELLANEOUS	321,682
3247	AUTH FOR ETV	5,369,962
3249	LIBRARY COMM CAP IMP 2004	230,221
3250	LIBRARY COMM STAY CONNECT	11,088
3257	IHL-STATE COURT EDUCATION	1,413,707
3258	IHL-AYERS ENDOWMENT INT	507,236
3260	IHL-ARRA-COLLEGE OF VET MED	833,020
3274	IHL-ARRA-GS09	43,889,378
3277	MS COMM VOLUNTEER SVC SPECIAL	692,433
3280	IHL-ARRA UMMC	11,227,683
3282	IHL-UMC HEALTHCARE	2,380,431
3286	IHL-UMC ACT CTR	1,741,771
3291	BD OF CMNTY & JR COL-SPEC	36,906,683
3292	BD OF CMNTY & JR COL-WORK	314,642
3295	BD OF CMNTY & JR COL-H&L CARRY	371,000
3297	BD OF CMNTY & JR COL-PROP	49,350
3298	BD OF CMNTY & JR COL-WORKFORCE	13,776,040
3299	BD OF CMNTY & JR COL-ARRA CJC	19,142,781
3300	DEPT HEALTH-LOCAL FUND	13,996,368
3301	DEPT HEALTH-FED & MISC	229,385,989
3302	DEPT HEALTH-EMERG WTR 95D	260,291
3303	DEPT HEALTH-IMP LOAN 95D	21,837,657
3305	DEPT HEALTH-HLTH CARE EXP FD	7,169,502
3306	DEPT HEALTH-TOBACCO CONTRL(3306	22,621,009
3308	DEPT HEALTH-MS BURN CARE	614,500
3309	DEPT HEALTH SER 06D LOC GOV RUR	1,478

3310	DEPT HEALTH-TRAUMA 08	17,678,905
3312	DEPT HEALTH-08A WATER	5,064
3313	DEPT HEALTH-ARRA-WATER	8,278,027
3314	DEPT HEALTH-ARRA-HEALTH	5,600,302
3323	MEDICAID-REFUND ACCOUNT	171,529,440
3324	MEDICAID-BUDGET&CONTIGENCY	22,837,520
3325	MEDICAID-CIVIL PENALTY FUND	5,746
3326	MEDICAID-HLTH CARE EXP FD	84,115,568
3327	MEDICAID-MED CARE DONAT	280,341,195
3328	MEDICAID-DIV OF GEN SERV	4,064,256,115
3330	DEPT RHB SERV-VOC RHB SER	48,175,734
3332	DEPT RHB SERV-SPINAL/HEAD	68
3333	DEPT RHB SERV-WAIVER PROGRAM	17,828,148
3335	DEPT RHB SERV-ADM	2,304,355
3340	DEPT RHB SERV-DDS-SSA	31,153,326
3341	DEPT RHB SERV-DDS-MED	232,857
3362	EAST MS HOSP-GENERAL	1,174,454
3365	NORTH MS REG CTR-HLTHCARE TRUST	860,013
3366	HUDSPETH REG CTR-SUPPORT	278,239
3370	DEPT MENTAL HLTH-PUR SERV	17,802,921
3371	DEPT MENTAL HLTH	15,399,457
3372	EAST MS HOSP-SUPPORT	25,853,912
3373	ELLISVILLE ST SCH	79,066,709
3374	MS STATE HOSPITAL-INMATE	35,803,451
3377	DEPT MENTAL HLTH-CRISIS INTV	4,740,135
3379	DEPT MENTAL HLTH-AL/DRUG	6,176,026
3380	DEPT MENTAL HLTH-SVC HLTH CARE	22,525,601
3382	BOSWELL REGIONAL CENTER	21,808,168
3384	NORTH MS STATE HOSPITAL	1,281,923
3385	NORTH MS REGIONAL CENTER	54,249,067
3386	HUDSPETH REGIONAL CENTER	44,401,374
3387	SOUTH MS REGIONAL CENTER	30,899,926
3388	SOUTH MS REG CTR-OPERATIONS	177,061
3389	CMS RESIDENTIAL CENT	213,035
3391	SOUTH MS STATE HOSPIT	1,253,365
3392	CONTROL AND TREAT MENT	2,785
3393	JUVENILE TRT FAC-SPECIAL	4,607,719
3394	SOUTH MS HOSP-HLTHCARE TRUST	118,764
3398	MS STATE HOSP BROOKHAVEN	48,521
3400	DEPT AG & COMM-MEAT INSP	2,605,206
3401	DEPT AG & COMM-MISC	2,534,860
3402	DEPT AG & COMM-MEAT LICEN	400
3404	DEPT AG & COMM-BEAVR CTRL	450,000
3405	DEPT AG & COMM CORN PROMOTION	803,578
3406	DEPT AG & COMM-EGG MKT BD	72,606
3407	DEPT AG & COMM-AG & FOR MUS	549,284
3408	DEPT AG & COMM-FARM MKT	27,417
3409	DEPT AG & COMM-PRO UN WTR	116,665
3410	MDA-TOURISM MATCH GRANTS	39,935
3412	MDA-HWY	(511)
3413	MDA-PORT AUTHORITY	70,000
3414	MDA-ECON DEV MATCH GRANTS	23,606
3415	MDA-SM BUS LOAN-KATRINA	50,310
3418	MDA-PROCUREMENT CTRS	617,251
3419	MDA-FIN RES ADM OPER	920,775
3420	MDA-FEDERAL & SPECIAL	4,599,864
3426	BOARD OF ANIMAL HEALTH	44,820
3427	VETERINARY DIAG LAB BD	4,416
3428	BD OF ANIMAL HEALTH	655,681
3429	DEPT AG & COMM-BOLL WEEVIL	215,134
3430	FAIR COMM-COLISEUM	4,590,393
3435	FAIR COMM-DIXIE NATL LIVE	1,005,261

3437	DEPT AG & COMM BPI SEED LAB	172,511
3449	MAR RES SER 06D DMR EQUIP FACILI	971,929
3450	DEPT MARINE RES	26,069,175
3452	DEPT MARINE RES-TIDELANDS TRUST	6,897,297
3454	INSTITUTE FOR FOREST INVEN	122,781
3455	FORESTRY COMM-MISC	9,474,276
3456	FORESTRY COMM-VOLUNTEER FIRE EQ	65
3458	FORESTRY COMM-KURTZ	21,282
3459	FORESTRY COMM-TREE SEED	4,140
3460	DEPT WILD FISH PKS	32,373,058
3461	DEPT WILD FISH PKS-PARKS	11,680,939
3462	DEPT WILD FISH PKS-MOTOR	723,568
3464	DEPT WILD FISH PKS-NAT SC MUS	1,240,457
3469	DEPT WILD FISH PKS-TMBR SP OP	124,387
3470	DEPT WILD FISH PRKS-FO	388,637
3471	DEPT ENV QUAL-ADM SERV	2,162,084
3472	GRAND GULF MILIT MON-SPEC	103,198
3473	ARCHIVES & HIST-TRUST	2,484
3474	ARCHIVES & HIST-LOCAL GOV	1,024
3475	ARCHIVES & HIST	4,729,352
3476	ARCHIVES & HIST-HIST PROP	294,753
3480	ARCHIVES & HIST-NEW CAP R&R	750,000
3481	SOILD&WTR CONS-08A SOIL/WTR	500,874
3482	SOIL & WTR CONS-WATERSHED	1,471
3483	SOIL & WTR CONS-EDUC	6,036
3485	SOIL & WTR CONS-WILDFLOWER	1,370
3486	SOIL & WTR CONS	1,816,604
3487	SOIL & WTR CONS-SER 90A	196,725
3491	OIL & GAS BD	2,434,534
3493	OIL & GAS BD-EMERG PLUG	278,364
3500	MS INS DEPT-WINDSTORM	16,865,027
3501	DEPT INSURANCE	10,828,545
3502	ST FIRE ACADEMY-FIRE SCH	5,535,932
3503	DEPT INSURANCE-LIQ GAS	39,070
3505	DEPT INSURANCE-MUNI FIRE	14,424,843
3506	DEPT INSURANCE-CTY VOL FIRE	14,832,421
3508	DEPT INSURANCE-08A RFTAAP	66,030
3509	DEPT INSURANCE-PROPANE ED	252,325
3511	DEPT BANK & CONS FIN-ADM	3,912,656
3512	DEPT BANK & CONS FIN-CONS FIN	2,422,243
3521	WORK COMP COMM-ADM	5,022,386
3522	WORK COMP COMM-SECOND INJ	134,506
3531	PUB EMPLOY RET SYS-ADM	16,297,131
3533	PUB EMPLOY RET SYS-REPAIR	57,770
3547	MS DEPT OF CORR-VICTIM IN07	496,236
3548	DEPT CORRECT-PAROLE BD 08	25
3549	DEPT CORRECT-RECYCLE PROG	68,785
3551	DEPT CORRECT-INSTITUTION	3,690,017
3552	DEPT CORRECT-PRISON AGRI	2,318,716
3553	DEPT CORRECT-MED SVCS DEF	587,767
3554	DEPT CORRECT-TRAINING REV	97,724
3556	DEPT CORRECT-CMNTY SERV	6,456,265
3559	DEPT CORRECT-LOC CONF DEF	1,771,047
3564	DEPT CORRECT-PRIVATE PRISONS	489,306
3580	DEPT ENV QUAL-LAND/WATER	289,389
3584	DEPT ENV QUAL-POLLUTE CTRL	10,179,636
3585	DEPT ENV QUAL-GC OIL SP 10	168,900
3586	DEPT ENV QUAL-POLLUTE EPA	64,293,258
3588	DEPT ENV QUAL-SRF ADMIN	22,948
3589	DEPT ENV QUAL-HUD/MDA SUBGRANT	174,041,288
3590	DEPT ENV QUAL-GEOL SURVEY	6,587,540
3592	DEPT ENV QUAL-SURFACE COAL	17,657

3594	DEPT ENV QUAL-08A POLLUTION	510,349
3596	DEPT ENV QUAL-WTRPOL EMER	76,200
3597	DEPT ENV QUAL-POLLUTE REV	39,543,702
3598	DEPT ENV QUAL-09C-WATER	269,887
3599	DEPT ENV QUAL-10F WATER 11	2,251
3600	BD OF EXAM LIC PROF COUNS	126,607
3601	DEPT INFO TECH SERVICES	36,148,041
3605	DEPT INFO TECH-WCC OPER 08	28,555,402
3606	DEPT INFO TECH-SER 09A WCC	500
3607	DEPT INFO TECH-09E WCC	9,710,306
3609	DEPT INFO TECH-ARRA GRANT	1,055,356
3614	ST PERSONNEL BD	5,455,683
3642	DFA-SELF-INS WORKER COMP	15,142,072
3644	DFA-UNEMPLOY INSURANCE	3,658,996
3649	DHS-COMMUNITY SERVICES	66,871,682
3650	DHS-SOCIAL SERV BLOCK GRT	5,133,439
3651	DHS-ADMINISTRATION	85,246,924
3652	DHS-CHILD SUPP SPECIAL	37,617,446
3653	DHS-SOCIAL SERV SPECIAL	103,178,105
3655	DHS-SUPPORT SERV SPECIAL	12,502,420
3658	DHS-CHILDREN & YOUTH	96,237,166
3659	DHS-AGING & ADULT SERV	23,577,442
3662	DHS-YOUTH SERVICES	7,878,574
3664	DHS-MS CHILDREN'S TRUST	639,219
3671	EMPLOY SEC COMM	145,231,421
3675	EMPLOY SEC COMM-ADMIN	768,399
3676	EMPLOY SEC COMM-BLDG&LAND	1,734,993
3678	EMPLOY SEC COMM WKFRC TRAINING	18,349,031
3700	MILITARY DEPT-NATL GD TMBER	420,938
3701	MILITARY DEPT-NATL GD FED	56,447,249
3703	MILITARY DEPT-ARMORY SPEC	12,933,032
3704	MILITARY DEPT NGA MONTI 11	366,421
3705	MILITARY DEPT-YCP	5,682,043
3706	MILITARY DEPT-MSNG SPRC DES	80,663
3707	MILITARY DEPT FAMILY RELIEF	34,081
3709	MILITARY DEPT-ANG TRNG	14,259,183
3710	DPS-FORFEITED FUNDS	966,878
3711	DPS-HIGHWAY PATROL	8,685,020
3713	DPS-CRIME LAB	2,776,035
3714	DPS-LAW ENFORCE TRNG ACAD	865,789
3715	DPS-SUPPORT SERVICES	1,600,530
3716	DPS-DRIVER SERVICES FEES	10,332,208
3717	DPS-WEAPONS PERMIT	286,647
3718	BUREAU OF NARCOTICS	5,931,080
3719	DPS-SALVAGE CERT OF TITLE	1,289,710
3720	MS BUR OF NARC-DRUG EVID 11	24,010
3721	EMERG MGT-ADMINISTRATIVE	4,159,513
3725	EMERG MGT-DISASTER ASSIST	2,351,488
3726	EMERG MGT-GRAND GULF	277,672
3727	EMERG MGT-HAZARD TRAN PER	7
3728	EMERG MGT-PUB ASSIST PROG	10,690,489
3729	EMERG MGT-HURRICANE KATRINA	179,107,940
3730	VET AFFAIRS BD-SPEC TAG	114,511
3731	VET AFFAIRS BD	135,022
3732	VET AFFAIRS BD-VET HOME	34,323,939
3734	VET HOME PUR BD	14,559,886
3735	VET HOME PUR BD-ESCROW	4,768,704
3740	DPS-MEDICAL EXAMINER	320,434
3741	DPS-CO JAIL OFF TRNG FD	505,580
3742	DPS-LAW ENFORCE	1,555,801
3744	DPS-EMERG TELECOM	726,632
3746	DPS-LEADERSHIP COUN AGING	286,570

3747	DPS-WIRELESS RAIDO COM	2,825,117
3748	DPS-LOCAL CRIME STOPPERS	239,311
3749	DPS-JUVENILE FACILITY MONITORING	173,643
3757	DPS-HOMELAND SECURITY	40,032,073
3758	TAX COMM-PETRO MUNI AID	1,546,759
3759	TAX COMM-TVA IN LIEU	30,574,197
3761	ST TREAS-GAS SEV TAX CNTY	6,803,101
3762	ST TREAS-OIL SEV TAX CNTY	15,112,969
3763	ST TREAS-TIMB SEV TAX CNTY	659,995
3764	ST TREAS-GAS TAX CNTY	48,987,754
3765	ST TREAS-TRUCK & BUS PRIV	24,821,761
3767	TAX COMM-INTER FUEL TAX	9,869,089
3768	TAX COMM-CRUISE VSL FEES	94,838,283
3769	TAX COMM-MOTOR VEH AD VAL	136,530,785
3770	TAX COMM-MOTOR VEH RENT	6,158,728
3771	ST TREAS-SALES/UTILITY TAX	408,331,214
3772	TAX COMM-PAY IN LIEU TAX	18,800,812
3773	TAX COMM-RAIL CAR IN LIEU	4,460,779
3774	TAX COMM-TELE AD VALOREM	10,655,124
3775	TAX COMM-PREPAID E911	3,439,552
3776	TAX COMM-HAZ WSTE MGT TAX	13,460
3777	Tax Comm Ex Ind WH10	152,920
3778	TAX COMM MMEIA REB 11	1,268,944
3779	TAX COMM-FIRE INS TAX JKN	228,777
3780	ST TREAS-UNIV SPECIAL TAG	3,163,346
3785	ST TREAS-FLOOD CONTROL	347,852
3786	ST TREAS-NATL FOREST RES	7,746,342
3805	TAX COMM-LIC TAG 10	1,337,821
3811	PUB SERV COMM-MOTOR CARR	5,519,284
3812	PUB SERV COMM-PUB UTIL	2,148,066
3813	PUB SERV COMM-PHONE SOLIC	220,785
3820	Auctioneer Comm-Licens	103,629
3821	BD OF NURSING HOME ADMIN	122,256
3822	BD OF COSMETOLOGY	795,257
3823	BD OF PSYCHOLOGICAL EXAM	102,162
3824	BD OF DENTAL EXAMINERS	748,634
3825	AGRICULTURAL AVIATION BD	8,944
3826	DEPT AG & COMM-RICE PROM	1,245,403
3827	BD OF VETERINARY MEDICINE	203,654
3828	BD OF PHYSICAL THERAPY	230,147
3829	BD OF MEDICAL LICENSURE	1,910,346
3830	REAL ESTATE COMM: HOME INSPEC	54,419
3831	BD OF OPTOMETRY	92,111
3832	REAL ESTATE COMM	1,293,851
3833	BD OF FUNERAL SERVICES	165,231
3834	BD OF PUB CONTRACTORS	1,267,239
3835	BD OF PUB CONTRACTORS-ED	867,594
3836	REAL ESTATE APPR LIC BD	385,575
3838	BD OF NURSING	2,769,575
3839	MOTOR VEHICLE COMMISSION	280,666
3840	BD OF BARBER EXAMINERS	256,751
3841	DEPT AG & COMM-SOYBEAN PR	3,684,917
3842	BD OF REG PROF ENG & SURV	429,832
3843	ATHLETIC COMM	120,285
3844	BD OF REG FOR FORESTERS	24,601
3845	BD OF PUB ACCOUNTANCY	534,119
3846	BD OF PHARMACY	1,673,914
3847	COMM STATUS OF WOMEN	295
3848	BD OF ARCHITECTURE	296,482
3849	BD OF CHIROPRACTIC EXAM	57,215
3850	BD OF PUB ACCOUNTANCY CPA EXAM	234,245
3851	TAX COMM-INC TX REFUND	436,045,837

3852	TAX COMM-ITS MODRN 10	4,235,233
3854	TAX COMM-JOB INCENTIVE	7,743,816
3855	TAX COMM-SPECIAL REFUNDS	13,914,026
3856	TAX COMM-APPORTION TAG	1,042,160
3857	BD OF MASSAGE THERAPY	177,843
3858	BD OF REG PROF GEOLOGISTS	93,976
3859	BD OF SOCIAL WORKERS & MARR	242,494
3865	ARTS COMM	1,022,489
3868	ARTS COMM-NONFED FUNDS	10,000
3874	ARTS COMM-ARRA ARTS	40,425
3875	ARTS COMM-09C-BLDG ART	737,538
3895	TAX COMM-ABC REVOLVING	232,063,856
3896	TAX COMM-PERMIT CLEARING	2,710,365
3897	TAX COMM-FINGERPRINT	26,208
3910	DFA-CAP IMP-IHL/AGENCY-SER 05	1,876,277
3911	DFA-CAP IMP-CJC-SER 05	1,120,541
3913	DFA-CAP IMP-IHL&AGENCY-SER 05	22,829
3914	DFA-BUREAU BLDG DISC-SER 05	18,672
3921	DFA-OFF OF BLDGS	29,261,513
3922	DFA 09 COAHOM 11	8,784
3928	DFA-ARRA-ENERGY	5,163,467
3930	DFA-FLOOD CLAIM STLMNT	608,565
3931	DFA-CAP IMP-AG REAPPR	13,184,408
3935	PORT GULFPORT-OP RESERVE	363
3940	DEPT TRANS-ASSET SEIZURE	25,701
3941	DEPT TRANS-SUPPORT	1,153,041,725
3942	DEPT TRANS-RAILROAD REVIT	918
3944	DEPT TRANS-LITTER PREVENT	287,200
3945	DEPT TRANS-HARVEST PERMIT	286,384
3946	ST AID ROAD-CONSTR	96,957,104
3947	ST AID ROAD-ADM	4,459,100
3948	ST AID ROAD-BRIDGE	26,054,768
3949	DEPT TRANS-OVERWGT FINES	1,606,065
3950	ST TREAS BOND COSTS	594,648
3951	ST TREAS-GF BOND & INT	3,268,113
3952	ST TREAS-GO BOND CALL FD	(325,181)
3953	DEPT TRANS-EQUIP PURCHASE	2,064,105
3955	DEPT TRANS-MULTI MODAL	7,493,293
3956	DEPT TRANS- H BRIDGE 11	21,418
3957	DEPT TRANS-VIS 21 HI 11	16,861
3958	DEPT TRANS-C SHEL ACC 11	2,734
3965	MS BUS FIN CORP-SED REPAY	8,214,383
3971	ST TREAS-PT JKN CNTY B & I	590
3972	PORT GULFPORT-BOND & INT	3,187,084
3973	PORT GULFPORT-RESERVE	660
3974	MS BUS FIN CORP-SED 08 A-D	98,807
3978	MBFC-SED FIN ACT 07-E-F	156,016
3992	ST TREAS-WORK CASH STAB	500,000
300B	SER 03E IHL & ST AG CL FUND	921,214
300V	SER 03E CIVIL WAR BATTLEFIELD	85,655
307B	ATTY GEN-MEDICAID FRAUD	2,222,791
307C	ATTY GEN-CYBER-CRIME	216,382
307D	ATTY GEN-DOM VIOLENCE	279,491
310G	DPS-OJP BYRNE JUS ASS 07	3,088,743
310H	DPS-OJP HURRICANE REL 07	1,733,030
310J	DPS-JUVENILE ACCOUNT	374,334
310K	GOV OFF-DISASTER ASSISTANCE	71,635
310N	GOV OFF-ARRA-B-BAND	922,122
310R	DPS-ARRA-BYRNE	3,186,736
310V	DPS-PLAN-ARRA VICTIMS	483,346
310W	DPS-ARRA VAWA	1,136,181
311M	SEC OF ST-HELP MS VOTE 07	301,093

311P	SEC OF ST-PRENEED	205
325E	IHL-STUDENT FINANCIAL AID	923,225
326C	IHL-ALCOHOL SAFETY EDUC	88,783
331A	DEPT HEALTH-10F LG WTR 11	1,398,580
338D	NORTH MS ST HOSP-B-CC-08	9,201
338F	NORTH MS ST HOSP-C-CC 08	55,011
338I	CENTRAL MS RES CTR-CC08-NEWTON	88,480
339E	SOUTH MS ST HOSP-SMSHCC-08	306,092
340B	DEPT AG & COMM FED AG GRANT	7,618,891
340C	DEPT AG&COMM-PEANUT-PROM FD-07	62,664
341C	MDA-ENERGY	415,878
341J	MDA-COMM HOUSING REV LOAN	2,121,866
341K	MDA-SINGLE FAM RES LOAN	66,367
341R	MDA-AGRIBUS REV LOAN	10,139,812
341S	MDA-HWY LOCAL FUNDS	1,209,551
341U	MDA-ARRA-MDA	34,810,893
341W	MDA-CDBG KATRINA EMER	497,395,020
341X	MDA-COMM DEV-HUD/ARC	54,824,693
341Y	MDA-CDBG ECON DEV REV	2,605,310
341Z	MDA-COMM DEV-NSP	15,281,648
345B	FORESTRY COMMISSION-FRDP 07	1,131,828
346A	DEPT WILD FISH PKS-GULF	1,525
346C	DEPT WILD FISH PKS-HERITAGE	801,906
346D	DEPT WILD FISH PKS-ENDOWMENT	333,993
346F	DEPT WILD FISH PKS-MOON LAKE	2,917,982
346G	DEPT WILD FISH PKS FOUNDATION	14,360
349A	DEPT MARINE RES-09C-DMR EQU	2,735,159
349B	DEPT MAR RES-GC OIL SP 10	48,915,444
34AA	MDA-MILK PROD TRANSP 07	202,555
34AB	MDA-MILK PRODUCERS TRANS 08	25,000
34AC	MDA-INFINITY 11	14,975,306
34AE	MDA-10C INC 11	50,539,580
34AF	MDA-TOUR ST 11	135,452
34AG	MDA HERIT HIS 11	59,285
34AH	MDA-MBI-LAKE MARY 10F	1,823
34AJ	MDA-10D WK FRC 11	20,973
34AK	MDA-10D SU EN 11	5,243
34AL	MDA-10D RR LI 11	10,377
34AM	MDA-10D IND 11	35,006,378
34AN	MDA-10D SM BU 11	551,788
34AP	MDA-09B-RAILROAD	488,901
34AT	MDA-08B RR/BR	132
34AV	MDA-MBI-SER K-PORT REVIT	1,500,000
34BP	MDA GC OIL SP 10	18,504,203
34CC	MDA-08B EMERGING	198,579
34CD	MDA-09D-EMERG CP	394,383
34CN	MDA-MS MAJ EC IMP-SER F	4,162,105
34CR	MDA-ENERGY DEV LOANS	97,200
34EA	MDA-RURAL IMPACT ACT 2003	51,863
34EC	MDA-RURAL IMPACT SER 05	173,304
34ED	MDA-09D-RURAL	110,272
34EE	MDA-09B-RURAL	986,481
34EF	MDA SER 06E RURAL IMP ACT	836,361
34EG	MDA-10D RURAL 11	10,118
34FB	MDA-FARISH ST HIST DIST REPAY	47,207
34FC	MDA-09B-FARISH	1,030,806
34FD	MDA-10D FARIS 11	5,154
34FE	MDA SER 06E FARISH ST HIST	1,000,815
34GH	MDA-08B SHIPYARD	6,486,136
34HB	MDA-ECON DEV HWY 08	250
34HC	MDA-08B EDH	7,588,624
34HD	MDA-09D-ECO HWY	3,733,176

34HE	MDA-10F EC DV 11	8,901,983
34JA	MDA-SM MUNI, LMT POP CO	171,686
34JC	MDA-SM MUNI LMTPOP 03 SER C	291,431
34JD	MDA-09G-SM MUNIC	2,117,428
34JF	MDA-SM MUNI LMTPOP SER 05 E	641,863
34JG	MDA SER 06E SMALL MUNIC LIMIT PO	176,545
34JH	MDA-SMALL MUNIC & LIM POP 08	411,320
34JK	MDA-08B SM MUNIC	561,029
34JL	MDA-10D SM MU 11	27,459
34KA	MDA-LOC GOV CAP IMP 05 E	86,863
34KE	MDA-IHL CAP IMPR-95C	4,716,963
34KF	MDA-08B CI LOAN	182,399
34KW	MDA-LOC GOV CAP-SER 95D	11,137,184
34KX	MDA-LOC GOV CAP-INT-95D	1,823,469
34MD	MDA-MBIA-DIP 08	575,162
34MF	MDA SER 06E MBIA DIP	524,723
34MH	MDA 10C DIP 11	16,508
34MI	MDA-10A DIP 10	2,994,622
34MJ	MDA-09B-MBI-DIP	27,514
34MM	MDA-MBI-SER X-2001	107,000
34MP	MDA-MBI 2003 SERIES Z	392,743
34MT	MDA 10C ME/TC 11	3,803,542
34MX	MDA-10B MEIA TC	15,000,000
34MY	MDA-10A MEIA SCH	15,050,000
34NA	MDA-MS MAJ EC IMP-SER 97H	133
34NB	MDA-MEIA-BAXTER SER 2007-A	245
34ND	MDA-MMEIA-COOP 09	1,238,532
34NE	MDA-MEI SERIES J 2003	244,790
34NL	MDA-09E-COOPER	1,920,558
34NT	MDA-MIA-NISSAN-SER 2003A	294,880
34NU	MDA-MMEIA SER 2003	520,715
34NW	MDA-MINERAL LEASE 2004	874
34NX	MDA-MMEIA PACCAR 09	68,505
34PG	MDA-08B ACE	6,036,647
34PH	MDA-09E-ACE	304,095
34PJ	MDA-10D ACE 11	26,215
34RA	MDA-LOC GOV FR RAIL 2004	144,511
34RT	MDA-LOC GOV FR RAIL-2002	104,668
34RZ	MDA-LOC GOV FR RAIL REPAY	999,998
34T5	MDA-TOYO(4) 09	270,980
34T6	MDA-SER 09E-TOYO	7,658,709
34T7	MDA 10C TOY 6 11	8,031,093
34T8	MDA-10D TOY 7 11	27,419
34TA	MDA-SALES TAX INCENTIVE	3,155,461
34TB	MDA-09E-EXIST IN	2,269,376
34TC	MDA-EXISTING IND SER A	111,489
34TD	MDA-EXIST IND 09	6,026,286
34TE	MDA-JOB PROTECT SER A	306,382
34TF	MDA-08B JOB PROT	693,328
34TG	MDA-09B-JOB PROT	1,472,977
34TH	MDA-09B-EXIST IN	63,941
34TJ	MDA-10D EX IN 11	83,772
34TT	MDA-MMEIA-07 TAX INCEN	1,408,513
34TZ	MDA-TECH ALLIANCE ADMIN-08	218,476
34WE	MDA-LAND,WTR,TMBR-SER D	107,147
350A	DEPT INS RURAL FIRE SUPP	66,094
350C	DEPT INSURANCE-RES ELEC LIC	88,451
350E	DEPT INSURANCE-09G-SRFTP	400,381
350F	DEPT INSURANCE-09G-RFTAAP	1,611,055
350H	DEPT INS CIG SFTY 11	5,480
350I	DEPT INS 10RFTP 10	544,191
350J	DEPT INS 10 SRFTP	547

371A	DPS-DISABILITY AND RELIEF	3,788,962
371B	DPS-D.L. PHOTO FEES	2,378,716
371C	DPS-DRIVER'S LICENSE SPEC FEES	1,513,215
371D	DPS-CRIME STOPPERS	134,222
371E	DPS-CRIME LAB IMP CONSENT	487,418
371G	DPS-OFFICE DEATH BEN TRUST	406,250
371H	DPS-FINGERPRINT PROC FEE	1,981,535
371L	DPS-TROOP SCH 11	1,462,898
371M	DPS-INFO EXCH 09	107,504
371N	DPS-DNA ID 11	416,682
372C	EMERG MGT-LOWNDES DISATER	383,221
372K	EMERG MGT-KATRINA MATCH	21,966,077
372U	EMERG MGT-HAZARD MIT	41,882,575
375A	DPS-HOMELAND SEC ADMIN	1,722,766
37AD	DPS-ADV GRANTS	950,628
37AH	MEMA-ALT HOUSING PILOT PROG	31,389,052
37HM	EMERG MGT HAZARD MIT ADMIN	1,625,781
37PA	EMERG MGT PUBLIC ASSIT ADMIN	3,251,045
37RG	EMERG MGT REIMBURSABLE GRANTS	967,400
37SS	EMERG MGT HURRICANE RESERVE	2,022,720
391A	DFA-07A IHL CI ALCORN	313,015
391F	DFA-CAP IMP-IHL AG 04-2003E	544,911
391M	DFA-CAP IMP-IHL/AGY 2005A	221,798
391V	DFA-CAP IMP-04 05 IHL SER 05A	922,800
391W	DFA-CAP IMP-04 05 CJC SER 05A	4
393Q	DFA SER 06D 2006 CAPITAL IMPROV	298,701
393U	DFA SER 06D 2004 IHL ST AG	5,924,435
393V	DFA SER 06D 2004-2005 CJC CI	15,274
393X	DFA SER 06D 2006 ST BLDG CJC R/R	229,280
393Y	DFA SER 06D 2006 IHL EMEG R/R	1,723,097
393Z	DFA SER 06D 2006 DPS IMP	37,727
394Q	ST AIDROAD-ST AID RD 11	18,228
394R	ST AID ROAD H SPRINGS09	3,245
394S	ST AID ROAD BRIDGE 11	36,456
394V	ST AID ROAD-BRIDGE BOND 06	753
394Y	ST AID ROAD 07 LOC SYS BRIDGE	28,472
394Z	OFF ST AID RD CON 08A BRIDGE	251,573
396A	ST TREAS-TAX EXEMPT NOTE 2005A	432,492
396F	ST TREAS-MAJ EC IMP SINK-I	1,948,305
396J	ST TREAS-CAP IMP-PREM & INT-05	121,386
396L	ST TREAS-CAP IMP PROV-SER 2001	37,500
396P	MS HOME CORP-AFF HSNB PRIN	352,000
396U	ST TREAS-CAP IMP-SER 2002	52,781
396V	ST TREAS-DEER ISLAND-SINKING	1,018,148
396Y	ST TREAS-FARISH ST SINK FD	10,621
397E	ST TREAS-EMER CROP SINK-SER D	13,516
397L	ST TREAS-MBI SINK-SER L	263,948
397N	ST TREAS-MBI SINK-SER M	364,426
397R	ST TREAS-MBI SINK-SER	5,335,787
397W	ST TREAS-GAMING CO SINK	32,414,894
398G	ST TREAS-MPCOSystemRestorSinking	14,660,475
398H	ST TREAS-EMISystemRestorSinking	6,110,168
398K	ST TREAS-JOB PROT 07 SKG	257,797
398L	ST TREAS-EXIST IND 07 SKG	232,404
398M	ST TREAS-SER07B TAX EXEMPT BD FD	3,000,683
398N	ST TREAS-SER07C TAXABLE BD	220,529
398T	ST TREAS-08A TAX EX BD SKG FD	1,230,267
398U	MARINE RES-MARINE SINK	391,038
398X	ST TREAS-MBI SINK-SER I	2,900,235
399M	DFA-MUN REV 10	750,000
39AG	DFA-CAP IMP-IHL&AGENCY-06 CP	41,482
39AH	DFA-CAP IMP-ST BLD&CJC-06 CP	669,094

39AR	DFA-CAP IMP-IHL EMER-06 CP	255,806
39BJ	DFA-OFF OF BLDGS-2001 CAP IMP-01	79,516
39CB	DFA-CAP IMP-IHL&AGENCY-SER 2002	210,769
39DC	DFA SER07-CJC CI	56,372
39DH	DFA-SER07-06 CAPITAL IMPROVEMENT	4
39DJ	DFA-SER07-2007 STATE AG CAP IMPR	669,538
39DL	DFA-SER07-2006 DPS IMPROVEMENTS	61,283
39DN	DFA-SER07-2003 IHL&ST AGCY CI	473,830
39DP	DFA-SER07-04/05 IHL & ST AGCY CI	42,942
39DQ	DFA-SER07-2003 AYERS SETTLEMENT AG	355,122
39FA	DFA-SER07B-2003 AYERS SETT CI	4
39FC	DFA-SER07B-04/05 IHL&ST AG CI	3,933,350
39FD	DFA-SER07B-04/05 CJC CI	2,564,605
39FE	DFA-SER07B-04/05 AYERS SETTLE CI	3,192,526
39FF	DFA-SER07B-2006 CI	2,665,992
39FG	DFA-SER07B-06 ST BLDGS&CJC R&R	834,090
39FH	DFA-SER07B-06 IHL EMERGENCY R&R	129,341
39FJ	DFA-SER07B-MS COMM HERITAGE PRES	6
39FK	DFA-SER07B-2006 DPS IMPROV	422,383
39FM	DFA-SER07B-2007 IHL CI	10,786,581
39FN	DFA-SER07B-2007 IHL DISC	135,798
39FP	DFA-SER07B-2007 GVILLE HIGH ED	5,638
39FQ	DFA-SER07B-2007 CJC CI	2,650,820
39FR	DFA-SER07B-2007 ST AGENCIES CI	4,469,195
39FS	DFA-SER07B-2007 BOB DISCRETIONAR	2,066,881
39FT	DFA-SER07B-HINDS CC FFA BLDG	65,387
39FU	DFA-SER07B-07KEMPER COMM GR HOME	1,824
39FV	DFA-SER07B-07DWFP DISCRETIONARY	414,915
39FW	DFA-SER07C-04/05 IHL&ST AG CI	96,904
39FX	DFA-SER07C-2007 ST AGENCIES CI	2,034,161
39FZ	DFA-SER07C-NASA SHARES SERVICES	1,056,079
39GA	DFA-08A-07 IHL CI	4,363,379
39GB	DFA-08A-07 CJC	3,506,282
39GC	DFA-08A-07 ST AG	316,174
39GD	DFA-08A-07 BOB	2,768,510
39GE	DFA-08A-08 IHL CI	7,875,363
39GF	DFA-08A-08 CJC	1,658,088
39GG	DFA-08A-08 EMSH	1,010,377
39GH	DFA-08A-08 BOB	1,737,080
39GK	DFA-08A-G'VILLE	4,557
39GL	DFA-08A-HERITAGE	584,922
39GM	DFA-08A-HLTH-LAB	997
39GN	DFA-08B-05 CHILD MUS	19
39HA	DFA-09G-BB KING	1,032
39HB	DFA-09G-MARITIME	1,032
39HC	DFA-09G MUS ART	2,065
39HD	DFA-09G-H'BURG Z	825
39HE	DFA-09G-PORT GVL	7,467
39HF	DFA-09G-JXN ZOO	1,106
39HG	DFA-09G-CRIME LB	875,349
39HH	DFA-09G-CJC	3,766,005
39HJ	DFA-09G-BOB/DMH	148,440
39HK	DFA-09G-CAP CENT	2,454,686
39HL	DFA-09G-BOB DISC	19,278,914
39HM	DFA-09G-FIRE ACA	1,036,624
39HN	DFA-09G-IHL CI	4,688,603
39HP	DFA-09C-HERITAGE	799,780
39HQ	DFA-09C-SOUTH AR	7,346
39HR	DFA-09C-04/05-ST	66,500
39HS	DFA-09C-HLTH LAB	6,605,013
39HT	DFA-09C-07 CJC	1,933,664
39HU	DFA-09C-08 CJC	2,065,725

39KA	DFA-10 IHL/5A 11	12,242,849
39KB	DFA-10F 10 BOB 11	1,376,604
39KC	DFA-10F 10 CJC 11	2,106,296
39KD	DFA-10F CHILD 11	2,494,644
39KE	DFA-10F 09 OHR 11	2,790,487
39KF	DFA-10F TOUR 11	1,335,051
39KG	DFA-10F JZOO 11	99,659
39KJ	DFA-10F LLTR 11	697,621
39KL	DFA-10F ART 11	1,993,745
39KM	DFA-10F ENERG 11	34,916
39KN	DFA-10F 09 IHL 11	51,984
39KP	DFA-10F 09 BOB 11	1,397,365
39KR	DFA-10F CL/ME 11	53,661
39KS	DFA-10F NA SC 11	1,000,278
39KT	DFA-10F HERIT 11	10,062
39KU	DFA-10F SW MCC 11	996,601
TOTAL SPECIAL FUND DISBURSEMENTS		<u><u>\$13,302,826,169</u></u>

STATE TREASURY
SCHEDULE OF EDUCATION ENHANCEMENT FUND RECEIPTS
FOR THE YEAR ENDED JUNE 30, 2011

TAXES

Tax Commission Taxes

40150	Sales Tax	248,666,139
40280	Use (compensating) Tax	24,639,401

TOTAL TAXES **273,305,540**

INTEREST, DIVIDENDS & GAINS FROM SALE OF INVESTMENTS

Interest, Dividends & Gains From Sale of Investments

43350	Interest on Investments - Special Fund	(12,204)
-------	--	----------

TOTAL INTEREST, DIVIDENDS & GAINS FROM SALE OF INVESTMENTS **(12,204)**

TRANSFERS, REFUNDS & OTHER RECEIPTS

Inter-Budget Transactions

49150	Transfer from Other Funds	230,999,945
-------	---------------------------	-------------

Refunds

49305	Five Year Cancelled Warrants Returned	635
-------	---------------------------------------	-----

Other Nongovernmental Receipts

49910	Other Nongovernmental Receipts	48,707,407
-------	--------------------------------	------------

Other Receipts (Balance Sheet Account)

21900	Cancelled Warrants Payable	0
-------	----------------------------	---

Other Transfers & Refunds **(283,165,326)**

TOTAL TRANSFERS, REFUNDS & OTHER RECEIPTS **(3,457,339)**

TOTAL EDUCATION ENHANCEMENT FUND RECEIPTS **\$269,835,997**

STATE TREASURY
SCHEDULE OF EDUCATION ENHANCEMENT FUND DISBURSEMENTS
FOR THE YEAR ENDED JUNE 30, 2011

4030	IHL-UNIV ED ENHANCE	41,810,620
4034	IHL-VETERINARY MED	540,900
4035	IHL-MSU-MS-COOP EXTENSION	954,041
4036	IHL-MSU-MS-AG & FORESTRY	1,140,246
4037	IHL-MSU-FORESTRY/WILDLIFE	247,509
4038	IHL-UNIV MEDICAL CTR	3,453,687
4039	IHL-SYSTEM ADMINISTRATION	326,249
4042	IHL-ALCORN AGRICULTURAL PROG	20,552
4080	BD CMNTY & JR COL-ED ENHANCE	28,898,154
4104	AUTH FOR ETV-ED ENHANCE	1,581,707
4108	ARTS COMM-ED ENHANCE	307,603
4109	LIBRARY COMM-ED ENHANCE	554,441
4110	BD CMNTY & JR COL-OTH SUPP	956,936
4201	DEPT EDUC-REG ED ENHANCE	22,033,647
4206	4206 DEPT EDUC-VOC ED-EEF	3,766,642
4230	DEPT EDUC-ADEQUATE ED-EEF	169,882,639
4231	DEPT EDUC-NON PUBLIC TEXTBOOKS	119,528
TOTAL EDUCATION ENHANCEMENT FUND DISBURSEMENTS		\$276,595,101

**STATE TREASURY
SCHEDULE OF CLEARING FUND RECEIPTS & DISBURSEMENTS
FOR THE YEAR ENDED JUNE 30, 2011**

CLEARING FUND RECEIPTS:

TRANSFERS, REFUNDS & OTHER RECEIPTS

Other Non-Governmental Receipts

40150	Sales Tax	10,014,699
40280	Use (compensating) Tax	2,225,918
49390	Other Refunds	73
49970	Clearing Fund Receipts	(8,976,310)

Other Receipts (Balance Sheet Accounts)

20210		(73)
21900	Canceled Warrants Payable	(1,588)
22200	Deferred Revenue - Unearned (Other than Federal)	1,894,828

TOTAL TRANSFERS, REFUNDS & OTHER RECEIPTS

5,157,547

TOTAL CLEARING FUND RECEIPTS

\$5,157,547

CLEARING FUND DISBURSEMENTS:

9895	TAX COMMISSION - ABC Clearing	34,011
------	-------------------------------	--------

TOTAL CLEARING FUND DISBURSEMENTS

\$34,011

STATE TREASURY
FUNDS INVESTED BY THE STATE TREASURY & INTEREST REVENUE
AS OF JUNE 30,2011

FUND	FUND NAME	FUND BALANCE	TOTAL EARNINGS
2999	PERMANENTLY OPEN ST GEN FUND	152,721,301	18,462,087
3475	ARCHIVES & HIST	2,760,242	-
3477	ARCHIVES & HIST-DESOTO TR	1,627	-
3476	ARCHIVES & HIST-HIST PROP	5,368,984	255,363
3478	ARCHIVES & HIST-MUSEUM	118,437	1,902
3480	ARCHIVES & HIST-NEW CAP R&R	1,542,863	34,055
3473	ARCHIVES & HIST-TRUST	228,922	3,955
3865	ARTS COMM	1,313	-
3875	ARTS COMM-09C-BLDG ART	2,251,305	46,141
3867	ARTS COMM-CHALLENGE INITIATI	6,679	-
4108	ARTS COMM-ED ENHANCE	23,506	-
3868	ARTS COMM-NONFED FUNDS	74,237	-
3864	ARTS COMM-SER2008CULTURAL DEV	-	59
3843	ATHLETIC COMM	89,177	-
3071	ATTY GEN	5,552,830	-
3077	ATTY GEN-CHILD SUPPORT TRUST	582,903	-
3074	ATTY GEN-CRIME VICTIM ADMIN	172,079	2,514
3075	ATTY GEN-CRIME VICTIM COMP	2,297,906	56,174
307C	ATTY GEN-CYBER-CRIME	690,526	-
307E	ATTY GEN-DA OP 11	8,857	44
307D	ATTY GEN-DOM VIOLENCE	682,973	-
3175	ATTY GEN-ESCROW ACCT	8,033	-
3072	ATTY GEN-INSUR ENFORCE	409,070	7,426
3078	ATTY GEN-JUDGMENTS	554,199	-
3079	ATTY GEN-LAW/FIREFIGHTER DISABLE	2,297,558	37,590
307B	ATTY GEN-MEDICAID FRAUD	1,441,414	-
3073	ATTY GEN-PROSECUTOR EDUC	1,131,580	-
3076	ATTY GEN-VULNERABLE ADULTS TRUST	177,803	-
3820	AUCTIONEER COMM-LICENSE	237,082	-
3247	AUTH FOR ETV	2,875,548	39,939
3242	AUTH FOR ETV-CAP EQUIP RE	8,190	-
4104	AUTH FOR ETV-ED ENHANCE	41,790	-
3244	AUTH FOR ETV-MAETV BND 11	1,970,125	14,439
3428	BD OF ANIMAL HEALTH	506,017	-
3848	BD OF ARCHITECTURE	404,380	-
3840	BD OF BARBER EXAMINERS	64,214	-
3849	BD OF CHIROPRACTIC EXAM	116,961	-
3296	BD OF CMNTY & JR COL-BUDGT CONT	2	-
3295	BD OF CMNTY & JR COL-H&L CARRY	316,374	-
3297	BD OF CMNTY & JR COL-PROP	136,083	-
3291	BD OF CMNTY & JR COL-SPEC	4,524,621	-
3298	BD OF CMNTY & JR COL-WORKFORCE	13,925,121	-
3822	BD OF COSMETOLOGY	393,474	7,775
3824	BD OF DENTAL EXAMINERS	946,703	18,411
3600	BD OF EXAM LIC PROF COUNS	229,973	-
3833	BD OF FUNERAL SERVICES	519,509	-
3857	BD OF MASSAGE THERAPY	215,964	-
3829	BD OF MEDICAL LICENSURE	3,101,218	-
3838	BD OF NURSING	5,875,182	-
3821	BD OF NURSING HOME ADMIN	214,879	1,523
3831	BD OF OPTOMETRY	119,667	-
3846	BD OF PHARMACY	1,542,582	-
3828	BD OF PHYSICAL THERAPY	412,331	-
3823	BD OF PSYCHOLOGICAL EXAM	100,291	-
3845	BD OF PUB ACCOUNTANCY	381,485	-
3850	BD OF PUB ACCOUNTANCY CPA EXAM	134,534	-
3834	BD OF PUB CONTRACTORS	2,392,423	-
3835	BD OF PUB CONTRACTORS-ED	456,469	-
3844	BD OF REG FOR FORESTERS	114,782	-
3842	BD OF REG PROF ENG & SURV	1,260,123	21,041
3858	BD OF REG PROF GEOLOGISTS	150,751	2,548
3859	BD OF SOCIAL WORKERS & MARR	52,342	-
3827	BD OF VETERINARY MEDICINE	89,829	-
3426	BOARD OF ANIMAL HEALTH	78,476	-

STATE TREASURY
FUNDS INVESTED BY THE STATE TREASURY & INTEREST REVENUE
AS OF JUNE 30,2011

FUND	FUND NAME	FUND BALANCE	TOTAL EARNINGS
3382	BOSWELL REGIONAL CENTER	5,517,918	-
3718	BUREAU OF NARCOTICS	448,797	-
3097	CAPITAL DEFENSE COUNSEL	1,434,906	24,031
3098	CAPITAL POST-CONVICT COUN	2,188,990	-
3390	CENTRAL MS RES CTR CRISIS	215	-
338H	CENTRAL MS RES CTR-CC08 NEWTON	1,157,192	-
338I	CENTRAL MS RES CTR-CC08-NEWTON	88,480	-
3389	CMS RESIDENTIAL CENT	1,222,339	-
3096	COMM JUDICIAL PERF	32	-
3095	COMM JUDICIAL PERF-SPEC FEES	127,417	2,791
3847	COMM STATUS OF WOMEN	2,966	-
3392	CONTROL AND TREAT MENT	848,799	-
3437	DEPT AG & COMM BPI SEED LAB	459,816	-
3405	DEPT AG & COMM CORN PROMOTION	9,773	-
340B	DEPT AG & COMM FED AG GRANT	30,467	15,467
3407	DEPT AG & COMM-AG & FOR MUS	51,724	-
3406	DEPT AG & COMM-EGG MKT BD	109,415	-
3408	DEPT AG & COMM-FARM MKT	10,122	-
3436	DEPT AG & COMM-FORFEITURE	5,786	100
3400	DEPT AG & COMM-MEAT INSP	2,543,994	-
3402	DEPT AG & COMM-MEAT LICEN	269	-
3401	DEPT AG & COMM-MISC	384,644	-
3409	DEPT AG & COMM-PRO UN WTR	3,149,969	-
3826	DEPT AG & COMM-RICE PROM	44,191	1,960
3841	DEPT AG & COMM-SOYBEAN PR	60,689	4,327
3155	DEPT AUDIT	1,369,725	-
3511	DEPT BANK & CONS FIN-ADM	847,554	-
3512	DEPT BANK & CONS FIN-CONS FIN	1,068,727	-
3556	DEPT CORRECT-CMNTY SERV	4,012,895	-
3557	DEPT CORRECT-CONFISCATED	30,812	-
3551	DEPT CORRECT-INSTITUTION	1,564,544	-
3559	DEPT CORRECT-LOC CONF DEF	38,611	-
3553	DEPT CORRECT-MED SVCS DEF	44,758	-
3548	DEPT CORRECT-PAROLE BD 08	600	-
3552	DEPT CORRECT-PRISON AGRI	916,294	-
3564	DEPT CORRECT-PRIVATE PRISONS	731,042	-
3549	DEPT CORRECT-RECYCLE PROG	138,595	-
3562	DEPT CORRECT-REG FAC DEFICIT	14,800	-
3554	DEPT CORRECT-TRAINING REV	841,654	-
3231	DEPT EDUC-ADEQUATE ED-CAP IMP	23,483,957	269,805
4230	DEPT EDUC-ADEQUATE ED-EEF	15	-
3230	DEPT EDUC-ADEQUATE ED-SPEC FD	949,763	-
3202	DEPT EDUC-ADMINISTRATION	11,937,510	-
3213	DEPT EDUC-CRIT TEACH SHORT	863,142	-
3207	DEPT EDUC-EM ASSIST 09	450,000	-
3933	DEPT EDUC-FINANCE CONST	1,846,774	-
3200	DEPT EDUC-GENERAL ED-SPEC	83	-
4231	DEPT EDUC-NON PUBLIC TEXTBOOKS	188,927	-
3203	DEPT EDUC-PUB SCH ED TECH	397,667	-
4201	DEPT EDUC-REG ED ENHANCE	255,507	-
3212	DEPT EDUC-SC DISTRICT MLP	40	-
3214	DEPT EDUC-SCH BLIND INV	1,164,420	20,519
3217	DEPT EDUC-SCH BLIND/DEAF	129,086	-
3232	DEPT EDUC-SCH DEAF/BLIND-SPEC	123,821	-
3218	DEPT EDUC-SD AD VAL TX RED	43,033,525	-
3201	DEPT EDUC-SPECIAL FUNDS	1,807,161	-
3204	DEPT EDUC-TECH PREP	548	-
3206	DEPT EDUC-VOC & TECH	75,923	-
4206	DEPT EDUC-VOC ED-EEF	19,744	-
3594	DEPT ENV QUAL-08A POLLUTION	-	6,724
3598	DEPT ENV QUAL-09C-WATER	605,096	14,843
3599	DEPT ENV QUAL-10F WATER 11	2,470,261	21,035
3471	DEPT ENV QUAL-ADM SERV	656,595	-
3585	DEPT ENV QUAL-GC OIL SP 10	1,854,909	-
3590	DEPT ENV QUAL-GEOL SURVEY	135,674	-

STATE TREASURY
FUNDS INVESTED BY THE STATE TREASURY & INTEREST REVENUE
AS OF JUNE 30,2011

FUND	FUND NAME	FUND BALANCE	TOTAL EARNINGS
3580	DEPT ENV QUAL-LAND/WATER	362,783	-
3494	DEPT ENV QUAL-POLLUTE CTL	(22)	-
3584	DEPT ENV QUAL-POLLUTE CTRL	35,856,077	636,650
3495	DEPT ENV QUAL-POLLUTE EPA	393	-
3586	DEPT ENV QUAL-POLLUTE EPA	1,738,891	-
3597	DEPT ENV QUAL-POLLUTE REV	86,903,857	1,298,936
3588	DEPT ENV QUAL-SRF ADMIN	9,140,111	142,972
3592	DEPT ENV QUAL-SURFACE COAL	403,857	6,609
3596	DEPT ENV QUAL-WTRPOL EMER	3,211,413	53,626
3309	DEPT HEALTH SER 06D LOC GOV RUR	4	5
3312	DEPT HEALTH-08A WATER	19	19
331A	DEPT HEALTH-10F LG WTR 11	793	7,183
3314	DEPT HEALTH-ARRA-HEALTH	160,304	-
3302	DEPT HEALTH-EMERG WTR 95D	7,164,894	122,921
3301	DEPT HEALTH-FED & MISC	9,172,410	-
3305	DEPT HEALTH-HLTH CARE EXP FD	7,375,694	-
3303	DEPT HEALTH-IMP LOAN 95D	42,032,249	687,089
3300	DEPT HEALTH-LOCAL FUND	61,312	-
3308	DEPT HEALTH-MS BURN CARE	3,076,346	56,314
3306	DEPT HEALTH-TOBACCO CONTRL(3306)	2,363,480	-
3310	DEPT HEALTH-TRAUMA 08	2,228,773	84,832
3603	DEPT INFO TECH PS COMMUNICATE	25	-
3601	DEPT INFO TECH SERVICES	6,683,429	-
3607	DEPT INFO TECH-09E WCC	5,373,066	82,376
3602	DEPT INFO TECH-E GOV SERVICES	602,138	-
350J	DEPT INS 10 SRFTP	596,702	5,752
350I	DEPT INS 10RFTP 10	848,942	12,737
350H	DEPT INS CIG SFTY 11	117,520	-
350A	DEPT INS RURAL FIRE SUPP	-	222
3501	DEPT INSURANCE	19,418,916	-
3508	DEPT INSURANCE-08A RFTAAP	-	194
350F	DEPT INSURANCE-09G-RFTAAP	8	11,741
350E	DEPT INSURANCE-09G-SRFTP	934,211	20,051
3506	DEPT INSURANCE-CITY VOL FIRE	158,931	-
3503	DEPT INSURANCE-LIQ GAS	29,581	-
3505	DEPT INSURANCE-MUNI FIRE	371,095	-
3509	DEPT INSURANCE-PROPANE ED	136,278	4,084
350C	DEPT INSURANCE-RES ELEC LIC	253,425	3,012
3507	DEPT INSURANCE-RURAL FIRE	1,892	33
349B	DEPT MAR RES-GC OIL SP 10	25,658,913	-
3450	DEPT MARINE RES	14,292,231	302,981
349A	DEPT MARINE RES-09C-DMR EQU	1,853,866	71,472
3452	DEPT MARINE RES-TIDELANDS TRUST	20,089,831	341,364
3371	DEPT MENTAL HLTH	9,062,931	-
3379	DEPT MENTAL HLTH-AL/DRUG	1,143,860	-
3377	DEPT MENTAL HLTH-CRISIS INTV	355,541	4,782
3370	DEPT MENTAL HLTH-PUR SERV	963,088	-
3380	DEPT MENTAL HLTH-SVC HLTH CARE	903,447	-
3335	DEPT RHB SERV-ADM	128,138	-
3341	DEPT RHB SERV-DDS-MED	47,043	-
3340	DEPT RHB SERV-DDS-SSA	175,043	-
3240	DEPT RHB SERV-OSDP-SPECIAL	9,364,633	-
3332	DEPT RHB SERV-SPINAL/HEAD	7,319,962	118,328
3330	DEPT RHB SERV-VOC RHB SER	3,435,054	-
3235	DEPT RHB SERV-VRB-SPECIAL	798,645	-
3333	DEPT RHB SERV-WAIVER PROGRAM	17,141,607	286,983
3956	DEPT TRANS- H BRIDGE 11	15,023,091	8,217
394L	DEPT TRANS OPLIFESV 11	1,228	-
3940	DEPT TRANS-ASSET SEIZURE	2,044,415	-
3958	DEPT TRANS-C SHEL ACC 11	2,776,792	1,049
3953	DEPT TRANS-EQUIP PURCHASE	2,262,962	25,682
3945	DEPT TRANS-HARVEST PERMIT	63,175	-
3944	DEPT TRANS-LITTER PREVENT	356,263	-
3955	DEPT TRANS-MULTI MODAL	328,100	9,617
3949	DEPT TRANS-OVERWGT FINES	313,146	-

STATE TREASURY
FUNDS INVESTED BY THE STATE TREASURY & INTEREST REVENUE
AS OF JUNE 30,2011

FUND	FUND NAME	FUND BALANCE	TOTAL EARNINGS
3942	DEPT TRANS-RAILROAD REVIT	5,391,866	89,884
394E	DEPT TRANS-SER07B-MDOT 278 BYPAS	2	-
3941	DEPT TRANS-SUPPORT	81,080,172	1,644,073
3957	DEPT TRANS-VIS 21 HI 11	17,746,908	6,469
3460	DEPT WILD FISH PKS	7,104,741	145,054
346G	DEPT WILD FISH PKS FOUNDATION	12,602	-
346D	DEPT WILD FISH PKS-ENDOWMENT	1,003,388	22,583
346A	DEPT WILD FISH PKS-GULF	395,410	-
346C	DEPT WILD FISH PKS-HERITAGE	669,177	-
346F	DEPT WILD FISH PKS-MOON LAKE	-	47,025
3462	DEPT WILD FISH PKS-MOTOR	1,382,599	24,607
3464	DEPT WILD FISH PKS-NAT SC MUS	1,163,849	-
3461	DEPT WILD FISH PKS-PARKS	3,049,474	52,107
3465	DEPT WILD FISH PKS-PEARL RIV	88,722	-
3466	DEPT WILD FISH PKS-SEAFOOD	52,459	-
3469	DEPT WILD FISH PKS-TMBR SP OP	1,798,931	32,108
3470	DEPT WILD FISH PRKS-FO	785,903	8,755
3922	DFA 09 COAHOM 11	242,171	2,350
3140	DFA 3RD PARTY MATCH PYMT	82,319	-
3925	DFA LEASE,SUBLEASE MAURICE JOS P	295,475	5,084
3998	DFA REHAB REFUNDING 2004	860,647	14,808
393U	DFA SER 06D 2004 IHL ST AG	1,685,841	88,223
393V	DFA SER 06D 2004-2005 CJC CI	-	140
393Q	DFA SER 06D 2006 CAPITAL IMPROV	-	1,249
393Z	DFA SER 06D 2006 DPS IMP	24	151
393Y	DFA SER 06D 2006 IHL EMEG R/R	405,202	17,093
393X	DFA SER 06D 2006 ST BLDG CJC R/R	223,878	5,362
39DC	DFA SER07-CJC CI	-	167
391A	DFA-07A IHL CI ALCORN	-	4,339
39GD	DFA-08A-07 BOB	4,156,972	-
39GB	DFA-08A-07 CJC	903,776	51,539
39GA	DFA-08A-07 IHL CI	10,969,093	234,119
39GC	DFA-08A-07 ST AG	7,596,627	134,994
39GH	DFA-08A-08 BOB	1,027,730	31,206
39GF	DFA-08A-08 CJC	1,530,776	39,588
39GG	DFA-08A-08 EMSG	634,141	25,240
39GE	DFA-08A-08 IHL CI	14,306,743	330,179
39GK	DFA-08A-G'VILLE	250,812	4,365
39GL	DFA-08A-HERITAGE	-	2,808
39GM	DFA-08A-HLTH-LAB	-	7
39HR	DFA-09C-04/05-ST	837,421	15,188
39HT	DFA-09C-07 CJC	4,320,671	99,234
39HU	DFA-09C-08 CJC	4,146,448	84,970
39HP	DFA-09C-HERITAGE	1,219,271	31,814
39HS	DFA-09C-HLTH LAB	12	31,335
39HQ	DFA-09C-SOUTH AR	-	57
39HC	DFA-09G MUS ART	-	14
39HA	DFA-09G-BB KING	-	7
39HL	DFA-09G-BOB DISC	7,452,670	325,002
39HJ	DFA-09G-BOB/DMH	3,107,738	54,844
39HK	DFA-09G-CAP CENT	412,520	25,135
39HH	DFA-09G-CJC	7,582,331	179,663
39HG	DFA-09G-CRIME LB	3,163,212	65,236
39HM	DFA-09G-FIRE ACA	704,039	26,594
39HD	DFA-09G-H'BURG Z	-	4
39HN	DFA-09G-IHL CI	21,367,880	434,279
39HF	DFA-09G-JXN ZOO	-	7
39HB	DFA-09G-MARITIME	-	7
39HE	DFA-09G-PORT GVL	-	49
39KA	DFA-10 IHL/5A 11	54,344,774	582,939
39KP	DFA-10F 09 BOB 11	4,623,915	54,755
39KN	DFA-10F 09 IHL 11	7,729,030	74,253
39KE	DFA-10F 09 OHR 11	-	6,109
39KB	DFA-10F 10 BOB 11	19,059,884	193,063
39KC	DFA-10F 10 CJC 11	12,156,701	126,310

STATE TREASURY
FUNDS INVESTED BY THE STATE TREASURY & INTEREST REVENUE
AS OF JUNE 30,2011

FUND	FUND NAME	FUND BALANCE	TOTAL EARNINGS
39KL	DFA-10F ART 11	-	4,904
39KD	DFA-10F CHILD 11	1,580	10,172
39KR	DFA-10F CL/ME 11	7,978,354	76,648
39KM	DFA-10F ENERG 11	4,985,093	47,905
39KT	DFA-10F HERIT 11	1,495,941	14,372
39KG	DFA-10F JZOO 11	-	217
39KJ	DFA-10F LLTR 11	-	1,527
39KS	DFA-10F NA SC 11	-	5,857
39KU	DFA-10F SW MCC 11	-	2,180
39KF	DFA-10F TOUR 11	3,202,502	37,799
3121	DFA-421 W PASCAGOULA	197,241	3,720
3135	DFA-AIR TRANSPORT SERVICE	465,109	-
3928	DFA-ARRA-ENERGY	5,747,590	-
3147	DFA-BUDGET CONT FUND	1,369,242	-
3914	DFA-BUREAU BLDG DISC-SER 05	-	267
391V	DFA-CAP IMP-04 05 IHL SER 05A	743,775	19,669
3931	DFA-CAP IMP-AG REAPPR	17,986,017	-
3911	DFA-CAP IMP-CJC-SER 05	919,902	24,302
391F	DFA-CAP IMP-IHL AG 04-2003E	1,405,897	-
39AR	DFA-CAP IMP-IHL EMER-06 CP	-	348
39AG	DFA-CAP IMP-IHL&AGENCY-06 CP	-	279
3913	DFA-CAP IMP-IHL&AGENCY-SER 05	7,898	366
3910	DFA-CAP IMP-IHL/AGENCY-SER 05	38,361	19,620
391M	DFA-CAP IMP-IHL/AGY 2005A	991,498	20,430
39AH	DFA-CAP IMP-ST BLD&CJC-06 CP	96,551	7,582
3131	DFA-CAPITOL FAC RENT	5,047,342	99,626
3128	DFA-CAPITOL POLICE CONTRACTS	18,729	-
4001	DFA-CLEARING	27,740,245	-
3086	DFA-CRIMINAL JUSTICE	161,820	-
3996	DFA-DIASTER RECOVERY	15,019,139	258,420
39EA	DFA-EMER AID-LOCAL GOV'T	684,158	11,772
3930	DFA-FLOOD CLAIM STLMNT	1,606,618	-
3141	DFA-INSURANCE RECOVERY	365,801	-
3142	DFA-INTERNAL COST ALLOC	1,814,542	-
3146	DFA-KATRINA FEMA/MEMA	347,955	-
3148	DFA-LOCKHEED MARTIN MAINT	2,707,982	43,529
3144	DFA-MAGIC BD 11	4,733,833	-
3132	DFA-MASTER LEASE PURCHASE	41,054	-
3133	DFA-MEM STAD 09	22,954	2,756
3126	DFA-MS GOV PORTAL FEES	57,244	-
3145	DFA-MS IND BLIND REVOLVING	43,098	742
3125	DFA-MS MGT & REPORT SYS	2,880,330	52,008
3134	DFA-MVMS REVOLVING	57,281	-
3122	DFA-N ST PROP 09	780,509	12,301
3921	DFA-OFF OF BLDGS	22,418,620	-
39BJ	DFA-OFF OF BLDGS-2001 CAP IMP-01	4,771	782
3901	DFA-OFF OF BLDGS-CAP IMP	1,202,773	-
3081	DFA-PROPERTY INSURANCE	1,545,766	-
3084	DFA-PROSECUTOR COMP	1,185,955	-
4150	DFA-RESERVE	35,191	35,191
3994	DFA-RESTITUTION PAYMENTS	175	-
3642	DFA-SELF-INS WORKER COMP	24,484,183	845,757
39DP	DFA-SER07-04/05 IHL & ST AGCY CI	704,526	12,660
39DN	DFA-SER07-2003 IHL&ST AGCY CI	204,848	7,889
39DQ	DFA-SER07-2003 AYERS SETTLEMENT AG	-	2,395
39DL	DFA-SER07-2006 DPS IMPROVEMENTS	-	807
39DJ	DFA-SER07-2007 STATE AG CAP IMPR	871,557	21,586
39FE	DFA-SER07B-04/05 AYERS SETTLE CI	11,531,854	239,285
39FD	DFA-SER07B-04/05 CJC CI	820,891	41,686
39FC	DFA-SER07B-04/05 IHL&ST AG CI	12,695,401	254,218
39FH	DFA-SER07B-06 IHL EMERGENCY R&R	18,285	870
39FG	DFA-SER07B-06 ST BLDGS&CJC R&R	661,797	17,271
39FV	DFA-SER07B-07D WFP DISCRETIONARY	70,724	2,803
39FU	DFA-SER07B-07KEMPER COMM GR HOME	100,382	1,747
39FF	DFA-SER07B-2006 CI	69,777	21,963

STATE TREASURY
FUNDS INVESTED BY THE STATE TREASURY & INTEREST REVENUE
AS OF JUNE 30,2011

FUND	FUND NAME	FUND BALANCE	TOTAL EARNINGS
39FK	DFA-SER07B-2006 DPS IMPROV	-	1,181
39FS	DFA-SER07B-2007 BOB DISCRETIONAR	404,735	26,299
39FQ	DFA-SER07B-2007 CJC CI	2,250,008	62,825
39FP	DFA-SER07B-2007 GVILLE HIGH ED	143,423	2,535
39FM	DFA-SER07B-2007 IHL CI	10,143,256	295,944
39FN	DFA-SER07B-2007 IHL DISC	1,286,034	23,114
39FR	DFA-SER07B-2007 ST AGENCIES CI	12,612,565	260,688
39FT	DFA-SER07B-HINDS CC FFA BLDG	-	219
39FW	DFA-SER07C-04/05 IHL&ST AG CI	-	616
39FX	DFA-SER07C-2007 ST AGENCIES CI	439,548	23,685
39FZ	DFA-SER07C-NASA SHARES SERVICES	-	14,233
3995	DFA-SPEC FUNDS POOL LOAN	(69,600,000)	-
3149	DFA-STATE FISCAL RELIEF	255,587	-
3222	DFA-STATE SCHOOL EMP INS RES	133,165,162	2,759,493
3220	DFA-STATE SCHOOL EMP INSUR	88,022,175	504,071
3130	DFA-STATEWIDE ACCT SYSTEM	283,342	-
3143	DFA-STATEWIDE COST ALLOC	426,199	-
3907	DFA-SUBLEASE RENTS-REHAB	880,805	15,155
3138	DFA-SURPLUS PROPERTY FED	1,115,370	-
3136	DFA-SURPLUS PROPERTY STATE	228,961	2,902
3080	DFA-TORT CLAIMS	12,345,218	210,111
3644	DFA-UNEMPLOY INSURANCE	1,539,561	46,637
3120	DFA-WIND 10	1,029,431	-
3651	DHS-ADMINISTRATION	1,542,128	-
3659	DHS-AGING & ADULT SERV	92,414	-
3652	DHS-CHILD SUPP SPECIAL	9,183,141	-
3658	DHS-CHILDREN & YOUTH	155,777	-
3667	DHS-CHLD SUP TAX	462,630	-
3649	DHS-COMMUNITY SERVICES	898,734	-
3664	DHS-MS CHILDREN'S TRUST	492,327	8,863
3650	DHS-SOCIAL SERV BLOCK GRT	314,091	-
3653	DHS-SOCIAL SERV SPECIAL	3,805,912	-
3655	DHS-SUPPORT SERV SPECIAL	831,126	-
3662	DHS-YOUTH SERVICES	354,860	-
37AD	DPS-ADV GRANTS	315,419	1,642
310E	DPS-ALCOHOL & DRUG ABUSE	493,662	-
310W	DPS-ARRA VAWA	16,321	-
310R	DPS-ARRA-BYRNE	7,708,211	175,745
3741	DPS-CO JAIL OFF TRNG FD	105,980	-
3713	DPS-CRIME LAB	544,117	-
371E	DPS-CRIME LAB IMP CONSENT	119,851	-
371D	DPS-CRIME STOPPERS	226,113	-
371B	DPS-D.L. PHOTO FEES	500,241	-
371A	DPS-DISABILITY AND RELIEF	660,186	-
371N	DPS-DNA ID 11	168,706	-
3716	DPS-DRIVER SERVICES FEES	649,976	-
371C	DPS-DRIVER'S LICENSE SPEC FEES	1,106,265	-
3744	DPS-EMERG TELECOM	597,009	-
3109	DPS-FED ST ALCOHOL PROG	290,389	-
3102	DPS-FED ST PROGRAMS	756,382	-
371H	DPS-FINGERPRINT PROC FEE	492,579	-
371J	DPS-FIRST TRAFFIC VIOLATION	45,759	-
3710	DPS-FORFEITED FUNDS	564,616	-
3711	DPS-HIGHWAY PATROL	633,099	-
3712	DPS-HIGHWAY PATROL SAFETY	3,053	-
375A	DPS-HOMELAND SEC ADMIN	404,581	-
3757	DPS-HOMELAND SECURITY	15,535	-
374K	DPS-HURRICANE CRIMINAL JUSTICE	1,366	13
371M	DPS-INFO EXCH 09	529,956	7,361
310J	DPS-JUVENILE ACCOUNT	1,686,469	28,101
3749	DPS-JUVENILE FACILITY MONITORING	186,663	-
3742	DPS-LAW ENFORCE	642,646	-
3743	DPS-LAW ENFORCE OFF MON	110,041	1,642
3714	DPS-LAW ENFORCE TRNG ACAD	250,056	-
3746	DPS-LEADERSHIP COUN AGING	443,660	-

STATE TREASURY
FUNDS INVESTED BY THE STATE TREASURY & INTEREST REVENUE
AS OF JUNE 30,2011

FUND	FUND NAME	FUND BALANCE	TOTAL EARNINGS
3748	DPS-LOCAL CRIME STOPPERS	206,582	-
3101	DPS-LOCAL LAW ENFORCE	24,696	425
3740	DPS-MEDICAL EXAMINER	80,896	-
371G	DPS-OFFICE DEATH BEN TRUST	38,687	-
310G	DPS-OJP BYRNE JUS ASS 07	2,588,559	43,906
310H	DPS-OJP HURRICANE REL 07	234,771	20,467
310V	DPS-PLAN-ARRA VICTIMS	2,454	-
371F	DPS-POLYGRAPH EXAMINERS	12,683	-
3719	DPS-SALVAGE CERT OF TITLE	352,057	-
3715	DPS-SUPPORT SERVICES	342,098	-
371L	DPS-TROOP SCH 11	318	318
3717	DPS-WEAPONS PERMIT	296,116	-
3747	DPS-WIRELESS RAIDO COM	10,683,415	182,596
3372	EAST MS HOSP-SUPPORT	3,226,290	-
3373	ELLISVILLE ST SCH	2,487,951	-
3375	ELLISVILLE ST SCH-CLIENT TR	2,684,901	46,200
37HM	EMERG MGT HAZARD MIT ADMIN	2,499,774	-
37SS	EMERG MGT HURRICANE RESERVE	103,527,194	1,778,250
37PA	EMERG MGT PUBLIC ASSIT ADMIN	3,050,732	-
37RG	EMERG MGT REIMBURSABLE GRANTS	397,243	-
3721	EMERG MGT-ADMINISTRATIVE	301,092	6,553
3725	EMERG MGT-DISASTER ASSIST	2,619,186	51,088
3726	EMERG MGT-GRAND GULF	238,378	-
372U	EMERG MGT-HAZARD MIT	119,596	-
3727	EMERG MGT-HAZARD TRAN PER	120,305	-
3729	EMERG MGT-HURRICANE KATRINA	5,532,604	-
372K	EMERG MGT-KATRINA MATCH	11,762,213	-
3728	EMERG MGT-PUB ASSIST PROG	41,901	-
372B	EMERG MGT-PUBLIC ASSIST	1,768,755	30,434
3671	EMPLOY SEC COMM	2,102,656	-
3678	EMPLOY SEC COMM WKFRC TRAINING	477,731	37,749
3675	EMPLOY SEC COMM-ADMIN	2,174,786	-
3676	EMPLOY SEC COMM-BLDG&LAND	497,372	-
3094	ETHICS COMM BUD CONT	224	-
3430	FAIR COMM-COLISEUM	703,533	-
3435	FAIR COMM-DIXIE NATL LIVE	443,390	-
3432	FAIR COMM-RENOV & REPAIR	359,893	-
345A	FORESTRY COMM CAMDEN FOREST	58,308	-
3457	FORESTRY COMM-IMPROVE REV	155,770	-
345B	FORESTRY COMMISSION-FRDP 07	907,336	-
3458	FORESTRY COMM-KURTZ	273,808	4,861
3455	FORESTRY COMM-MISC	558,069	-
3459	FORESTRY COMM-TREE SEED	45,076	-
3456	FORESTRY COMM-VOLUNTEER FIRE EQ	25,998	321
3188	GAMING COMM-CHAR BINGO	504,288	-
3187	GAMING COMM-INVESTIGAT	3,264,328	-
3106	GOV OFF HEAD START	40,695	-
310M	GOV OFF HEALTHY MS	11,078	-
310N	GOV OFF-ARRA-B-BAND	-	129
3104	GOV OFF-BIOTERRORISM	87	-
3107	GOV OFF-BUDGET CONTINGENCY FUND	8,887	-
3105	GOV OFF-CENSUS 2000	785	-
3108	GOV OFF-GOV MANSION-CONTINGENCY	316,981	-
3472	GRAND GULF MILIT MON-SPEC	258,547	-
3386	HUDSPETH REGIONAL CENTER	509,908	-
325A	IHL - MVSU Ayers 10	682,542	-
326C	IHL-ALCOHOL SAFETY EDUC	92,427	-
4042	IHL-ALCORN AGRICULTURAL PROG	5	-
3261	IHL-ALCORN-MORRELL NELSON	1,085	-
3255	IHL-ASU-AYERS	186,015	-
3258	IHL-AYERS ENDOWMENT INT	88,903	-
3254	IHL-AYERS INTEREST-WCS	5,645,581	-
3262	IHL-COMM FOR VOLUNTEER SVC	72,677	1,216
3271	IHL-FIN AID HLTH CARE	190,433	-
3270	IHL-GEN SUP BUGT CONT	6	-

STATE TREASURY
FUNDS INVESTED BY THE STATE TREASURY & INTEREST REVENUE
AS OF JUNE 30,2011

FUND	FUND NAME	FUND BALANCE	TOTAL EARNINGS
4037	IHL-MSU-FORESTRY/WILDLIFE	4	-
4036	IHL-MSU-MS-AG & FORESTRY	2	-
4035	IHL-MSU-MS-COOP EXTENSION	2	-
3257	IHL-STATE COURT EDUCATION	2,051,232	-
4039	IHL-SYSTEM ADMINISTRATION	114,652	-
3286	IHL-UMC ACT CTR	43,085	22,757
3284	IHL-UMC-CHILD JUS 07	2,206,627	-
4030	IHL-UNIV ED ENHANCE	177,760	-
4038	IHL-UNIV MEDICAL CTR	3	-
4034	IHL-VETERINARY MED	4	-
3099	INDIGENT APPEALS ADMIN FUND	1,522,287	27,240
3454	INSTITUTE FOR FOREST INVEN	10,230	-
3782	INTERLIBRARY BOOKSHARING BOND	24,449	421
3002	JOINT LEG COMM-BCF OPERATIONS	140,873	-
3001	JOINT LEG COMM-CONT	2,362	-
3393	JUVENILE TRT FAC-SPECIAL	470,577	-
3249	LIBRARY COMM CAP IMP 2004	456,947	9,567
3250	LIBRARY COMM STAY CONNECT	32	153
3783	LIBRARY COMM-BUDGET CONT	946	-
3248	LIBRARY COMM-CAP IMP-2001	98,027	1,687
4109	LIBRARY COMM-ED ENHANCE	22,890	-
3245	LIBRARY COMM-FEDERAL	65,082	-
3246	LIBRARY COMM-MISCELLANEOUS	86,385	-
3449	MAR RES SER 06D DMR EQUIP FACILI	119,092	6,379
398U	MARINE RES-MARINE SINK	1,840,170	30,123
3984	MBA-SED 08 III F-H	218,979	-
3978	MBFC-SED FIN ACT 07-E-F	46,948	-
3979	MBFC-SED FIN ACT-07-A-D	33,052	-
34MH	MDA 10C DIP 11	2,983,492	-
34MT	MDA 10C ME/TC 11	6,196,458	-
34T7	MDA 10C TOY 6 11	4,615,852	-
34BP	MDA GC OIL SP 10	910,273	-
34AG	MDA HERIT HIS 11	646,148	8,642
34NM	MDA MEIA SEVER CORR	42,121	-
34FE	MDA SER 06E FARISH ST HIST	-	4,471
34EF	MDA SER 06E RURAL IMP ACT	681,413	20,011
34JG	MDA SER 06E SMALL MUNIC LIMIT PO	89,142	3,230
34PG	MDA-08B ACE	260,000	80,584
34KF	MDA-08B CI LOAN	10,493,967	182,399
34HC	MDA-08B EDH	-	49,754
34CC	MDA-08B EMERGING	-	858
34TF	MDA-08B JOB PROT	30,000	5,006
34AT	MDA-08B RR/BR	7,582	132
34GH	MDA-08B SHIPYARD	8,953,373	196,551
34JK	MDA-08B SM MUNIC	650,973	14,109
34TH	MDA-09B-EXIST IN	3,494,714	60,773
34FC	MDA-09B-FARISH	993,297	25,314
34TG	MDA-09B-JOB PROT	4,622,307	98,914
34MJ	MDA-09B-MBI-DIP	4,969,461	-
34AP	MDA-09B-RAILROAD	2,051,822	42,236
34EE	MDA-09B-RURAL	642,947	19,062
34HD	MDA-09D-ECO HWY	11,702,501	253,325
34CD	MDA-09D-EMERG CP	633,327	-
34ED	MDA-09D-RURAL	899,552	17,114
34PH	MDA-09E-ACE	13,835,370	241,515
34TB	MDA-09E-EXIST IN	7,544,051	-
34NV	MDA-09E-PACCAR	11,482,843	-
34JD	MDA-09G-SM MUNIC	2,373,801	63,481
34MI	MDA-10A DIP 10	884,549	-
34MY	MDA-10A MEIA SCH	50,000	-
34AE	MDA-10C INC 11	-	539,580
34PJ	MDA-10D ACE 11	2,486,243	23,919
34TJ	MDA-10D EX IN 11	7,939,887	76,379
34FD	MDA-10D FARIS 11	488,080	4,695
34AM	MDA-10D IND 11	14,968,646	447,518

STATE TREASURY
FUNDS INVESTED BY THE STATE TREASURY & INTEREST REVENUE
AS OF JUNE 30,2011

FUND	FUND NAME	FUND BALANCE	TOTAL EARNINGS
34AL	MDA-10D RR LI 11	983,035	9,457
34EG	MDA-10D RURAL 11	955,921	9,218
34AN	MDA-10D SM BU 11	4,477,486	47,196
34JL	MDA-10D SM MU 11	947,181	9,225
34AK	MDA-10D SU EN 11	497,249	4,784
34T8	MDA-10D TOY 7 11	29,080,953	10,235
34AJ	MDA-10D WK FRC 11	1,988,994	19,136
34HE	MDA-10F EC DV 11	80,595,894	31,469
341R	MDA-AGRIBUS REV LOAN	15,960,738	233,112
341U	MDA-ARRA-MDA	290,348	-
34KC	MDA-CAP IMP LOAN-SER 95C	-	309,195
341Y	MDA-CDBG ECON DEV REV	8,876,354	166,902
341W	MDA-CDBG KATRINA EMER	19,175,581	-
341X	MDA-COMM DEV-HUD/ARC	20,133	-
341Z	MDA-COMM DEV-NSP	41,284	-
341J	MDA-COMM HOUSING REV LOAN	561,350	-
34HB	MDA-ECON DEV HWY 08	-	250
3414	MDA-ECON DEV MATCH GRANTS	216,702	-
341C	MDA-ENERGY	5,034,741	87,100
34CR	MDA-ENERGY DEV LOANS	6,854,591	113,713
34TC	MDA-EXISITING IND SER A	2,893,247	50,371
34TD	MDA-EXIST IND 09	452,998	-
3420	MDA-FEDERAL & SPECIAL	8,471,053	-
3419	MDA-FIN RES ADM OPER	214,794	-
341V	MDA-HHS-EMPOWER ZONE	127,124	-
341H	MDA-HOUSING LOAN ADMIN FD	1,114,658	18,056
3412	MDA-HWY	669	5
341S	MDA-HWY LOCAL FUNDS	272,840	9,378
34KE	MDA-IHL CAP IMPR-95C	18,817,929	-
34AC	MDA-INFINITY 11	827,465	46,458
34TE	MDA-JOB PROTECT SER A	30	418
34WC	MDA-LAND,WTR,TMBR-REPAY	5,769,630	-
34WE	MDA-LAND,WTR,TMBR-SER D	2,460,163	43,353
34KA	MDA-LOC GOV CAP IMP 05 E	4,997,496	86,863
34KX	MDA-LOC GOV CAP-INT-95D	632,851	18,070
34KW	MDA-LOC GOV CAP-SER 95D	11,133,856	292,044
34RA	MDA-LOC GOV FR RAIL 2004	217,562	4,425
34RZ	MDA-LOC GOV FR RAIL REPAY	2,135,091	41,039
34RT	MDA-LOC GOV FR RAIL-2002	6,108,131	106,161
34CZ	MDA-MAJOR ENERGY PROJECT	192,396	-
34AU	MDA-MBI DEV INFRAST REV	2,413,723	41,533
341N	MDA-MBI INCUBAT REV LOAN	2,044,075	41,800
34MD	MDA-MBIA-DIP 08	394,152	-
34AH	MDA-MBI-LAKE MARY 10F	1,987,019	699
34AV	MDA-MBI-SER K-PORT REVIT	3,811,635	161,996
34MM	MDA-MBI-SER X-2001	618,471	-
398A	MDA-MBI-SINK-SER B	1,303,140	-
34NE	MDA-MEI SERIES J 2003	1,323,791	-
34NK	MDA-MEIA PHARM 2005L	14,349	-
34NB	MDA-MEIA-BAXTER SER 2007-A	14,096	245
34NT	MDA-MIA-NISSAN-SER 2003A	1,652,810	-
34AA	MDA-MILK PROD TRANSP 07	6,516	249
34AB	MDA-MILK PRODUCERS TRANS 08	2,927	25,000
34NW	MDA-MINERAL LEASE 2004	90,046	-
34NX	MDA-MMEIA PACCAR 09	4,378,268	-
34NU	MDA-MMEIA SER 2003	383,470	-
34NH	MDA-MMEIA VIKING SER L	8,835	-
34TT	MDA-MMEIA-07 TAX INCEN	3,738,145	54,103
34ND	MDA-MMEIA-COOP 09	19,654	-
34NJ	MDA-MMEIA-IMS 09	25,000	-
34CP	MDA-MS FARM REF-SER H	2,675,314	46,034
34NF	MDA-MS MAJ EC IMP-SER 2003	14,902	-
34NA	MDA-MS MAJ EC IMP-SER 97H	7,627	133
34CN	MDA-MS MAJ EC IMP-SER F	2,625,335	-
3413	MDA-PORT AUTHORITY	124,714	2,558

STATE TREASURY
FUNDS INVESTED BY THE STATE TREASURY & INTEREST REVENUE
AS OF JUNE 30,2011

FUND	FUND NAME	FUND BALANCE	TOTAL EARNINGS
3418	MDA-PROCUREMENT CTRS	28,152	-
34EA	MDA-RURAL IMPACT ACT 2003	524,852	9,358
34EC	MDA-RURAL IMPACT SER 05	19,113	1,704
34TA	MDA-SALES TAX INCENTIVE	1,618,595	29,318
34T6	MDA-SER 09E-TOYO	2,968,277	-
341K	MDA-SINGLE FAM RES LOAN	3,818,210	66,367
341G	MDA-SINGLE FAM RES LOAN REPAY	69,007	-
3415	MDA-SM BUS LOAN-KATRINA	8,218	-
34JC	MDA-SM MUNI LMTPOP 03 SER C	-	3,975
34JF	MDA-SM MUNI LMTPOP SER 05 E	-	8,953
34JA	MDA-SM MUNI, LMT POP CO	-	1,842
34JH	MDA-SMALL MUNIC & LIM POP 08	264,227	6,909
34TZ	MDA-TECH ALLIANCE ADMIN-08	753,398	15,174
34AF	MDA-TOUR ST 11	157,088	967
3410	MDA-TOURISM MATCH GRANTS	495,455	-
3324	MEDICAID-BUDGET&CONTINGENCY	160,766,480	-
3325	MEDICAID-CIVIL PENALTY FUND	8,658,537	-
3328	MEDICAID-DIV OF GEN SERV	20,624,135	-
3327	MEDICAID-MED CARE DONAT	24,797,427	346,766
3323	MEDICAID-REFUND ACCOUNT	9,220,486	64,701
3322	MEDICAID-TRANS DIAL 09	182,535	-
37AH	MEMA-ALT HOUSING PILOT PROG	8,140,300	76,874
3707	MILITARY DEPT FAMILY RELIEF	306,497	4,968
3704	MILITARY DEPT NGA MONTI 11	3,894,214	-
3702	MILITARY DEPT-A F MUSEUM 08	541	-
3709	MILITARY DEPT-ANG TRNG	903,380	-
3703	MILITARY DEPT-ARMORY SPEC	1,012,371	-
3706	MILITARY DEPT-MSNG SPRC DES	736,222	-
3701	MILITARY DEPT-NATL GD FED	8,042,296	-
3700	MILITARY DEPT-NATL GD TMBER	730,962	15,919
3705	MILITARY DEPT-YCP	2,704,540	-
3839	MOTOR VEHICLE COMMISSION	476,026	-
307A	MS ATTORNEYGEN-DOMVIOL COURT FOR	2,755	52
3720	MS BUR OF NARC-DRUG EVID 11	41,625	272
3964	MS BUS FIN CORP-CER DEV FEES	1,475,729	25,391
3963	MS BUS FIN CORP-CER DEV LOAN	473,421	8,146
3974	MS BUS FIN CORP-SED 08 A-D	245,854	-
3965	MS BUS FIN CORP-SED REPAY	1	-
3277	MS COMM VOLUNTEER SVC SPECIAL	12,768	-
3547	MS DEPT OF CORR-VICTIM IN07	1,055,363	10,287
396P	MS HOME CORP-AFF HSNP PRIN	1,027,231	-
3960	MS HOME CORP-AFF HSNP REPAY	788,254	-
3500	MS INS DEPT-WINDSTORM	11,484	174,731
3489	MS RIVER PKWY COMM-SPECIAL	3,649	-
3398	MS STATE HOSP BROOKHAVEN	182,446	-
337A	MS STATE HOSP-GC-CC 08	322,856	-
3374	MS STATE HOSPITAL-INMATE	17,192,256	-
3063	MS SUPREME COURT-TRIAL JUD 09	1,421,471	-
3364	NORTH MS HOSP-HLTHCARE EXPE	1	-
3385	NORTH MS REGIONAL CENTER	3,664,882	-
3384	NORTH MS STATE HOSPITAL	1,307,206	-
3100	OFF OF INDIGENT APPEALS-PUB DEF	969,651	15,118
394Z	OFF ST AID RD CON 08A BRIDGE	720	12,811
3491	OIL & GAS BD	5,545,043	-
3493	OIL & GAS BD-EMERG PLUG	3,194,761	-
3028	PEER JOINT REAPPT	14,096	-
3972	PORT GULFPORT-BOND & INT	32,750	-
3935	PORT GULFPORT-OP RESERVE	254,379	4,379
3973	PORT GULFPORT-RESERVE	462,970	7,970
3531	PUB EMPLOY RET SYS-ADM	1,037,478	-
3533	PUB EMPLOY RET SYS-REPAIR	16,050	-
3811	PUB SERV COMM-MOTOR CARR	6,114,024	-
3813	PUB SERV COMM-PHONE SOLIC	156,141	-
3812	PUB SERV COMM-PUB UTIL	2,152,993	-
3814	PUBSERVCOM-KATRINA-SYSRES-ENTERGY	2,399	41

STATE TREASURY
FUNDS INVESTED BY THE STATE TREASURY & INTEREST REVENUE
AS OF JUNE 30,2011

FUND	FUND NAME	FUND BALANCE	TOTAL EARNINGS
3816	PUBSERVCOM-KATRINA-SYSRES-MPTX	4,743,601	110,557
3815	PUBSERVCOM-KATRINA-SYSRES-MPTX	2,304	40
3836	REAL ESTATE APPR LIC BD	231,758	-
3832	REAL ESTATE COMM	1,622,139	-
3830	REAL ESTATE COMM: HOME INSPEC	23,857	-
3119	SEC OF ST CNTY VOTE ASSIST	193,113	3,346
311E	SEC OF ST-ELEC SUPP II	829,393	921
311M	SEC OF ST-HELP MS VOTE 07	1,434,473	27,317
3115	SEC OF ST-HELP VOTE	3,136,112	72,673
3112	SEC OF ST-LAND RECORDS	885,205	-
3118	SEC OF ST-POINT CADET	1,515,089	-
311P	SEC OF ST-PRENEED	35,948	405
3113	SEC OF ST-PUB TR TIDELANDS	4,961,568	-
3110	SEC OF ST-PUB TRUST TIDELANDS	3,872,040	-
3116	SEC OF ST-PURCHASE DEER ISLAND	1,277,944	-
3114	SEC OF ST-SECURITY ENF	714,481	-
3111	SEC OF ST-SPECIAL	14,195,519	-
300V	SER 03E CIVIL WAR BATTLEFIELD	-	1,146
300B	SER 03E IHL & ST AG CL FUND	1,381,711	32,803
3486	SOIL & WTR CONS	675,088	-
3483	SOIL & WTR CONS-EDUC	111,391	-
3487	SOIL & WTR CONS-SER 90A	295,877	6,890
3488	SOIL & WTR CONS-SER 91A	100,204	1,724
3482	SOIL & WTR CONS-WATERSHED	-	4
3485	SOIL & WTR CONS-WILDFLOWER	1,975	-
3481	SOILD&WTR CONS-08A SOIL/WTR	217,153	7,088
3394	SOUTH MS HOSP-HLTHCARE TRUST	152,240	-
3387	SOUTH MS REGIONAL CENTER	1,740,464	-
339E	SOUTH MS ST HOSP-SMSHCC-08	24,631	-
3391	SOUTH MS STATE HOSPIT	1,527,335	-
394Y	ST AID ROAD 07 LOC SYS BRIDGE	162	2,878
394S	ST AID ROAD BRIDGE 11	5,044,138	-
394R	ST AID ROAD H SPRINGS09	511,858	8,835
3947	ST AID ROAD-ADM	1,243,345	-
394P	ST AID ROAD-BRIDG MDB 11	19,011,483	11,483
3948	ST AID ROAD-BRIDGE	15,449,175	161,370
3946	ST AID ROAD-CONSTR	54,615,057	409,916
394T	ST AID ROAD-MDA PROJECTS	331,233	-
394Q	ST AIDROAD-ST AID RD 11	1,324,501	-
3502	ST FIRE ACADEMY-FIRE SCH	2,954,121	-
3614	ST PERSONNEL BD	873,335	-
3611	ST PERSONNEL BD-TRAINING FD	710,795	-
3950	ST TREAS BOND COSTS	10,597	-
397A	ST TREAS CAPTENS NOTE	14,109	929
398T	ST TREAS-08A TAX EX BD SKG FD	695,076	12,942
398D	ST TREAS-10D BOND 11	340,614	2,862
398Y	ST TREAS-10E HWY 11	153,836	391,450
398E	ST TREAS-10F BOND 11	264,044	2,992
398Z	ST TREAS-10F ECON 11	820,886	789,417
3179	ST TREAS-ABAND PROP CLAIM	149,787	-
3178	ST TREAS-ABAND PROP FUNDS	33,953,313	-
3177	ST TREAS-BUDGET CONTG	42,209,549	-
399C	ST TREAS-CAP EXP 10	26,522,660	-
396L	ST TREAS-CAP IMP PROV-SER 2001	1,697	596
396Z	ST TREAS-CAP IMP SER 2003E	936,481	9,036
396J	ST TREAS-CAP IMP-PREM & INT-05	2,993,195	1,727
396G	ST TREAS-CAP IMP-PREM & INT-99	45,884	871
396H	ST TREAS-CAP IMP-SER 2000	856,934	12,298
396U	ST TREAS-CAP IMP-SER 2002	826	826
9171	ST TREAS-CLEARING FUND	130,001,867	-
396V	ST TREAS-DEER ISLAND-SINKING	5,445	22,651
3760	ST TREAS-DEPOSIT GEN FUND	1,012,687	-
3172	ST TREAS-DUE SHAREHOLDER	127,797	-
3219	ST TREAS-EDUC IMPR TRUST	46,000,125	1,869,806
397E	ST TREAS-EMER CROP SINK-SER D	13,534	13,534

STATE TREASURY
FUNDS INVESTED BY THE STATE TREASURY & INTEREST REVENUE
AS OF JUNE 30,2011

FUND	FUND NAME	FUND BALANCE	TOTAL EARNINGS
398H	ST TREAS-EMI SYSTEM RESTOR SINKING	4,128,613	104,255
3176	ST TREAS-ESCHEATMENT	490,947	-
398L	ST TREAS-EXIST IND 07 SKG	5,940,208	341,413
396Y	ST TREAS-FARISH ST SINK FD	41,327	-
397W	ST TREAS-GAMING CO SINK	58,034,809	-
3951	ST TREAS-GF BOND & INT	12,723,334	-
3952	ST TREAS-GO BOND CALL FD	27,275,116	613,628
3853	ST TREAS-INC TX LIAB ESCR	370	-
398K	ST TREAS-JOB PROT 07 SKG	179,875	2,784
3989	ST TREAS-LTH CARE EXP FD	19,503,759	506,548
3184	ST TREAS-MACS	115,911,626	3,236,297
3183	ST TREAS-MACS ADM	33,514	1,104
3185	ST TREAS-MACS ENDOW	1,000	-
396F	ST TREAS-MAJ EC IMP SINK-I	26,657,489	1,183,306
396B	ST TREAS-MAJ ENERGY PROJ SINK	58,455	3,343
397R	ST TREAS-MBI SINK-SER	7,030,072	342,493
398X	ST TREAS-MBI SINK-SER I	424,565	-
397L	ST TREAS-MBI SINK-SER L	692,323	-
397N	ST TREAS-MBI SINK-SER M	133,755	-
398V	ST TREAS-MDB LOAN 11	-	5,455
3171	ST TREAS-MPACT ADM	133,645	-
3170	ST TREAS-MPACT TRUST	231,513,223	17,806,044
398G	ST TREAS-MPCOSYSTEM RESTOR SINKING	9,833,798	253,924
397V	ST TREAS-MS EC IMP SINK-F	1,303,153	68,714
3786	ST TREAS-NATL FOREST RES	196,740	-
3174	ST TREAS-OIL OVERCHARGE	877,585	15,101
3771	ST TREAS-SALES/UTILITY TAX	1,808	-
398F	ST TREAS-SED SINK	238,088	10,159
398M	ST TREAS-SER07B TAX EXEMPT BD FD	364,370	19,488
398N	ST TREAS-SER07C TAXABLE BD	861,403	2,372
3991	ST TREAS-ST LAND ACQUIST	210,743	-
396A	ST TREAS-TAX EXEMPT NOTE 2005A	20,303	3,886
398R	ST TREAS-TELECOM OCC TXRES-08	1,851,094	32,250
3763	ST TREAS-TIMB SEV TAX CNTY	2,308	-
3990	ST TREAS-TOBACCO LIT STTLMT	128,050,011	22,030,829
3189	ST TREAS-UNCLAIMED ESCHEAT	27,917	-
3780	ST TREAS-UNIV SPECIAL TAG	18,840	-
3992	ST TREAS-WORK CASH STAB	192,396,723	921,952
398P	STTREAS-CTYVOTINGSYSASSISBDSKGF	84,253	5,205
3061	SUPREME CT ELECTRONIC SYS	3,604,460	61,916
3053	SUPREME CT-ADM OFFICE	438,497	-
3058	SUPREME CT-ADMIN-SPEC	372,607	-
3057	SUPREME CT-APPEALS CT-SPEC	108,251	-
3056	SUPREME CT-BAR ADMISSIONS	156,795	2,363
3059	SUPREME CT-CIVIL LEGAL ASST	171,493	3,106
3052	SUPREME CT-CONT LEGAL ED	242,021	4,367
3055	SUPREME CT-COURT REPORTER	93,006	-
3060	SUPREME CT-DRUG COURT FUND	7,283,116	142,888
3066	SUPREME CT-JU SYS OP 11	22,142	110
3051	SUPREME CT-SPECIAL	108,614	-
3054	SUPREME CT-TRIAL JUDGES	400,109	-
3062	SUPREME CT-YTH COURT 08	380,150	5,477
3777	TAX COMM EX IND WH10	573,605	-
3778	TAX COMM MMEIA REB 11	222,596	-
9895	TAX COMM-ABC CLEARING	4,115,027	-
3895	TAX COMM-ABC REVOLVING	11,111,708	-
3856	TAX COMM-APPORTION TAG	303	-
3768	TAX COMM-CRUISE VSL FEES	65,836	-
3897	TAX COMM-FINGERPRINT	46,885	-
3851	TAX COMM-INC TX REFUND	9,718,282	-
3767	TAX COMM-INTER FUEL TAX	22,885	-
3852	TAX COMM-ITS MODRN 10	12,824,025	154,103
3854	TAX COMM-JOB INCENTIVE	14,490,213	-
3805	TAX COMM-LIC TAG 10	824,753	14,514
3873	TAX COMM-MIN DOCUM STAMP	10,845	-

STATE TREASURY
FUNDS INVESTED BY THE STATE TREASURY & INTEREST REVENUE
AS OF JUNE 30,2011

FUND	FUND NAME	FUND BALANCE	TOTAL EARNINGS
3769	TAX COMM-MOTOR VEH AD VAL	59,134,572	728,938
3770	TAX COMM-MOTOR VEH RENT	169	-
3896	TAX COMM-PERMIT CLEARING	10,332	-
3758	TAX COMM-PETRO MUNI AID	602,009	-
3181	TAX COMM-SALES TAX FEES	3,521,203	-
3186	TAX COMM-SEIZED PROP/CASH	3,581,563	-
3855	TAX COMM-SPECIAL REFUNDS	71,861	-
3180	TAX COMM-SPECIAL TAG-ADMIN	167,624	2,066
3774	TAX COMM-TELE AD VALOREM	3,095,265	107,800
3759	TAX COMM-TVA IN LIEU	13,039	-
397D	TREAS 2006 PREMIUM ACCRUED INT F	227,283	11,556
398J	TREAS-SER07-CI-VAR RATE	320,108	7,724
3731	VET AFFAIRS BD	117,066	-
3730	VET AFFAIRS BD-SPEC TAG	24,014	-
3732	VET AFFAIRS BD-VET HOME	7,805,356	-
3734	VET HOME PUR BD	20,753,127	270,749
3735	VET HOME PUR BD-ESCROW	1,673,255	31,750
3861	VET MEM STAD COMM	170	-
3737	VET MONUMENT COMM-MED HNR	1,530	-
3733	VET MONUMENT COMM-TRUST	8	-
3521	WORK COMP COMM-ADM	8,741,948	110,048
3522	WORK COMP COMM-SECOND INJ	19,444	-
TOTAL SPECIAL FUNDS		3,682,025,441	78,574,927
TOTAL GENERAL AND SPECIAL FUNDS		3,834,746,742	97,037,014

◆ BOND INDEBTEDNESS ◆

**State of Mississippi
Schedule of Debt Service
Net Direct General Obligation Bonds**

Fiscal Year	Principal Payment	Interest Payment	Total Payment
2012	283,070,000	166,364,017	449,434,017
2013	240,785,000	171,969,846	412,754,846
2014	250,155,000	142,941,408	393,096,408
2015	258,525,000	131,219,391	389,744,391
2016	242,570,000	120,095,168	362,665,168
2017	250,640,000	108,615,813	359,255,813
2018	207,125,000	98,097,200	305,222,200
2019	188,580,000	89,087,477	277,667,477
2020	169,885,000	81,322,481	251,207,481
2021	157,360,000	74,284,361	231,644,361
2022	148,295,000	67,663,822	215,958,822
2023	141,525,000	61,422,419	202,947,419
2024	142,240,000	55,563,039	197,803,039
2025	134,260,000	49,947,933	184,207,933
2026	140,040,000	44,285,609	184,325,609
2027	122,505,000	38,855,507	161,360,507
2028	114,655,000	33,873,530	148,528,530
2029	91,695,000	29,480,359	121,175,359
2030	67,420,000	25,669,917	93,089,917
2031	70,655,000	21,808,193	92,463,193
2032	74,115,000	17,692,821	91,807,821
2033	77,640,000	13,394,576	91,034,576
2034	80,825,000	8,993,154	89,818,154
2035	83,745,000	4,486,151	88,231,151
2036	40,225,000	1,095,126	41,320,126
	3,778,535,000	1,658,229,319	5,436,764,319

State of Mississippi
Schedule of Debt Service
Self-Supporting General Obligation Bonds with Specific Revenue Pledges

Fiscal Year	Principal Payment	Interest Payment	Total Payment
2012	960,000	54,593	1,014,593
2013	995,000	18,656	1,013,656
	1,955,000	73,249	2,028,249

State of Mississippi
Schedule of Debt Service
Total General Obligations Bonds

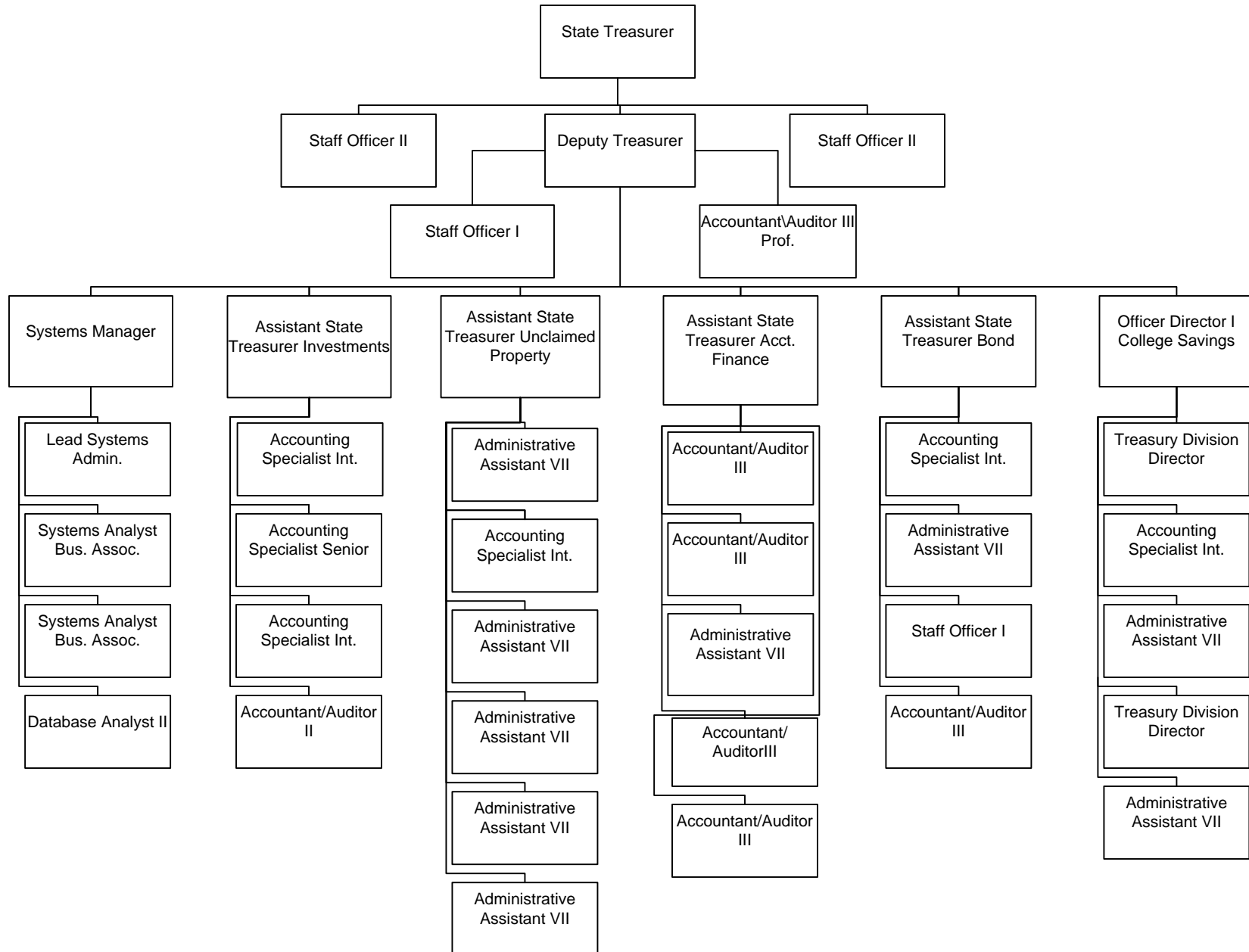
Fiscal Year	Principal Payment	Interest Payment	Total Payment
2012	284,030,000	166,418,609	450,448,609
2013	241,780,000	171,988,502	413,768,502
2014	250,155,000	142,941,408	393,096,408
2015	258,525,000	131,219,391	389,744,391
2016	242,570,000	120,095,168	362,665,168
2017	250,640,000	108,615,813	359,255,813
2018	207,125,000	98,097,200	305,222,200
2019	188,580,000	89,087,477	277,667,477
2020	169,885,000	81,322,481	251,207,481
2021	157,360,000	74,284,361	231,644,361
2022	148,295,000	67,663,822	215,958,822
2023	141,525,000	61,422,419	202,947,419
2024	142,240,000	55,563,039	197,803,039
2025	134,260,000	49,947,933	184,207,933
2026	140,040,000	44,285,609	184,325,609
2027	122,505,000	38,855,507	161,360,507
2028	114,655,000	33,873,530	148,528,530
2029	91,695,000	29,480,359	121,175,359
2030	67,420,000	25,669,917	93,089,917
2031	70,655,000	21,808,193	92,463,193
2032	74,115,000	17,692,821	91,807,821
2033	77,640,000	13,394,576	91,034,576
2034	80,825,000	8,993,154	89,818,154
2035	83,745,000	4,486,151	88,231,151
2036	40,225,000	1,095,126	41,320,126
	3,780,490,000	1,658,302,567	5,438,792,567

**State of Mississippi
Schedule of Debt Service
Total Bonded Indebtedness**

Fiscal Year	Principal Payment	Interest Payment	Total Payment
2012	284,030,000	166,418,609	450,448,609
2013	241,780,000	171,988,502	413,768,502
2014	250,155,000	142,941,408	393,096,408
2015	258,525,000	131,219,391	389,744,391
2016	242,570,000	120,095,168	362,665,168
2017	250,640,000	108,615,813	359,255,813
2018	207,125,000	98,097,200	305,222,200
2019	188,580,000	89,087,477	277,667,477
2020	169,885,000	81,322,481	251,207,481
2021	157,360,000	74,284,361	231,644,361
2022	148,295,000	67,663,822	215,958,822
2023	141,525,000	61,422,419	202,947,419
2024	142,240,000	55,563,039	197,803,039
2025	134,260,000	49,947,933	184,207,933
2026	140,040,000	44,285,609	184,325,609
2027	122,505,000	38,855,507	161,360,507
2028	114,655,000	33,873,530	148,528,530
2029	91,695,000	29,480,359	121,175,359
2030	67,420,000	25,669,917	93,089,917
2031	70,655,000	21,808,193	92,463,193
2032	74,115,000	17,692,821	91,807,821
2033	77,640,000	13,394,576	91,034,576
2034	80,825,000	8,993,154	89,818,154
2035	83,745,000	4,486,151	88,231,151
2036	40,225,000	1,095,126	41,320,126
	3,780,490,000	1,658,302,567	5,438,792,567



STATE TREASURY FY 2011 ORGANIZATIONAL CHART



NOTES TO THE ANNUAL REPORT OF THE TREASURER

-SIGNIFICANT ACCOUNTING POLICIES-

Significant accounting policies applicable to the State Treasurer are described below:

- A. Basis of Accounting** – The accompanying financial statements of the State Treasurer have been prepared on the cash basis of accounting for the reporting period July 1, 2010 through June 30, 2011. The Treasury’s policy is to record receipts when deposited with the Treasurer’s Office and disbursements when state warrants are presented to the Treasurer’s Office for redemption.
- B. Fund Accounting** – The financial activities of the state are recorded in individual funds that are used to observe the restrictions placed on resources and expenditures and to report the financial position of these funds. A fund is defined as an independent fiscal and accounting entity with a self-balancing set of accounts. Individual funds are segregated for the purpose of carrying on specific activities or attaining certain objectives in accordance with specific regulations, restrictions or statutory limitations.